



Namoi Region Air Quality Monitoring Network

As at 14 June 2018

CONTENTS

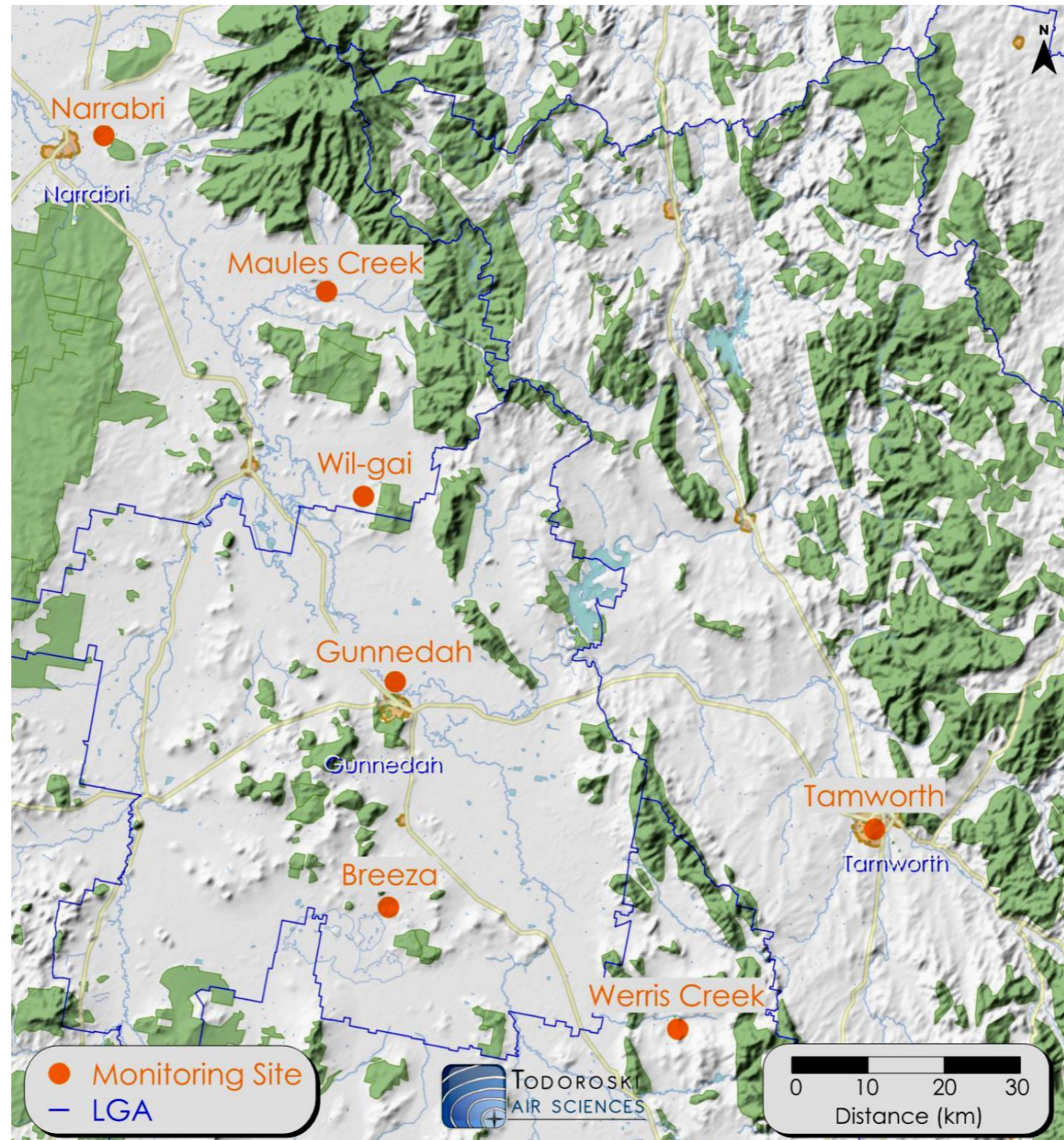
- Ministerial commitments
- Current monitoring locations
- Where to access data
- Next step

“The EPA and OEHL will commence air quality monitoring in Gunnedah and Narrabri by the end of this year. The EPA will work closely with the coal mining industry to establish the North West Air Quality Monitoring Network. This will integrate the existing industry monitors with the new OEHL stations in a comprehensive network, providing real-time air quality data to the people of the Namoi region.” Hon. Gabrielle Upton MP

AIR QUALITY SUMMIT – SYDNEY, 27 JUNE 2017

- ✓ OEH commissioned the Gunnedah and Narrabri Air Quality monitoring stations in December 2017
- ✓ Currently supplying near real-time data to the OEH website where it can be publicly viewed
- ✓ Four industry monitors supply weekly data which is published on the EPA website. In future, these monitors will be integrated with the OEH network

CURRENT MONITORING LOCATIONS



WHERE TO ACCESS DATA

NSW Office of Environment and Heritage is responsible for the operation and management of the Tamworth, Gunnedah and Narrabri stations. For data from these stations, go to:

<http://www.environment.nsw.gov.au/aqms/hourlydata.htm>

Industry currently operate the stations located at Maules Creek, Wil-gai, Breeza and Werris Creek, however, these stations will transition to OEHL. For data from the four industry stations, go to:

<https://www.epa.nsw.gov.au/your-environment/air/regional-air-quality/namoi-air-quality-monitoring-project>



NEXT STEP

The next step is the process of optimising industry monitoring sites to provide more meaningful information.

This presents one of many opportunities for the Namoi Region Air Quality Advisory Committee to add significant value to the process by helping shape and guide the development of the region's network into the future.