

# NSW local government waste and resource recovery data report as reported by councils

2009–2010

## **Disclaimer**

The Office of Environment and Heritage, Department of Premier and Cabinet has made all reasonable efforts to ensure that the contents of this document are factual and free of error. However the State of NSW and the Office of Environment and Heritage shall not be liable for any damage or loss which may occur in relation to any person taking action or not on the basis of this document.

## **Published by:**

Office of Environment and Heritage  
Department of Premier and Cabinet  
59–61 Goulburn Street

PO Box A290

Sydney South 1232

Ph: (02) 9995 5000 (switchboard)

Ph: 131 555 (environment information and publications requests)

Ph: 1300 361 967 (national parks information and publications requests)

Fax: (02) 9995 5999

TTY: (02) 9211 4723

Email: [info@environment.nsw.gov.au](mailto:info@environment.nsw.gov.au)

Website: [www.environment.nsw.gov.au](http://www.environment.nsw.gov.au)

OEH 2012/0064

ISBN 978 1 74293 327 6

Published February 2012

© Copyright State of NSW and the Office of Environment and Heritage,  
Department of Premier and Cabinet 2012

The Office of Environment and Heritage, Department of Premier and Cabinet and the State of NSW are pleased to allow this material to be reproduced in whole or in part, provided the meaning is unchanged and its source, publisher and authorship are acknowledged.

# Contents

Background	6
<b>1. Kerbside collection of recyclables</b>	7
1.1 Dry recyclables collection	7
1.2 Kerbside organics collection	13
<b>2. Kerbside residual waste collection for landfill or AWT</b>	18
<b>3. Kerbside Clean up/Hard waste collection</b>	24
<b>4. Drop off facilities provided by councils</b>	25
<b>5. Domestic Waste Resource Recovery rates</b>	26
<b>6. Domestic waste management charges</b>	32
Glossary	32

## List of figures

<b>Figure 1:</b> NSW councils providing kerbside dry recycling collection services	8
<b>Figure 2:</b> Average reported kerbside dry recyclables collected per household across local government areas	9
<b>Figure 3:</b> Average reported weekly kerbside dry recyclables collected, by collection system	10
<b>Figure 4:</b> Reported annual kerbside dry recyclables collected in NSW	11
<b>Figure 5:</b> Reported average kerbside dry recyclables collected per week in NSW	11
<b>Figure 6:</b> Reported annual and average weekly per capita collection of kerbside dry recyclables in NSW	12
<b>Figure 7:</b> NSW councils providing kerbside garden organics collection services	13
<b>Figure 8:</b> Average reported kerbside garden organics collected per household across local government areas	14
<b>Figure 9:</b> Average reported weekly kerbside garden organics collected, by collection system	15
<b>Figure 10:</b> Reported annual kerbside garden organics collected in NSW	16
<b>Figure 11:</b> Reported average kerbside garden organics collected per week in NSW	16
<b>Figure 12:</b> Reported annual and average weekly per capita collection of kerbside garden organics in NSW	17
<b>Figure 13:</b> NSW councils providing kerbside residual waste collection services	18
<b>Figure 14:</b> Average reported kerbside residual waste collected per household across local government areas	19
<b>Figure 15:</b> Average weekly quantity collected of household residual waste, by collection system	20
<b>Figure 16:</b> Reported annual kerbside residual waste collected in NSW	21
<b>Figure 17:</b> Reported average kerbside residual waste collected per week in NSW	21
<b>Figure 18:</b> Reported annual and average weekly per capita collection of kerbside residual waste in NSW	22
<b>Figure 19:</b> Domestic waste recovered by AWT by region	23

<b>Figure 20:</b> NSW councils with a kerbside clean up service	24
<b>Figure 21:</b> NSW councils providing a recycling drop off facility	25
<b>Figure 22:</b> Reported recovery materials by category	26
<b>Figure 23:</b> SMA recovery rate 2009–10	27
<b>Figure 24:</b> ERA recovery rate 2009–10	28
<b>Figure 25:</b> RRA recovery rate 2009–10	29
<b>Figure 26:</b> Rest of the state recovery rate 2009–10	30

## List of tables

<b>Table 1:</b> Total Domestic Resource Recovery Rates 2005–06 to 2009–10	5
<b>Table 2:</b> Annual NSW reported tonnages of recyclables collected at kerbside Tonnes (000's)	7
<b>Table 3:</b> Percentage coverage of household within council providing a dry recycling service in NSW	7
<b>Table 4:</b> Average reported annual quantity of kerbside dry recyclables collected by household and population	8
<b>Table 5:</b> Average reported annual quantity of kerbside dry recyclables collected, by collection system	9
<b>Table 6:</b> Percentage coverage of household and population with garden organics service in NSW	13
<b>Table 7:</b> Average reported annual quantity of kerbside garden organics collected by household and population	14
<b>Table 8:</b> Average reported annual quantity of kerbside garden organics collected, by collection system	15
<b>Table 9:</b> Percentage coverage of household and population with a residual waste service in NSW	18
<b>Table 10:</b> Average reported annual quantity of kerbside residual waste collected by household and population	19
<b>Table 11:</b> Average reported annual quantity of kerbside residual waste collected, by collection system	20
<b>Table 12:</b> Total domestic resource recovery rate trend	26

## Appendices

<b>Appendix 1:</b> Waste and Resource Recovery Services 2009–10	35
<b>Appendix 2:</b> Total domestic and kerbside resource recovery rate 2009–10	41
<b>Appendix 3:</b> Kerbside generation (household and population) 2009–10	49
<b>Appendix 4:</b> Predominant bin size and collection frequency 2009–10	55
<b>Appendix 5:</b> Domestic waste management charges 2009–10	61
<b>Appendix 6:</b> Total NSW and regional figures	66

# Executive summary 2009–2010

This is the fifth annual report outlining the performance of local government councils' kerbside and drop-off waste, recycling and resource recovery services in NSW based on information provided by Councils. The report amalgamated and relied entirely on the data reported by individual councils.

Reported kerbside collection of dry recyclables and household organics:

- There has been a progressive increase in the overall recycling performance from kerbside dry recyclables and garden organics from 644,021 tonnes in 2000–01 to 1.12 million tonnes in 2009–10
- An average 5.53 kg per week of dry recyclables were collected at the kerbside per household in 2009–10, for the 125 councils that reported dry recycling kerbside collections
- Total dry recyclables collected at the kerbside increased by 277,006 tonnes or 61.6% relative to 2000–01, to reach 726,432 tonnes in 2009–10
- An average 5.02 kg per week of household organics were collected at the kerbside per household in 2009–10, for the 60 councils that reported
- Total household organics collected at the kerbside increased by 202,794 tonnes or 104.2%, relative to 2000–01, to reach 397,390 tonnes in 2009–10.

Reported residual waste collections:

- An average 12.13 kg per week of residual waste was collected at the kerbside per household in 2009–10, for the 150 councils that reported
- Total residual waste collected at the kerbside increased by 352 tonnes relative to 2005–06, to reach 1,641,018 tonnes in 2009–10
- The amount of residual waste collected that was reported as recovered through an Alternative Waste Technology (AWT) treatment facility was 148,415 in 2009–10

Reported kerbside clean up:

- Total kerbside cleanup collection of waste, for the 93 councils that reported, was 136,600 tonnes in 2009–10, of which 27,572 tonnes were recycled

Drop off facilities:

- Total reported domestic waste dropped off, at the 121 councils that reported, was 532,511 tonnes in 2009–10, of which 237,208 was recycled

Household waste resource recovery rate:

- NSW total domestic recovery rate (Includes kerbside, clean up and drop off) has increased from 37.8% in 2005–06 to 45.1% in 2009–10

**Table 1: Total Domestic Resource Recovery Rates 2005–06 to 2009–10**

Recovery rate	2005–06	2006–07	2007–08	2008–09	2009–10
NSW	37.8%	40.8%	43.2%	43.7%	45.1%

## Background

This report amalgamated information provided by individual councils in response to an Office of Environment and Heritage (OEH) survey of all NSW local government councils to determine the characteristics of waste and resource recovery services available to residents of NSW for the year 2009–10. The survey incorporated the information required under the National Environment Protection Measure (NEPM) for Used Packaging Materials<sup>1</sup> in addition to information relating to domestic resource recovery as well as waste collection and disposal. Not all councils reported on all items in the survey.

This report should assist councils in making decisions and assessing progress against the goals and targets in the *NSW Waste Avoidance and Resource Recovery Strategy*<sup>2</sup>.

This report contains information as follows:

Population figures that were used for per capita calculations are derived from the Australian Bureau of Statistics (ABS) population estimates<sup>3</sup>. The population figures used are from, and refer to, population projections as at 30 June 2009. OEH used the figure from the start of the financial year as the ABS does not release the next year's figures until December.

***OEH acknowledges the cooperation and contribution of all NSW councils in providing the data presented within this report. Please note that the information within this report is entirely dependent on the accuracy of data supplied by councils in the 2009–10 survey. While OEH has made an effort to verify the information supplied by councils wherever possible, OEH is not able to validate the raw data that forms the basis of this report.***

---

1 For further information: [www.ephc.gov.au](http://www.ephc.gov.au)

2 For further information: [www.environment.nsw.gov.au](http://www.environment.nsw.gov.au)

3 ABS: Cat. No. 3218.0.55.001 Regional Population Growth, Australia – companion data



# 1. Kerbside collection of recyclables

Collection of kerbside dry recyclables and organics has progressively increased since the commencement of reporting, from 644,021 tonnes in 2000–01 to 1.12 million tonnes in 2009–10.

**Table 2: Annual NSW reported tonnages of recyclables collected at kerbside Tonnes (000's)**

	2000–01	2001–02	2002–03	2003–04	2004–05	2005–06	2006–07	2007–08	2008–09	2009–10
<b>Dry recyclables</b>	449.43	487.45	539.07	581.40	592.23	609.33	661.47	689.73	687.23	726.43
<b>Organics</b>	194.60	207.06	198.40	205.08	226.19	270.40	288.85	343.65	355.26	397.39
<b>Total kerbside</b>	644.03	694.51	737.47	786.48	818.42	879.73	950.33	1,033.38	1,042.49	1,123.82

## 1.1 Dry recyclables collection

One hundred and twenty six (126) of all NSW councils provided a kerbside dry recyclables collection service, reaching 96% of households within councils providing service and 93% of all households in NSW. Compared to the previous year, one council in RRA region and two councils in rest of the State extended dry recycling service to its residents. Service availability varied across NSW.

Most councils were able to obtain data from the facilities receiving and processing their dry recyclables. However, some councils may have only been able to provide an estimate of tonnes of recycled material and the quality of data may vary.

**Table 3: Percentage coverage of household within council providing a dry recycling service in NSW<sup>4</sup>**

Region	No. of councils providing service	Household		
		Total <sup>5</sup>	Coverage percentage % <sup>6</sup> (NSW/Region with service)	Coverage percentage % <sup>7</sup> (NSW/Region)
NSW	126	2,526,151	96.02%	93.48%
SMA <sup>8</sup>	38	1,437,585	98.07%	98.07%
ERA <sup>9</sup>	13	519,351	98.66%	98.66%
RRA <sup>10</sup>	20	288,271	94.55%	93.33%
Rest of the state	55	280,944	84.17%	70.02%

4 Refer Appendix 6 for total NSW and regional figures

5 Represents households within councils offering a kerbside recycling service

6 Coverage percentage of households within NSW/Region offering a service

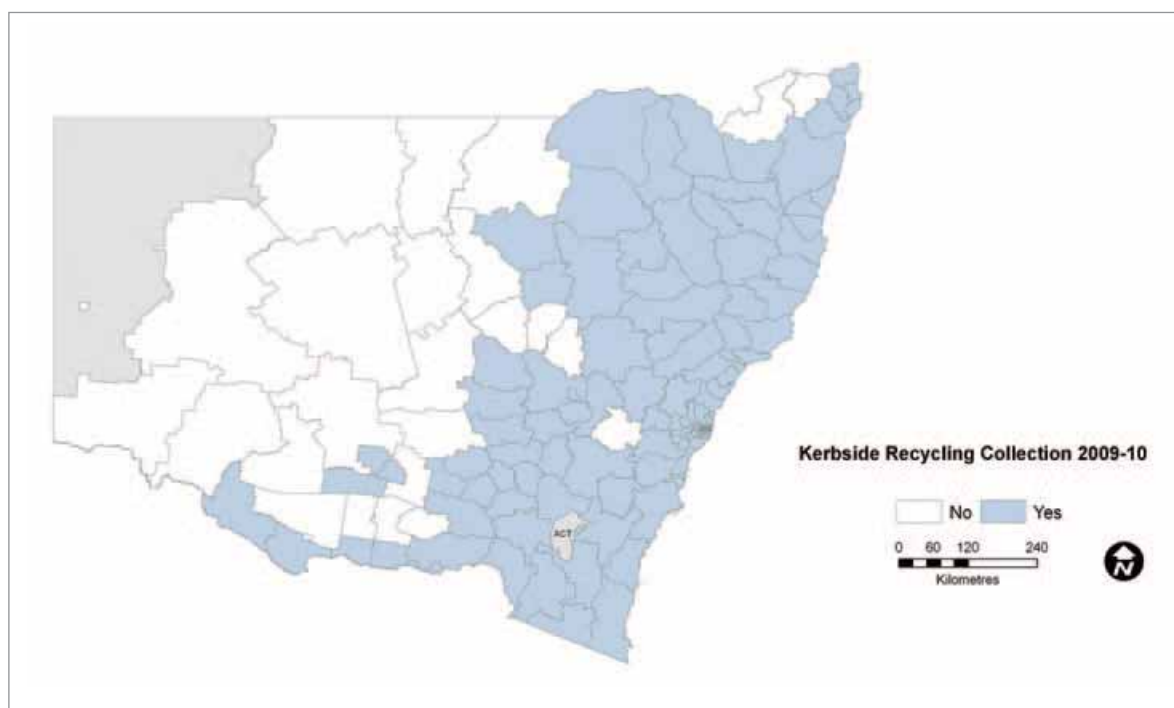
7 Coverage percentage of households within NSW/Region with an actual service

8 Sydney Metropolitan Area

9 Extended Regulated Area

10 Regional Regulated Area

**Figure 1: NSW councils providing kerbside dry recycling collection services**



An average of 288kg of dry recyclables was collected per household with a recycling service in 2009–10. This equates to an average of 5.53 kg per household or 2.01 kg per person, per week.

**Table 4: Average reported annual quantity of kerbside dry recyclables collected by household and population**

Region	No. of councils reporting	Household <sup>11</sup>		Population <sup>12</sup>	
		Annual kg/hh/yr	Weekly kg/hh/wk	Annual kg/ca/yr	Weekly kg/ca/wk
<b>NSW</b>	125 *	287.76	5.53	104.50	2.01
<b>SMA</b>	38	288.84	5.55	103.71	1.99
<b>ERA</b>	13	279.05	5.37	107.23	2.06
<b>RRA</b>	20	300.82	5.78	113.99	2.18
<b>Rest of the state</b>	54	284.93	5.48	95.82	1.84

\* Represents only those councils reporting the dry recycling collection figures

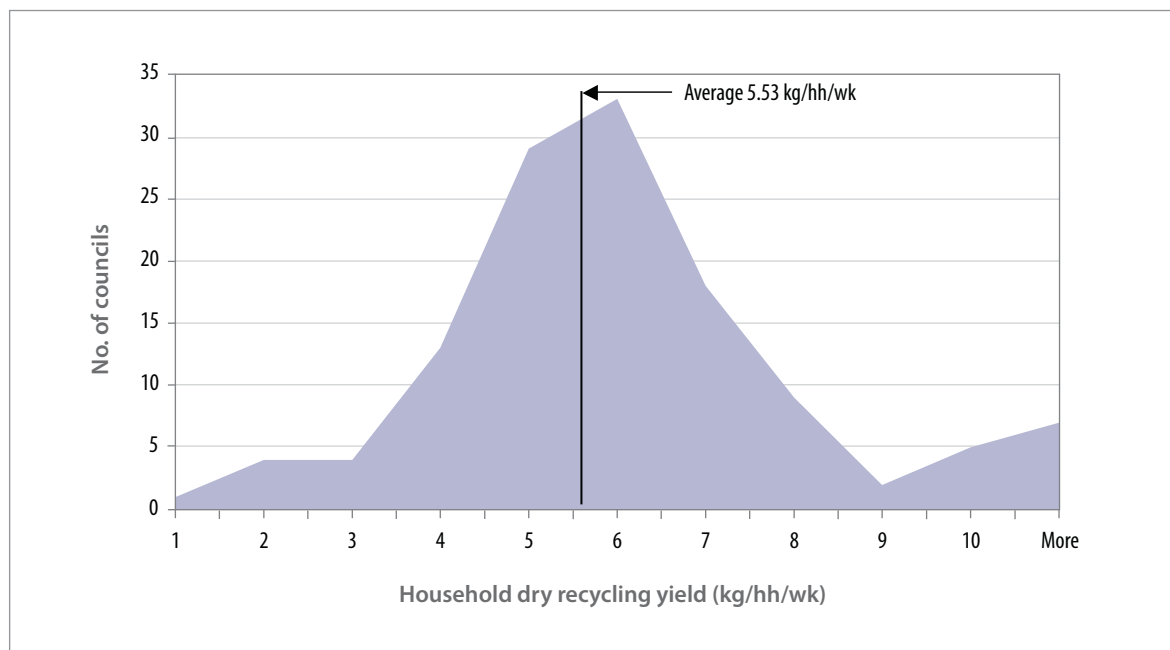
Annual average reported collection of dry recyclables increased by 10 kg/hh/yr compared to the previous year (278 kg/hh/yr, 2008–2009) and the average in RRA (300.82 kg/hh/yr) was higher than the state average for councils that report on the service. Of the 125 councils in NSW that provided a kerbside dry recyclable collection, 22 had collected less than 4 kg per household per week, and 41 councils exceeded 6 kg on average (Figure 2).

11 Based on total number of households within reporting councils

12 Based on total population within reporting councils



**Figure 2: Average reported kerbside dry recyclables collected per household across local government areas**



NSW councils used six different dry recycling collection systems in 2009–10 (Table 5). OEH preferred collection systems for dry recyclables (either 240L fully commingled MGB or dual 120L MGBs for paper and containers) was used by 101 councils in total. Standardised collection systems facilitate education, improve understanding and use of recycling systems by residents.

**Table 5: Average reported annual quantity of kerbside dry recyclables collected, by collection system<sup>13</sup>**

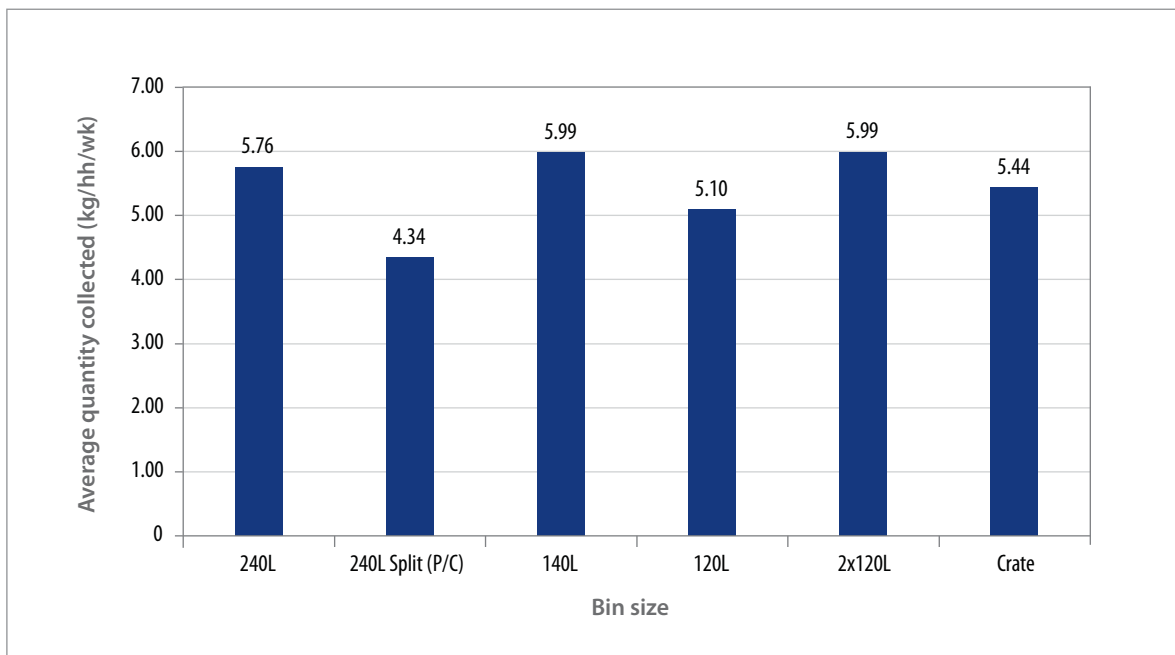
Collection system	SMA	ERA	RRA	Rest of the state	No. of councils	Household collections	
						kg/hh/yr	kg/hh/wk
240L MGB	30	10	17	40	97	299.32	5.76
240L MGB split (Paper/commingled)	–	3	2	1	6	225.82	4.34
140L MGB	3	–	1	–	4	311.40	5.99
120L MGB	–	–	–	2	2	265.12	5.10
2 x 120L MGB Dual Bins	4	–	–	–	4	311.52	5.99
Crate	1	–	–	9	10	319.69	5.44
Other *	–	–	–	2	2	213.79	4.11
No kerbside recycling collection service	–	–	1	25	26	–	–

\* Combination of Tied and Bundled + Crate+ MGBs, or mix of MGBs, or crates + MGBs

<sup>13</sup> The average annual figure is based on predominant bin size and larger proportion of dwelling types within councils. Also excludes non reporting councils for the period.

Figure 3 compares average weekly household dry recyclables collected by collection system type. One of the preferred collection systems (240L MGB) collected an average of 5.76 kg/hh/wk and was used by 77% (97 councils) of the councils with kerbside recycling service. The other preferred collection system (120L MGB dual bins) showed the highest average collection at 5.99 kg/hh/wk in 2009–10 with only four councils within SMA using the system type.

**Figure 3: Average reported weekly kerbside dry recyclables collected, by collection system**

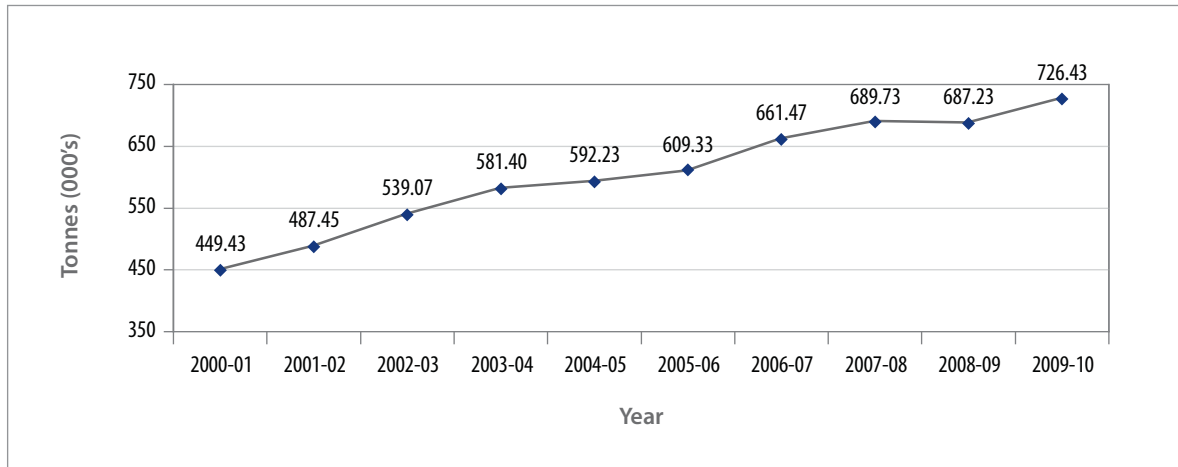


Kerbside collection of dry recyclables increased by over 39,197 tonnes or 5.70% in 2009–10 relative to 2008–09 period. The SMA and ERA reported kerbside collection increase of 3.6% and 4.8%, while the RRA and rest of the State reported 10.3% and 10.6% increment respectively compared to 2008–09.

Total dry recyclables collected at the kerbside in NSW in 2009–10 was 726,432 tonnes with 415,232 tonnes collected from the SMA; 144,924 tonnes from the ERA; 86,717 tonnes from the RRA and 79,559 tonnes from the rest of the State.

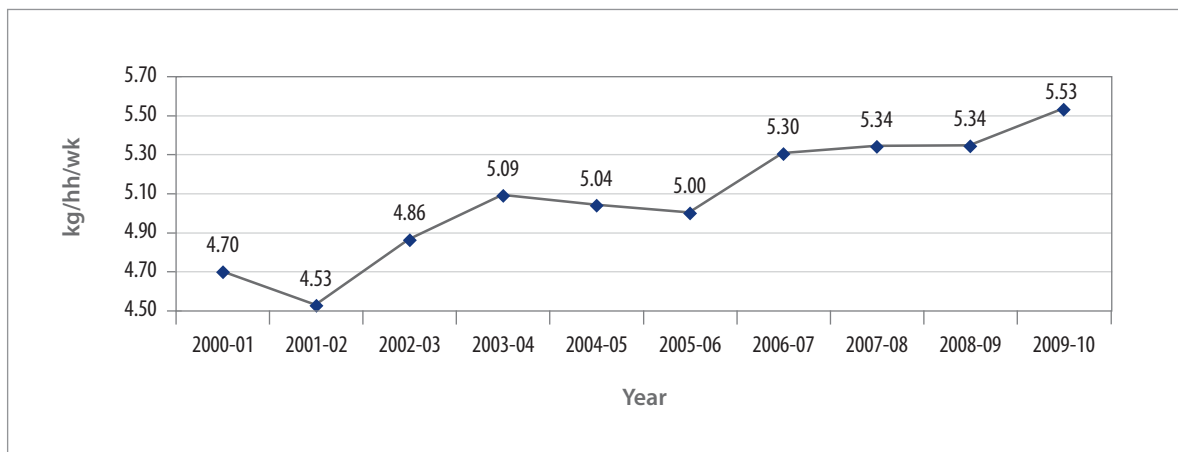
The increase in the quantity of dry recyclables in 2009–10, is 277,006 tonnes or 61.6% relative to 2000–01 collection figures.

**Figure 4: Reported annual kerbside dry recyclables collected in NSW**



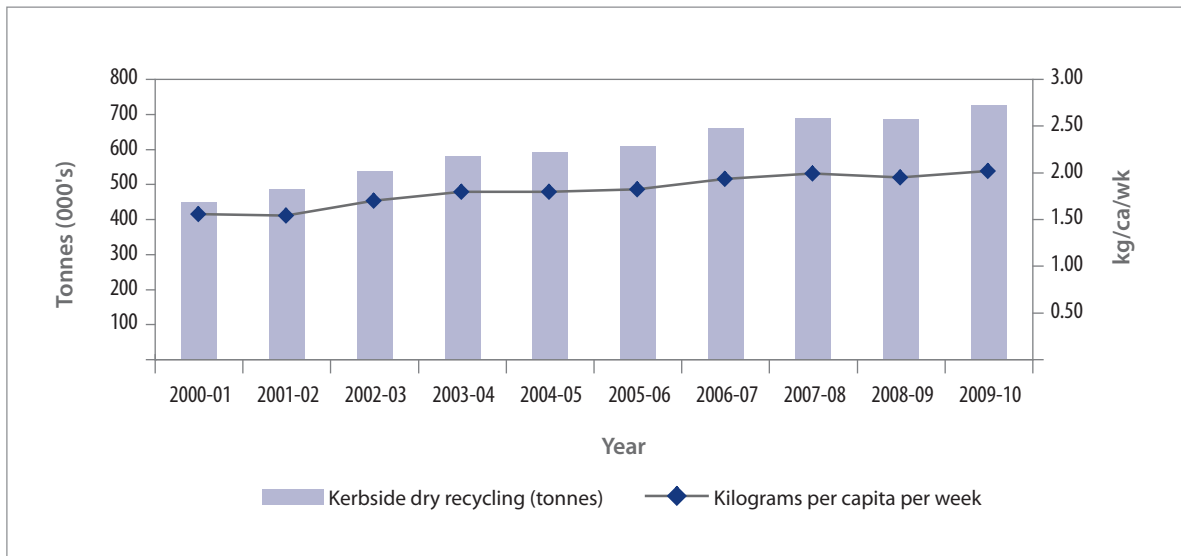
Average household recyclables collected per week increased from 4.70kg in 2001–02 to 5.53 kg in 2009–10 period.

**Figure 5: Reported average kerbside dry recyclables collected per week in NSW**



Similarly, the average per capita collection of dry recyclables increased in line with an overall increase in the quantity of dry recyclables collected in NSW (Figure 6). The increases may be due to both an increase in councils offering new or expanding recycling service and improved recycling behaviour by residents.

**Figure 6: Reported annual and average weekly per capita collection of kerbside dry recyclables in NSW**



### ***Environmental benefits of recovering dry recyclables***

Recycling results in the avoidance of environmental impacts associated with resource extraction, materials production and manufacturing processes. The environmental benefits of the community recycling 726,432 tonnes of dry recyclables in NSW during 2009–10 are demonstrated using the Environmental Benefits of Recycling Calculator<sup>14</sup>. The indicators used in the calculator are greenhouse benefits, energy and water savings, as well as landfill space saved. All benefits are net benefits, that is, they are the benefits after the average impacts of collection, transporting and reprocessing have been accounted for.

The recycling of 726,432 tonnes of resources also saves 2,001,867 m<sup>3</sup> of landfill space, 87,038 cars permanently removed from the road, 56,015 blocks of 10 household’s annual electricity requirements and 128,644 persons annual water usage.

<sup>14</sup> For further information: <http://www.environment.nsw.gov.au/warr/BenefitRecycling.htm>

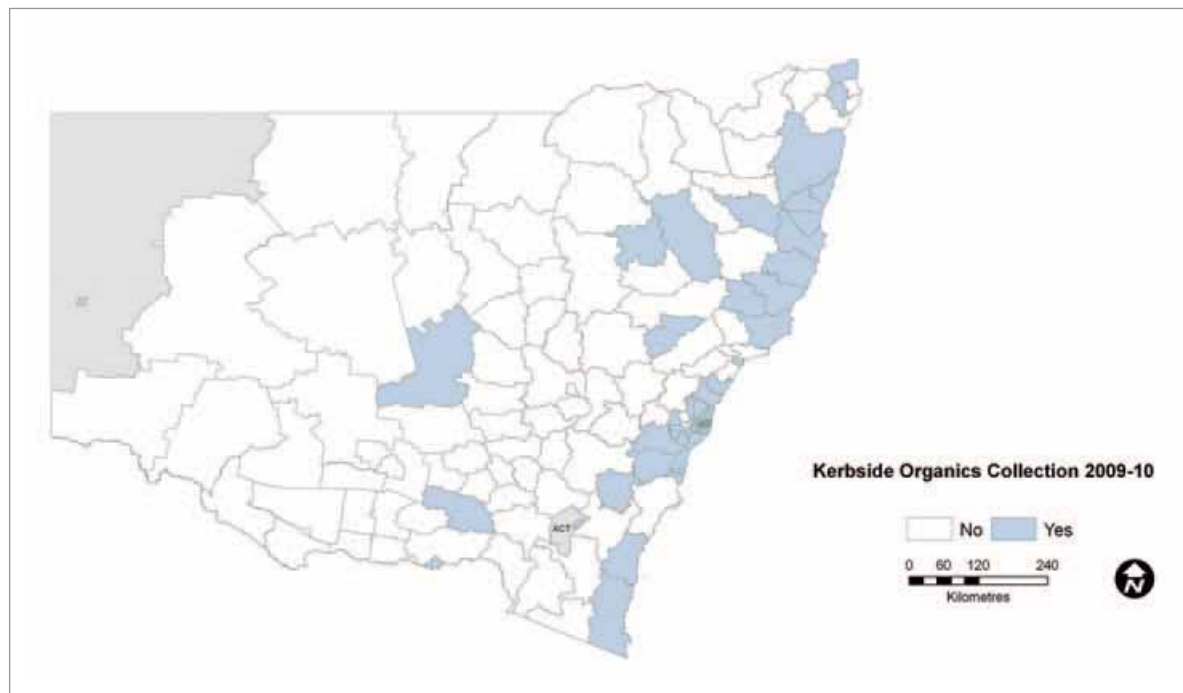
## 1.2 Kerbside organics collection

Sixty four NSW councils provided kerbside garden organics collections in 2009–10, reaching 85% of households within councils providing service and only 60% of all households in NSW (Table 6 and Figure 7). Some councils could only provide estimates of quantities recovered.

**Table 6: Percentage coverage of household and population with garden organics service in NSW**

Region	No. of councils providing service	Household		
		Total <sup>15</sup>	Coverage percentage % <sup>16</sup> (NSW/Region with service)	Coverage percentage % <sup>17</sup> (NSW/Region)
<b>NSW</b>	64	1,615,142	84.97%	59.77%
<b>SMA</b>	33	1,037,031	84.61%	70.75%
<b>ERA</b>	6	292,646	99.11%	55.59%
<b>RRA</b>	13	153,206	70.24%	49.60%
<b>Rest of the state</b>	12	132,259	81.68%	32.97%

**Figure 7: NSW councils providing kerbside garden organics collection services**



15 Represents households within those councils receiving kerbside garden organics service

16 Coverage percentage of households within NSW/Region offering a service

17 Coverage percentage of households within NSW/Region with an actual service

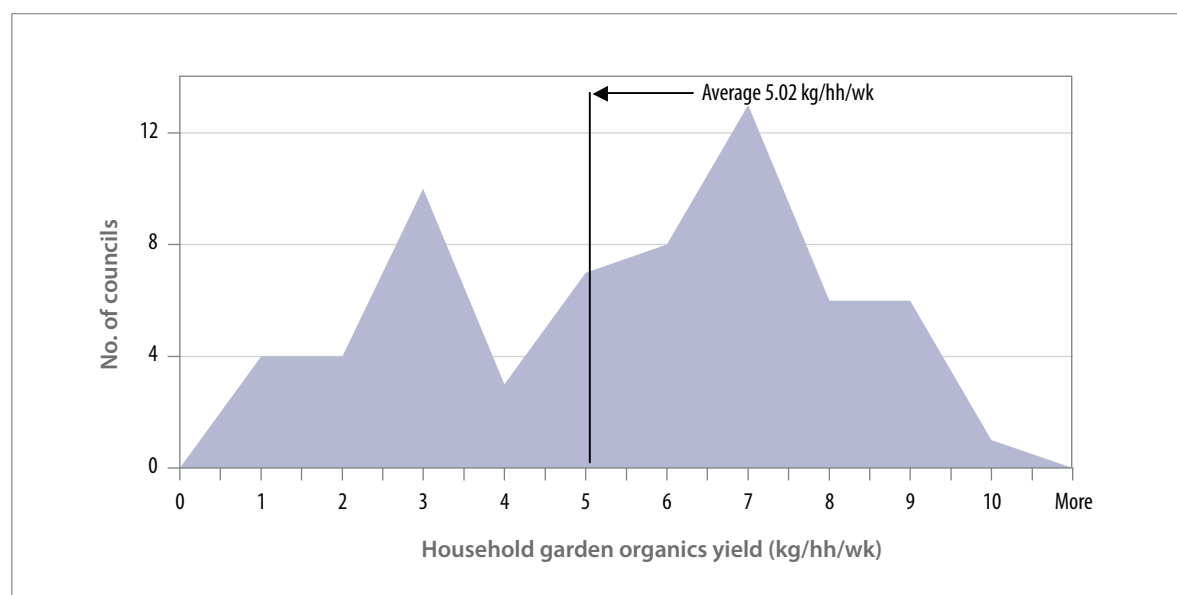
An average of 261 kg of garden organic material was collected per household in 2009–10 in those councils that provided and reported on that service. That equated to an average of 5.02 kg per household per week or 1.62 kg per person per week. Sixty (60) councils reported collection quantities.

**Table 7: Average reported annual quantity of kerbside garden organics collected by household and population \***

Region	No. of councils reporting	Household <sup>18</sup>		Population <sup>19</sup>	
		Annual kg/hh/yr	Weekly kg/hh/wk	Annual kg/ca/yr	Weekly kg/ca/wk
NSW	60 *	261.11	5.02	84.10	1.62
SMA	33	249.66	4.80	79.24	1.52
ERA	5	301.36	5.80	116.24	2.24
RRA	12	319.67	6.15	90.01	1.73
Rest of the state	10	196.87	3.79	62.61	1.20

\* Represents only those councils reporting garden organics collection figures.

**Figure 8: Average reported kerbside garden organics collected per household across local government areas**



In 2009–10, the most common garden organics collection system provided by councils was a 240L MGB with varied collection frequency. Of those, 41 councils collected fortnightly, 9 councils collected weekly and 5 councils collected monthly. The other common collection system was a combination of various systems-tied and bundled, crates, MGB's or mixture of these systems; collected fortnightly, on call or monthly.

The OEH preferred resource recovery practices by Local Councils Guide recommends a 240L MGB collected fortnightly for councils with high volumes of 175 kg or more per household per year.



**Table 8: Average reported annual quantity of kerbside garden organics collected, by collection system**

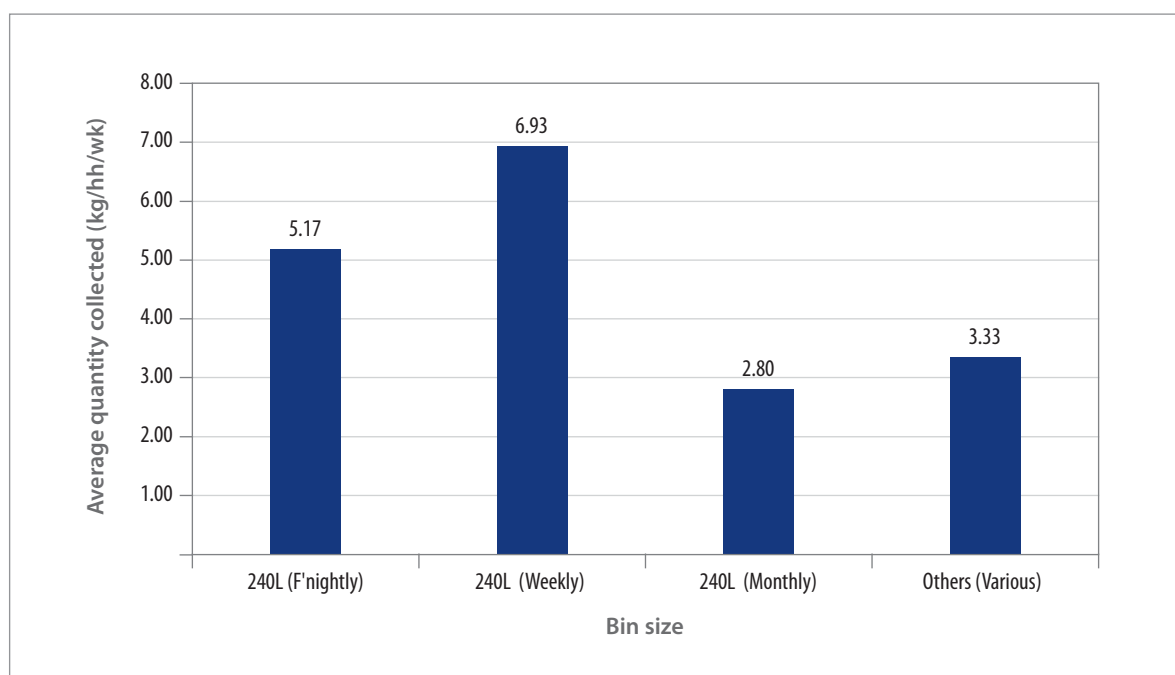
Collection system	SMA	ERA	RRA	Rest of the state	No. of councils	Household collections	
						kg/hh/yr	kg/hh/wk
240L MGB (Fortnightly)	22	5	7	7	41	268.97	5.17
240L MGB (Weekly)	4	–	5	–	9 **	360.51	6.93
240L MGB (Monthly)	2	–		3	5	145.66	2.80
Others (Various)*	5	–		–	5	173.40	3.33
No Service	5	7	8	68	88	–	–

\* Combination of Tied and Bundled + Crate+ MGBs, or mix of MGBs, or crates + MGBs. Frequency (Various).

\*\* The collected quantity from one council is also included in AWT figure.

Figure 9 below compares the average weekly quantity collected of household garden organics by collection system type. The 41 councils who used the fortnightly 240L MGB collection system were geographically spread across the SMA, ERA, RRA and the rest of the State and collectively serviced over 1.6 million households.

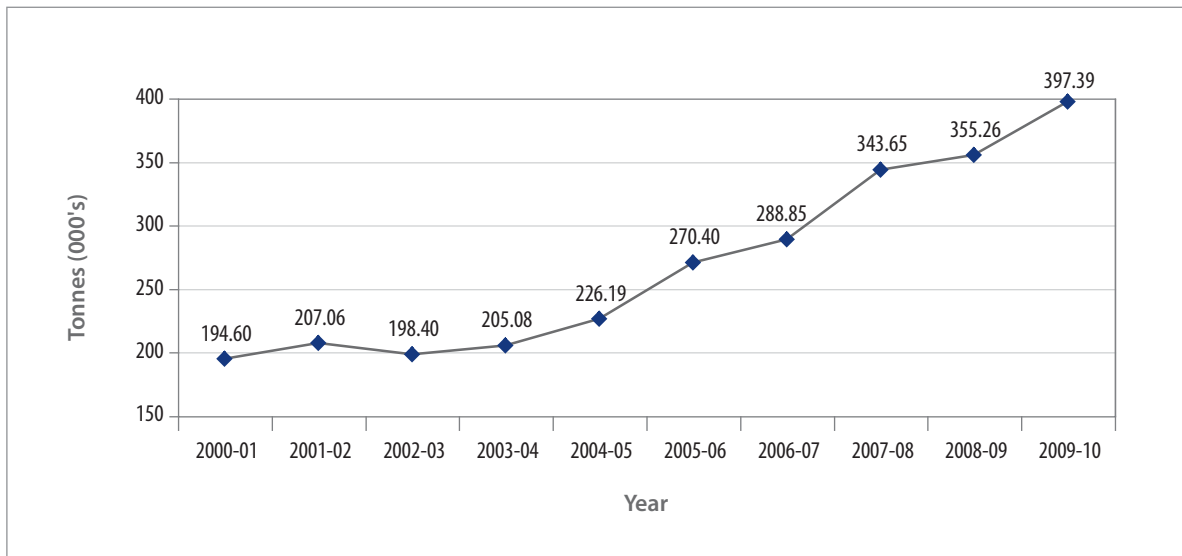
**Figure 9: Average reported weekly kerbside garden organics collected, by collection system**



Garden organics collected at the kerbside around NSW increased by 202,794 tonnes, or 104.21%, compared to 2000–01 data, to a total of 397,390 tonnes in 2009–10:

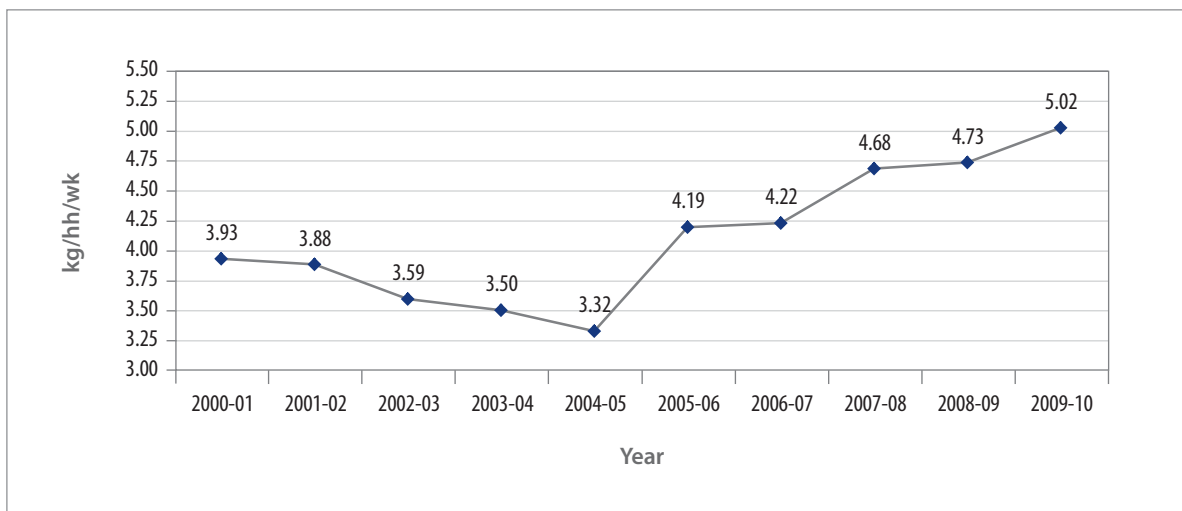
- 258,908 tonnes from the SMA
- 70,326 tonnes from the ERA
- 48,517 tonnes from the RRA
- 19,639 tonnes from the rest of the State.

**Figure 10: Reported annual kerbside garden organics collected in NSW**



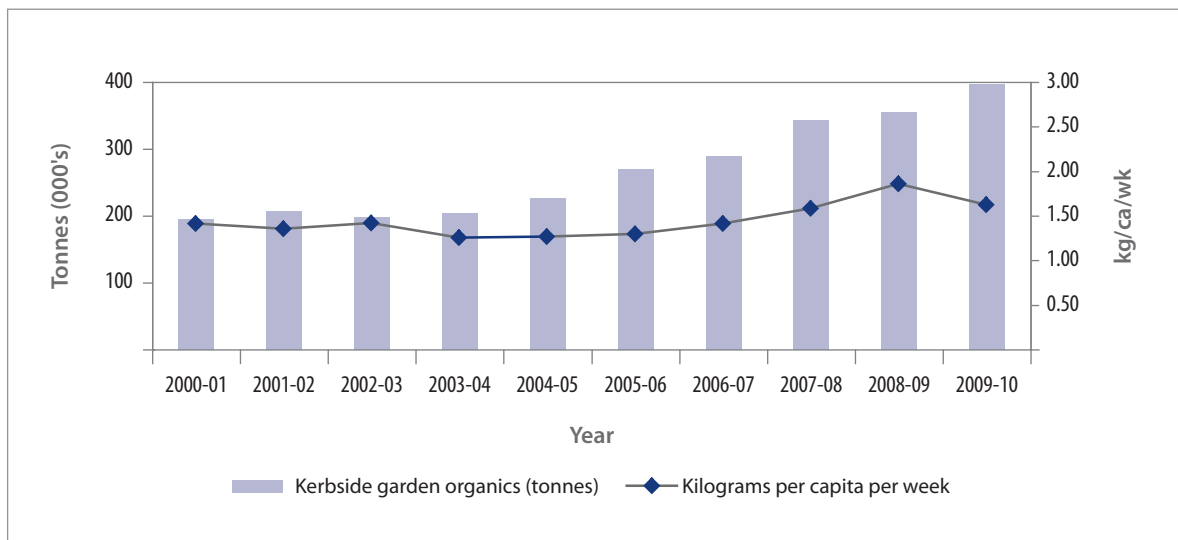
The average weekly collected quantity of household garden organics per household has increased since 2004–05 to an average 5.02 kg per household per week in 2009–10 (Figure 11).

**Figure 11: Reported average kerbside garden organics collected per week in NSW**



The overall increase in garden organics collected in NSW may be explained by the continued increase in the number of councils offering a kerbside garden organics collection service in recent years. The average weekly collected quantity of garden organics per capita has increased from 2004–05 to 1.62 kg in 2009–10 (Figure 12).

**Figure 12: Reported annual and average weekly per capita collection of kerbside garden organics in NSW**



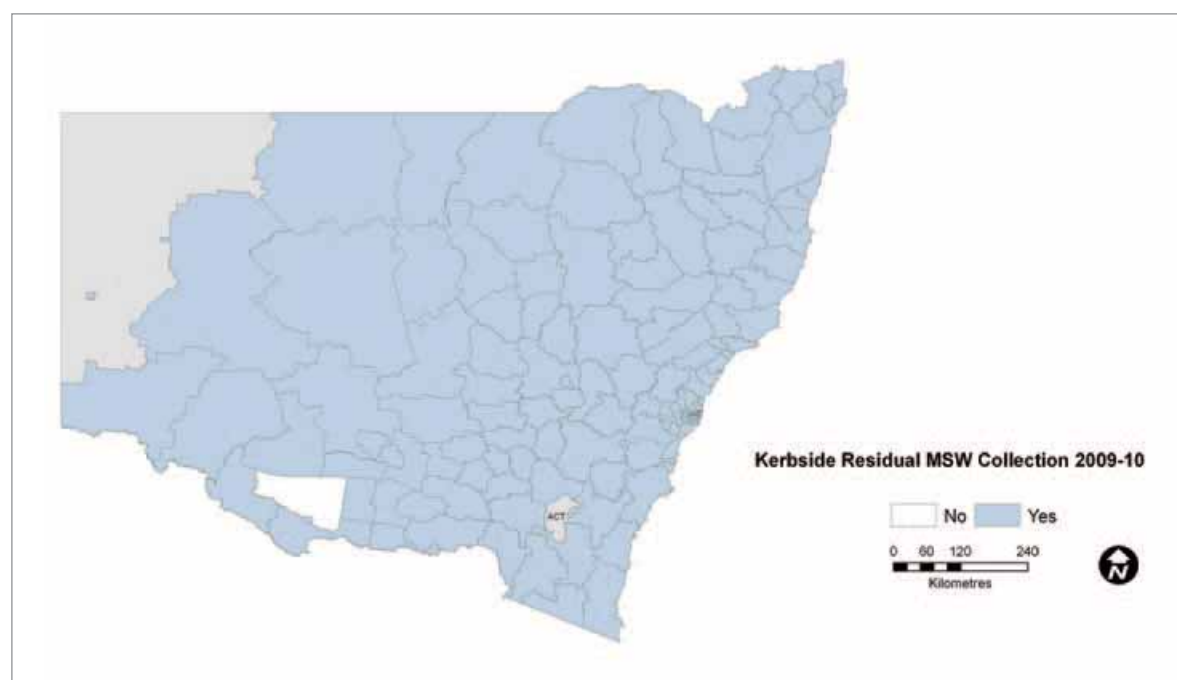
## 2. Kerbside residual waste collection for landfill or AWT

In 2009–10, 151 councils provided kerbside residual waste collection service, reaching 96% of households within councils providing service and 96% of all households in NSW. Access to collection varied across NSW; with 99% of households receiving collection services in the SMA and ERA, 94% of households in RRA and almost 86% in the rest of the State.

**Table 9: Percentage coverage of household and population with a residual waste service in NSW**

Region	No. of councils providing service	Household		
		Total <sup>21</sup>	Coverage percentage % <sup>22</sup> (NSW/Region with service)	Coverage percentage % <sup>23</sup> (NSW/Region)
<b>NSW</b>	151	2,602,230	96.32%	96.30%
<b>SMA</b>	38	1,449,473	98.89%	98.89%
<b>ERA</b>	13	518,677	98.53%	98.53%
<b>RRA</b>	21	290,829	94.16%	94.16%
<b>Rest of the state</b>	79	343,251	85.72%	85.55%

**Figure 13: NSW councils providing kerbside residual waste collection services**



21 Represents households within those councils offering a kerbside residual waste service

22 Coverage percentage of all households within NSW/Region offering a kerbside waste service

23 Coverage percentage of households within NSW/Region with an actual service

An average of 631 kg of residual waste was collected per household from the 150 councils in 2009–10 that provided data, averaging 12.13 kg per household per week and 4.43 kg per person per week.

**Table 10: Average reported annual quantity of kerbside residual waste collected by household and population**

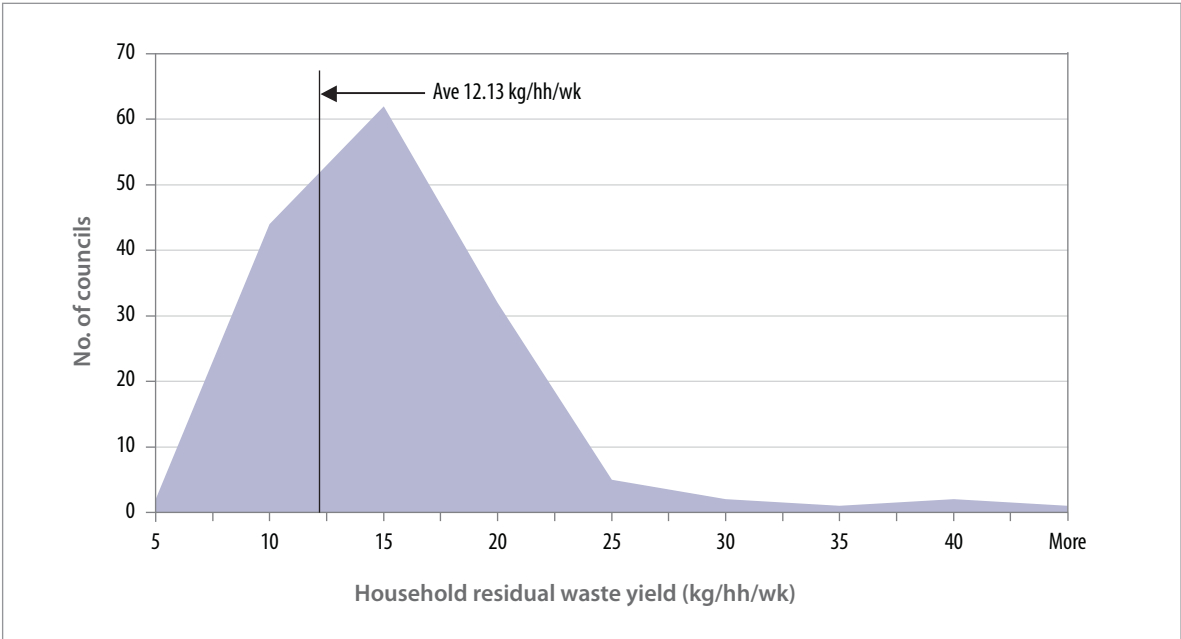
Region	No. of councils reporting	Household <sup>24</sup>		Population <sup>25</sup>	
		Annual kg/hh/yr	Weekly kg/hh/wk	Annual kg/ca/yr	Weekly kg/ca/wk
<b>NSW</b>	150 *	630.89	12.13	230.10	4.43
<b>SMA</b>	38	622.91	11.98	225.51	4.34
<b>ERA</b>	13	653.80	12.57	250.91	4.83
<b>RRA</b>	21	597.79	11.50	224.12	4.31
<b>Rest of the State</b>	100	658.11	12.66	225.04	4.33

\* Represents reporting councils only.

Quantity range of residual waste collected per household per week by the councils is categorised as:

- Between 10 and 15 kg – 62 councils
- Between 5 and 10 kg – 44 councils
- More than 15 kg – 43 councils
- Less than 5 kg – 2 councils
- Non reporting – 1 council

**Figure 14: Average reported kerbside residual waste collected per household across local government areas**



24 Based on total number of households within reporting councils

25 Based on total population within reporting councils

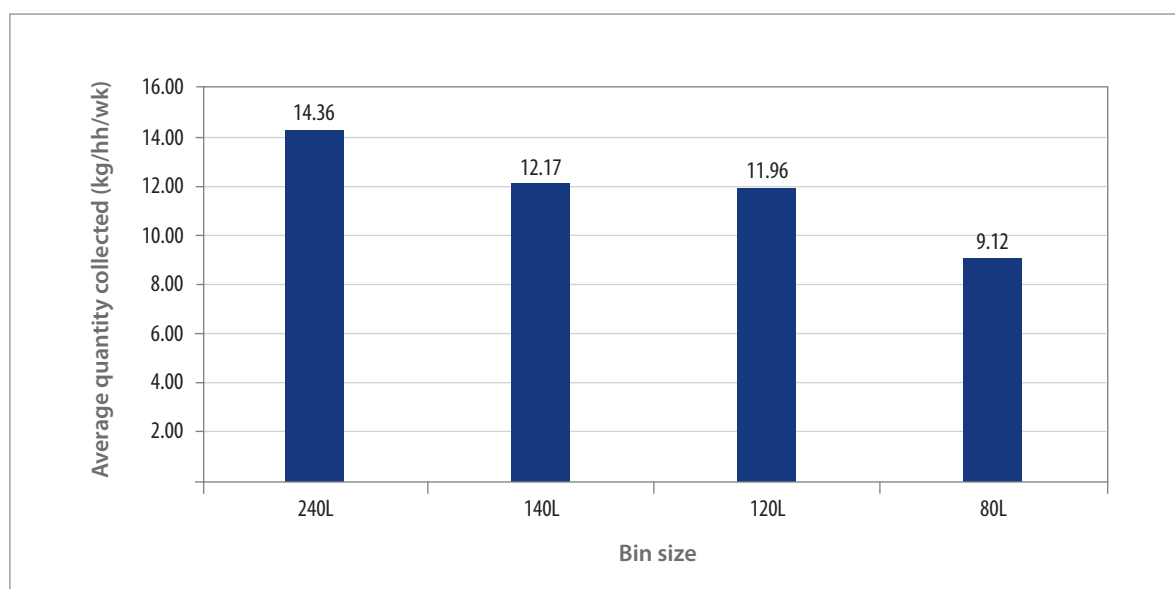
Four different residual waste collection systems were used by NSW councils (Table 11). 75 councils used a 240L MGB system and 75 councils adopted OEH preferred resource recovery practices for residual waste collection (80L MGB, 120L MGB, or 140L MGB).

**Table 11: Average reported annual quantity of kerbside residual waste collected, by collection system<sup>26</sup>**

Collection system	SMA	ERA	RRA	Rest of the State	No. of councils	Household collections	
						kg/hh/yr	kg/hh/wk
240L MGB	8	7	12	48	75	746.48	14.36
140L MGB	12	2	6	17	37	632.91	12.17
120L MGB	14	3	3	12	32	621.93	11.96
80L MGB	4	1	–	1	6	474.36	9.12
No service	–	–	–	1	1	–	–

Figure 15 compares average weekly household residual waste collected by collection system type. One of the preferred collection systems (80L MGB) showed lowest annual average collection of 9.12 kg/hh/wk but only six councils use the system type. The other two preferred collection types 120L and 140L MGBs were adopted by 46% (69 councils in total) of the councils with kerbside residual waste service averaging annual collection quantity at 11.96 kg/hh/wk and 12.17 kg/hh/wk respectively.

**Figure 15: Average weekly quantity collected of household residual waste, by collection system**



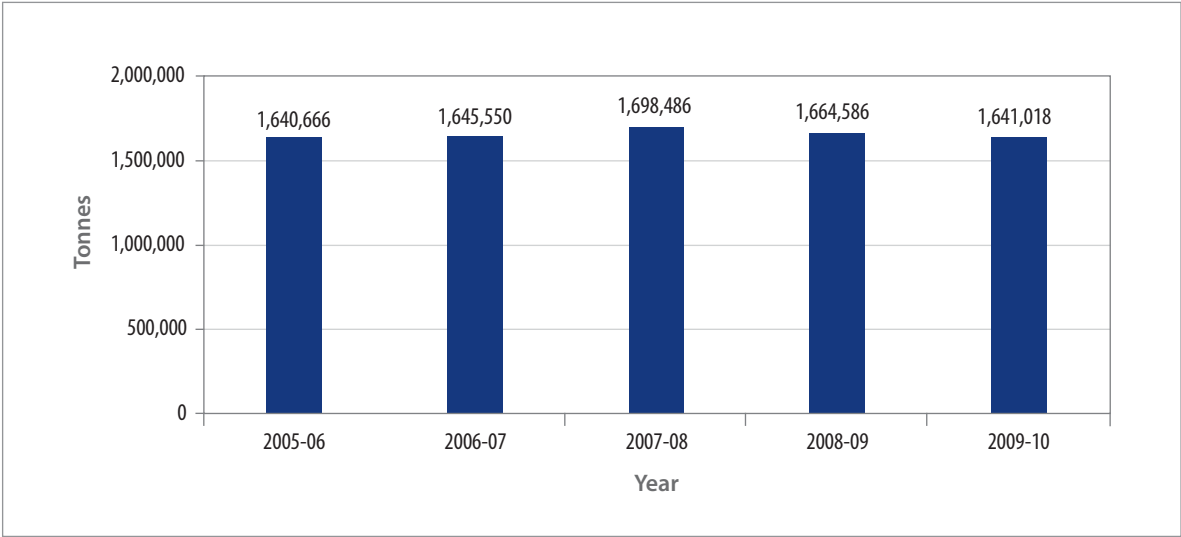
<sup>26</sup> The average annual figure is based on predominant bin size and larger proportion of dwelling types within councils. Also excludes non reporting councils for the period.



In 2009–10, total quantity of residual waste collected at the kerbside in NSW was 1,641,018 tonnes:

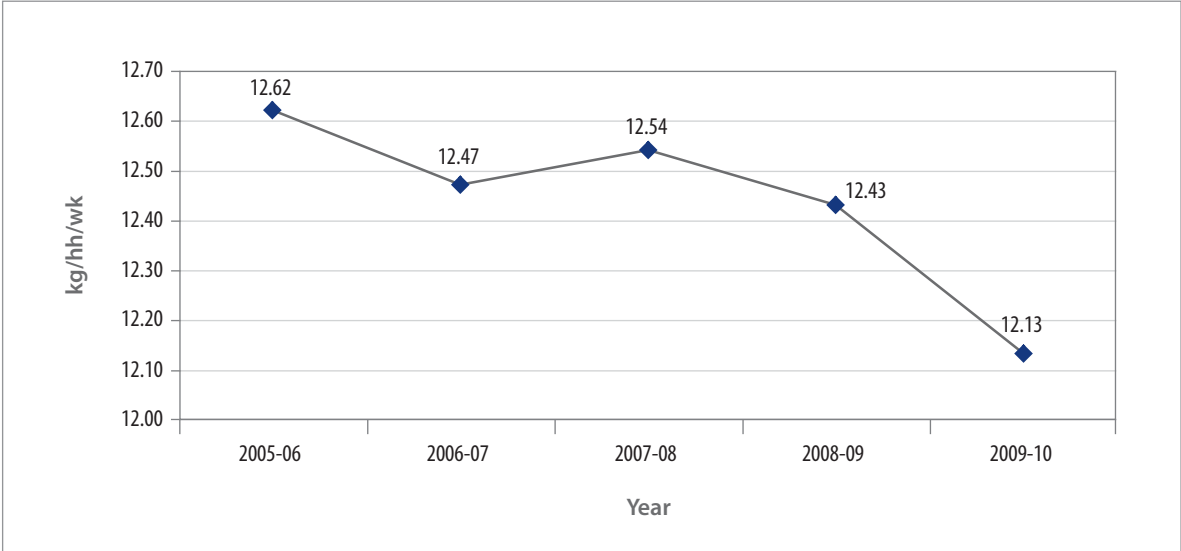
- 902,895 tonnes from the SMA
- 339,111 tonnes from the ERA
- 173,856 tonnes from the RRA
- 225,156 tonnes from the rest of the State

**Figure 16: Reported annual kerbside residual waste collected in NSW**



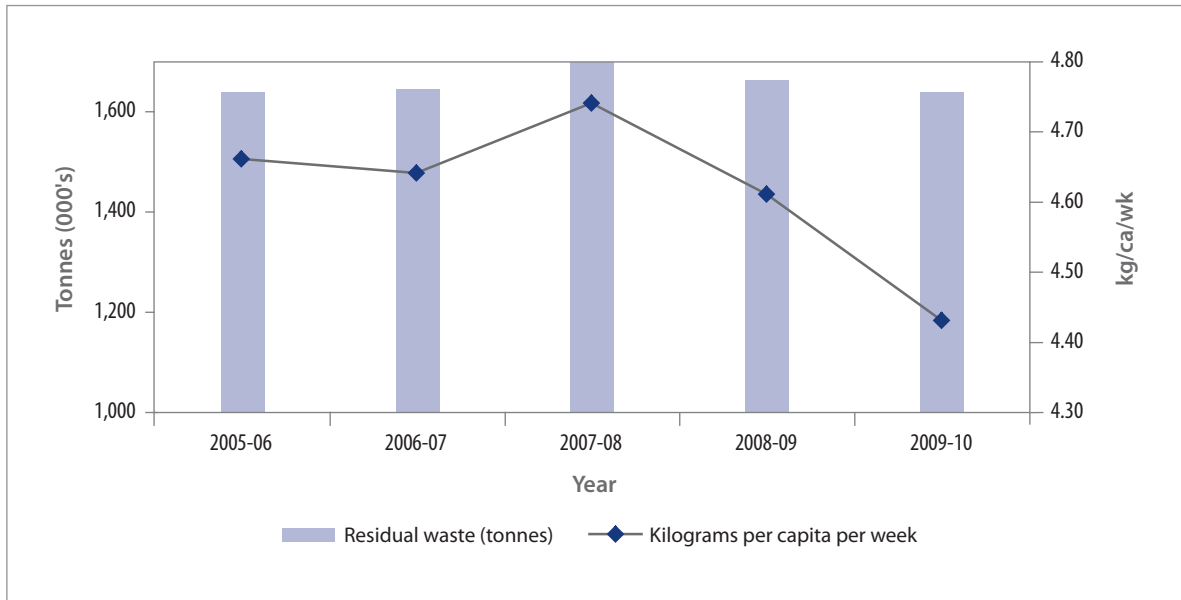
There has been a decrease of more than 57,000 tonnes of kerbside residual waste collected in 2009–10 compared to 2007–08, but a slight overall increment of 352 tonnes has been reported in NSW compared to 2005–06 figures.

**Figure 17: Reported average kerbside residual waste collected per week in NSW**



However, the average weekly collection of household residual waste has decreased by 0.49 kg/hh/wk since 2005–06 to 12.13 kg/hh/wk in 2009–10.

**Figure 18: Reported annual and average weekly per capita collection of kerbside residual waste in NSW**



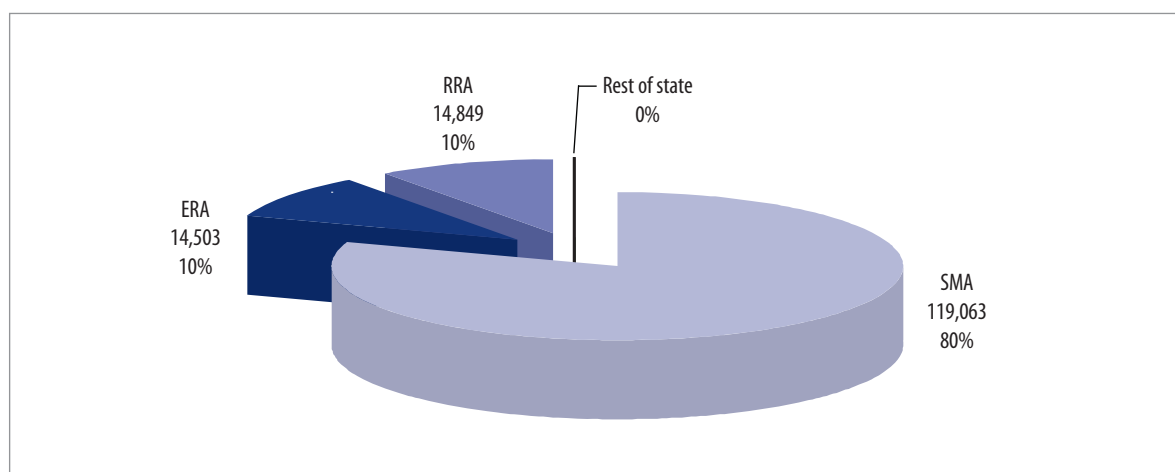
Quantities of residual waste collected have decreased on per capita basis relative to 2005–06 and although a slight increase in 2007–08 has been reported, the per capita basis has decreased from 4.66 kg/capita/wk to 4.43 kg/capita/wk overall.

## Alternative Waste Treatment (AWT)

Not all domestic residual waste collected at kerbside goes to landfill; some goes to Alternative Waste Treatment (AWT) facilities. AWT can use a range of different mechanical and biological treatment technologies to treat or process residual waste. Depending on the technology and the operation of the facility, these plants can: recover additional physical and organic resources from residual waste; recover energy from the waste; stabilise waste material prior to landfilling to reduce greenhouse gas emissions and reduce the mass of waste that goes to landfill and thus save on disposal costs. Typically, the ultimate residual wastes from the AWT process and any processed material that cannot be beneficially reused, is disposed of to landfill.

Councils reported that 148,415<sup>27</sup> tonnes of residual waste was recovered using AWT technologies in 2009–10. Of this 80% was in the SMA, 10% each was in the ERA and the RRA and rest of the State did not send any waste to AWT. Note that councils varied in how they reported recovery by an AWT facility as shown in the footnote to Appendix 2.

**Figure 19: Domestic waste recovered by AWT by region**



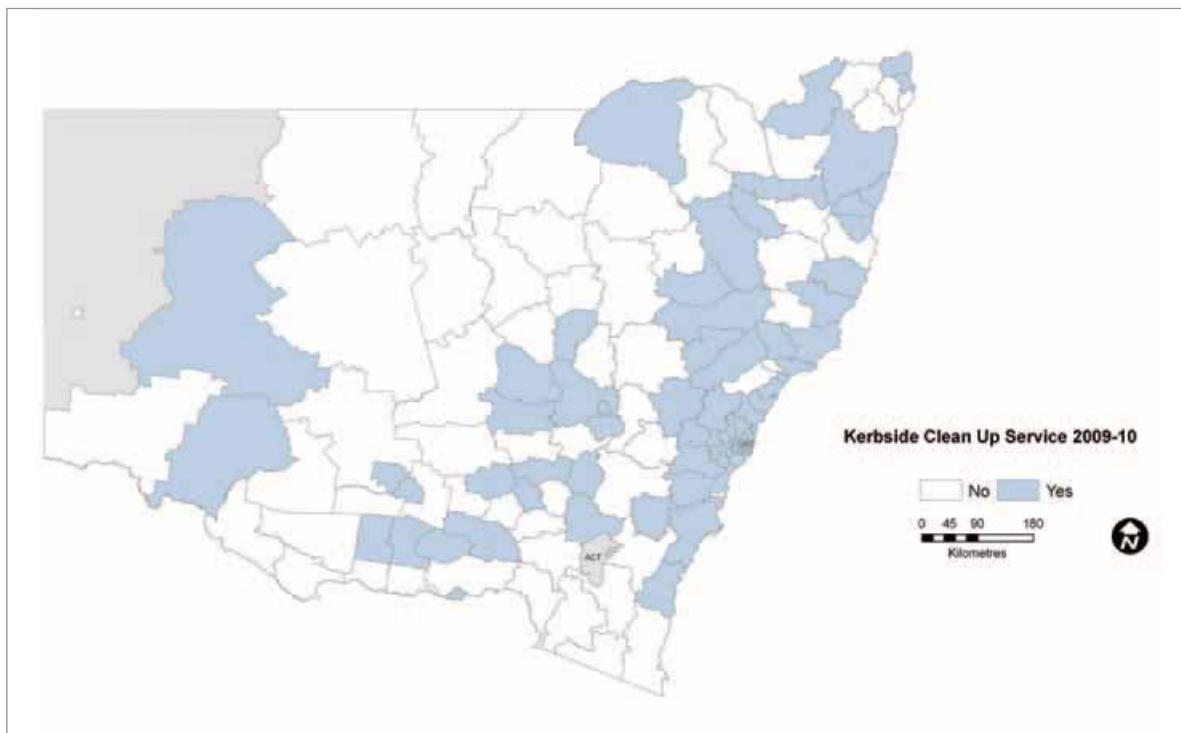
The total amount of waste processed through an AWT has more than doubled since 2005–06 to 357,065 tonnes and the trend of material reported as recovered through an AWT has increased from 43% in 2005–06 to 48% in 2009–10.

<sup>27</sup> The total excludes 24,620.39 tonnes of organics recovered through an AWT which is reported in kerbside organics collection

### 3. Kerbside Clean up/Hard waste collection

In NSW, 103 councils provided kerbside clean up collections, reaching 91% of all households in NSW (Figure 20). Access to kerbside clean up varied across NSW; with these services provided to 100% of households in the SMA, 95% in the ERA, 82% in the RRA and 59% in the rest of the State.

**Figure 20: NSW councils with a kerbside clean up service**



In 2009–10, 136,600<sup>28</sup> tonnes of material was collected in council clean-ups. 109,028 tonnes went to landfill and 27,572 tonnes were recycled.

The overall Resource Recovery Rate (RRR) for kerbside clean up in NSW was 20%.

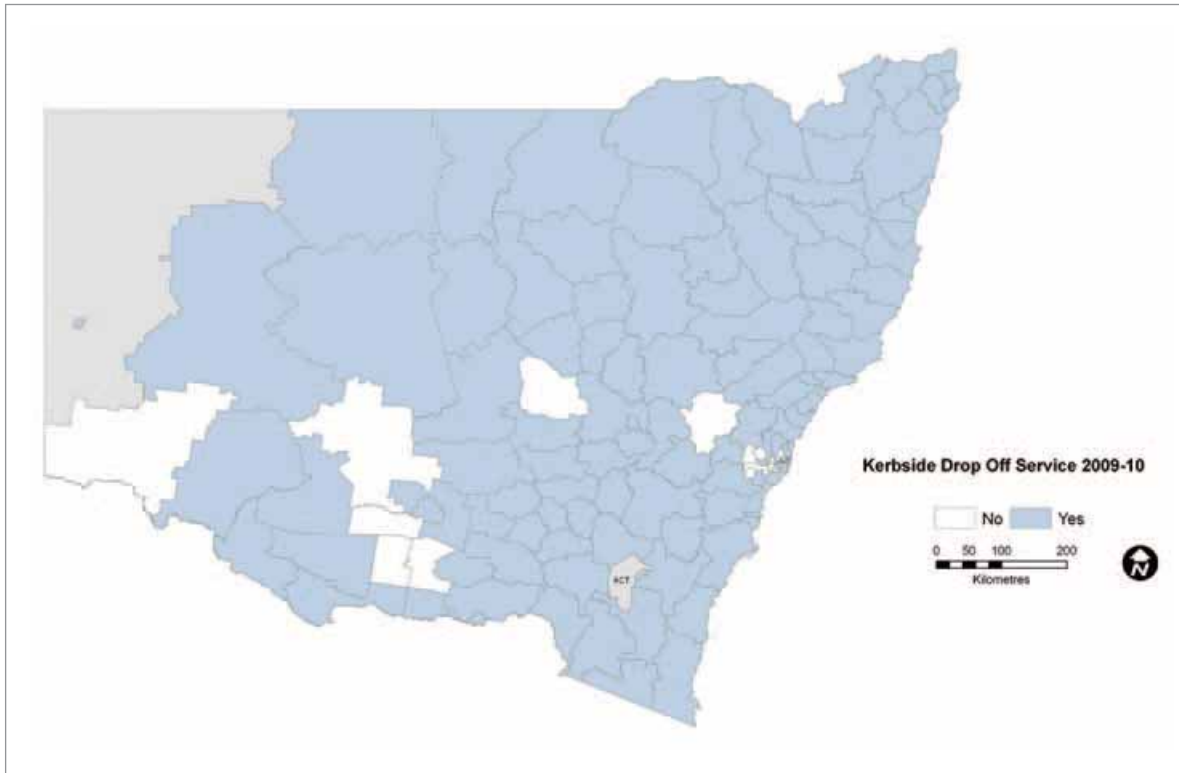
- SMA – 16,170 tonnes recycled and 81,823 tonnes waste to landfill (17% RRR)
- ERA – 7,459 tonnes recycled and 16,458 tonnes waste to landfill (31% RRR)
- RRA – 1,787 tonnes recycled and 6,020 tonnes waste to landfill (23% RRR)
- Rest of the State – 2,146 tonnes recycled and 4,477 tonnes waste to landfill (32% RRR)

28 Represents only 93 councils providing the collected tonnages

## 4. Drop off facilities provided by councils

One hundred and twenty three (123) NSW councils provided a recycling drop off facility (dry recycling and/or garden organics), which was accessible by 71% of all households and 69% of the entire population in NSW (Figure 21). Access to recycling and / or garden organics drop off facilities varied across NSW with access to these facilities at 42% (16 councils) in the SMA, 100% (13 councils) in the ERA, 100% (21 councils) in the RRA and 91% (73 councils) in the rest of the State.

**Figure 21: NSW councils providing a recycling drop off facility**



532,511<sup>29</sup> tonnes of material was collected in NSW, of which 295,303 tonnes were sent to landfill and 237,208 tonnes of recyclable material (58,822 tonnes dry recyclables and 178,386 tonnes garden organics) were collected at drop off facilities. The overall Resource Recovery Rate (RRR) for domestic drop off in NSW was 45%:

- 12,502 tonnes recycled and 6,084 tonnes disposed to landfill in the SMA (67% RRR)
- 74,850 tonnes recycled and 67,490 tonnes disposed to landfill in the ERA (53% RRR)
- 70,411 tonnes recycled and 78,474 tonnes disposed to landfill in the RRA (36% RRR)
- 79,446 tonnes recycled and 143,254 tonnes disposed to landfill in the Rest of the State (47% RRR)

29 Represents only 121 councils providing the collected tonnages

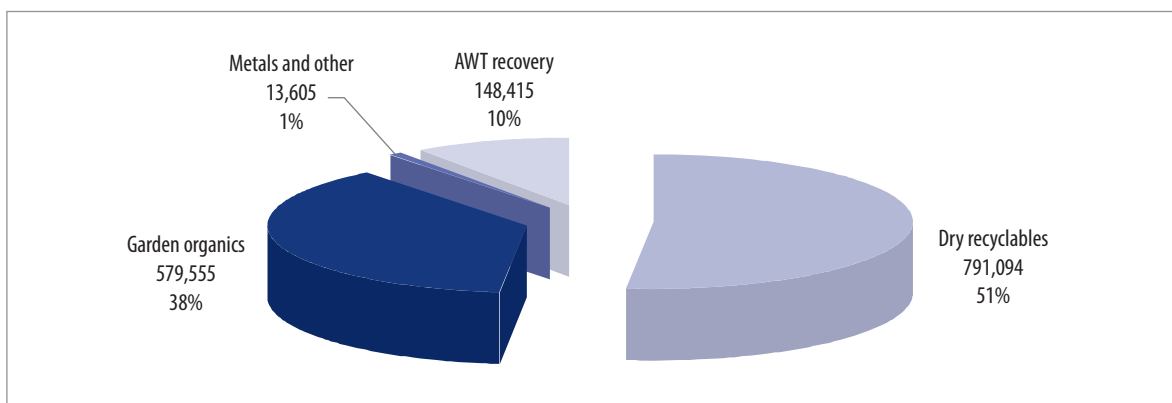
## 5. Domestic Waste Resource Recovery rates

The domestic waste recovery rate for individual councils is reported as the percentage of the total amount of materials disposed of by households that is recovered for recycling or processing. Average waste generation rates per household and per capita have also been developed to compare data at an individual level. When comparing figures from different local government areas, consideration should be given to regional variations in consumption patterns and available services.

This report is based on waste and recycling generated by households only, which is the major component of Municipal Solid Waste (MSW) but is not the total of MSW. The separate biennial WARR Strategy report provides updates on the progress that the NSW community is making towards the waste avoidance and resource recovery targets of the Strategy.

Figure 22 presents total domestic recyclables recovered from different sources. The dry recyclables and garden organics constitute most of the recovered materials with combined total of 89%.

**Figure 22: Reported recovery materials by category**



The domestic waste resource recovery rate for NSW in 2009–10 was 45.1% when all collected household waste and recycling is included in the calculation, i.e. residual waste, recycling, garden organics, clean-up and drop-off. The recovery rates for the regions are:

- SMA 48.5%
- ERA 43.3%
- RRA 49.3%
- Rest of the state 32.9%

**Table 12: Total domestic resource recovery rate trend**

Domestic recovery rate	2005–06	2006–07	2007–08	2008–09	2009–10
NSW	37.8%	40.8%	43.2%	43.7%	45.1%
SMA	39.2%	42.9%	47.1%	45.3%	48.5%
ERA	40.9%	40.9%	40.0%	43.0%	43.3%
Rest of the state	32.7%	37.2%	38.0%	40.0%	32.9%
RRA	–	–	–	–	49.3%



Figure 23: SMA recovery rate 2009–10

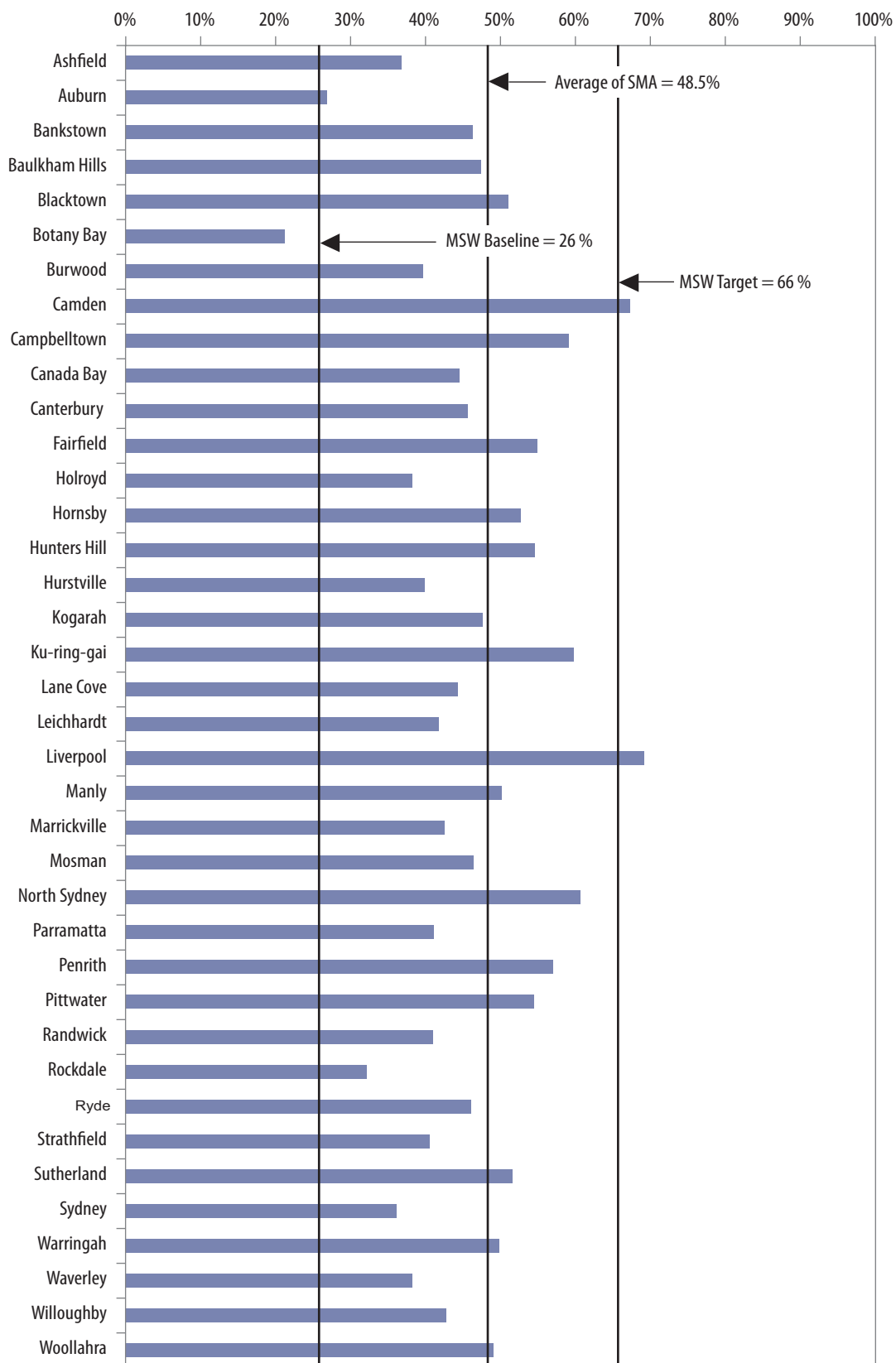


Figure 24: ERA recovery rate 2009–10

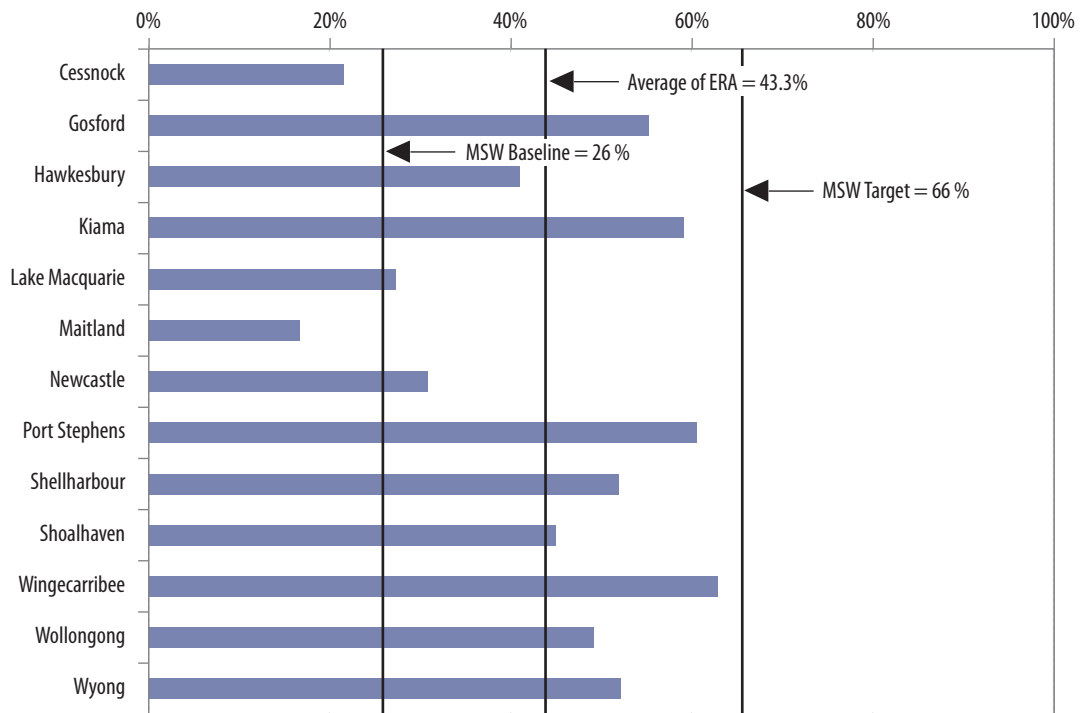
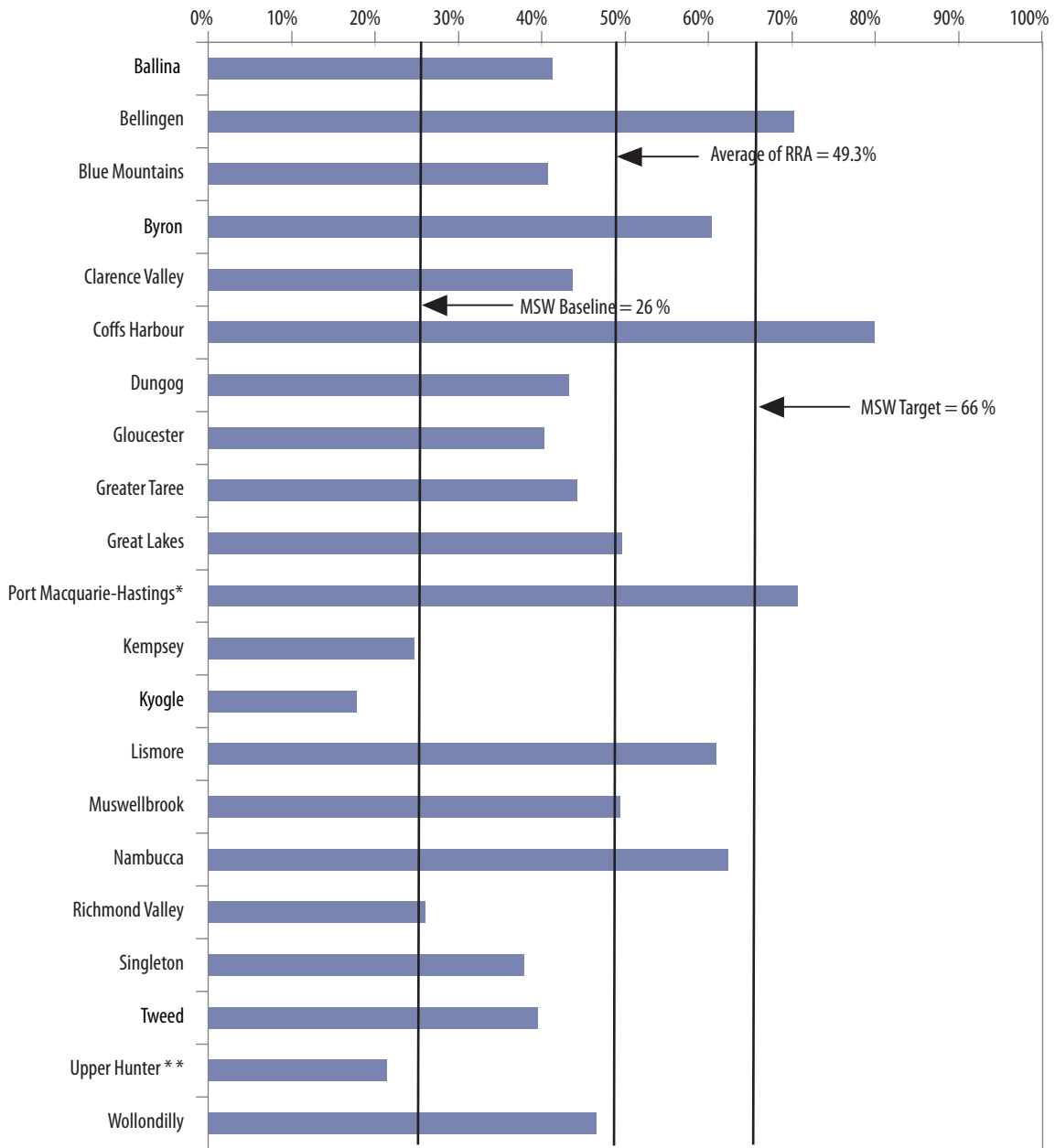


Figure 25: RRA recovery rate 2009–10

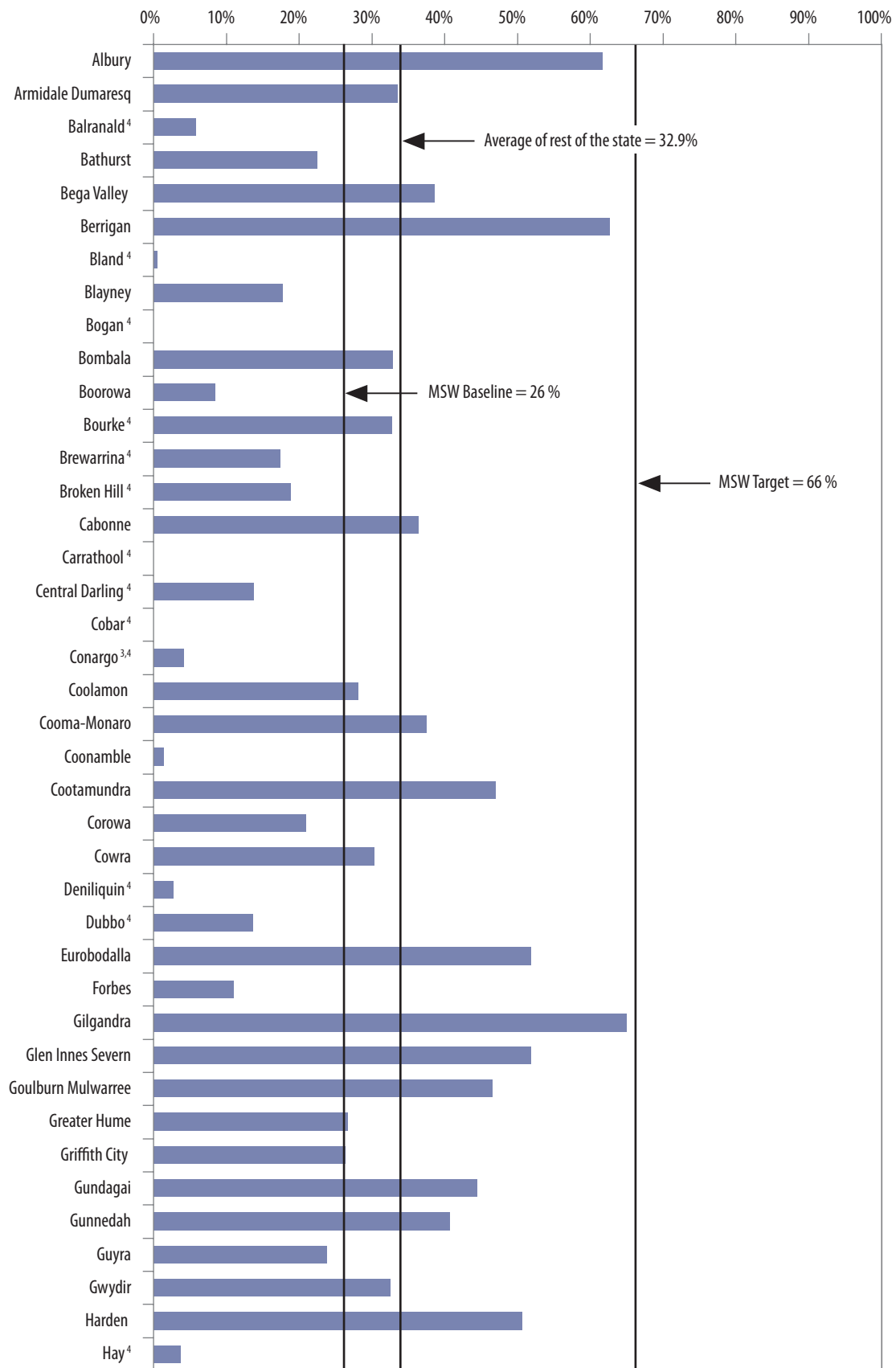


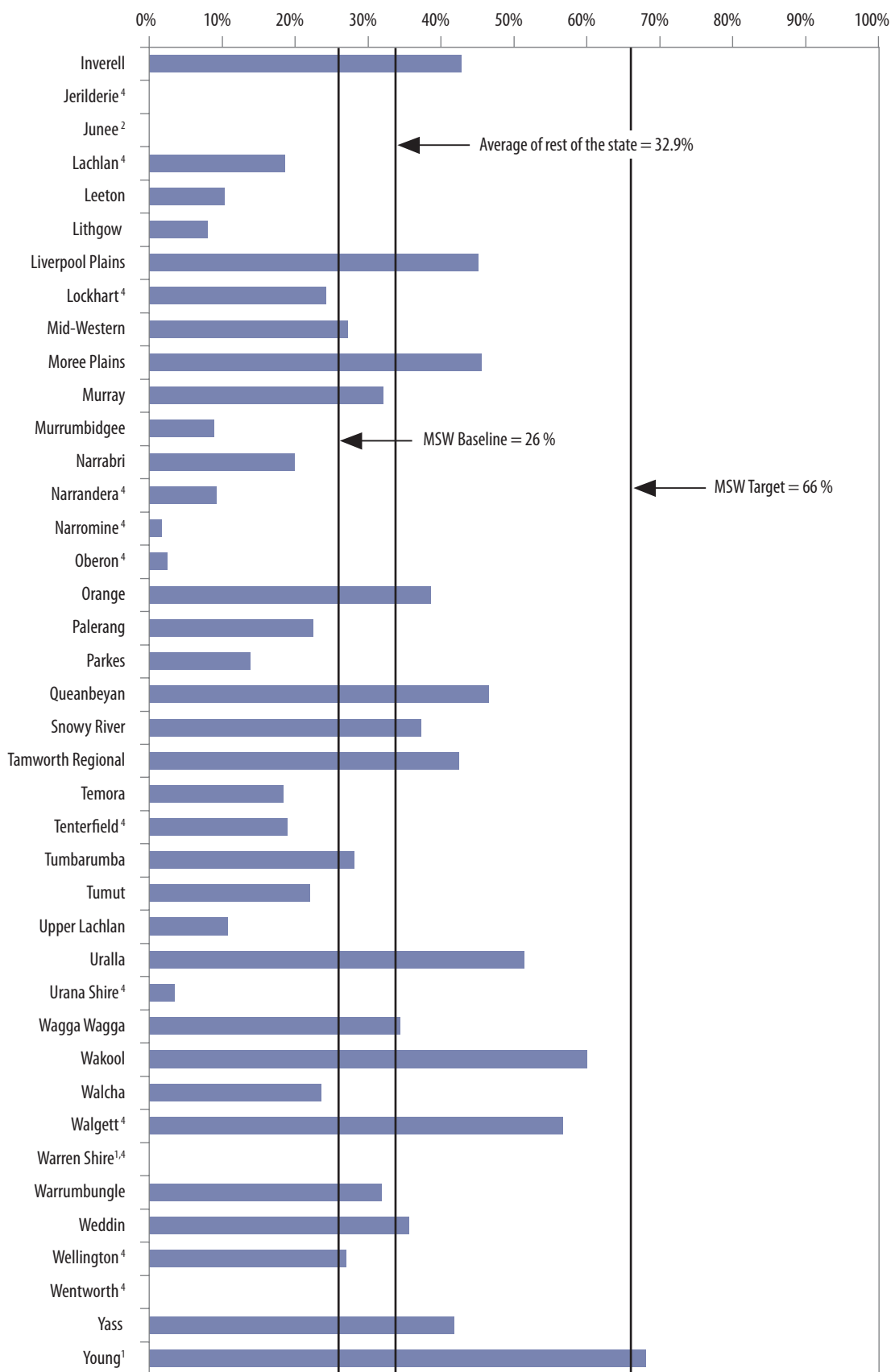
**Note:**

\* Large amount of C & I waste was excluded from the kerbside residual waste quantity

\*\* Substantial year to year variations in self reported disposal and resource recovery data are unexplained and have not been verified

Figure 26: Rest of the state recovery rate 2009–10





**Note:**

- 1 No kerbside waste data reported
- 2 No kerbside recycling data reported
- 3 No kerbside waste service
- 4 No kerbside recycling service

## 6. Domestic waste management charges

For the range of Domestic Waste Management Charges in NSW please refer Appendix 5.

The rate that councils charge each year for the provision domestic waste management services for each parcel of rateable land for which the service is available (s496 the Local Government Act 1993).

The rates are based on council charges provided. There may be various charges for bin sizes and frequency. The figures listed in Appendix 5 are based on the predominant bin size and frequency.

## Glossary

### ***AWT technology***

Alternative Waste Treatment technology

### ***Domestic waste generation***

The sum of the total of all materials collected or recovered through the domestic waste collection and resource recovery services (i.e. waste + recycling + garden organics + clean up).

### ***Domestic Waste Management Charge***

The rate that councils charge each year for the provision domestic waste management services for each parcel of rateable land for which the service is available (s496 the Local Government Act 1993).

### ***Drop off recycling***

Places where materials or goods can be lawfully deposited for resource recovery or special management.

### ***Dry recyclables***

The standard range of dry recyclables includes: recyclable paper and cardboard including newspapers, magazines, phone books, cardboard packaging and liquid paperboard; glass bottles and jars; steel cans and aerosols; aluminium rigid and semi-rigid packaging; all plastic containers.

### ***Household***

A household comprises the people that usually reside together within a single housing unit (house, unit, farm etc).

### ***Kerbside Clean up collection***

A kerbside waste collection for waste items that is too large for collection via the normal household waste service.

### ***Kerbside recycling***

A formalised kerbside collection system for recyclables from households, where the householder segregates the wastes according to material type and places them in containers on the kerbside for separate collection.



## **LGA**

Local Government Area

## **MGB**

Mobile Garbage Bin. Also in the general context refers to mobile bins used for the collection of recycling and garden organics.

## **OEH**

Office of Environment and Heritage

## **Organics**

Compostable organics is a generic term for all organic materials that are appropriate for collection and use as feedstocks for composting or in related biological treatment systems (Ex: anaerobic digestion).

Compostable organics is defined by its material components: residual food organics, garden organics, wood and timber, biosolids and agricultural organics.

Garden organics include:

- Putrescible garden organic material (grass clippings)
- Non-woody garden organic material
- Woody garden organic material
- Trees and limbs
- Stumps and rootballs (not usually accepted in kerbside collection systems).

Garden organics is one of the primary components of the compostable organics stream.

## **Predominant bin type**

Where a council offers residents a range of bin sizes for a particular waste stream, the size used by the greatest number of households in a given LGA is considered the predominant bin type.

## **Predominant service type**

Where a council offers residents a range of waste service types, the waste service provided to the greatest number of households is considered to be the predominant service type.

## **Recovery Rate**

The Recovery Rate is the proportion of domestic dry recyclables and organics recovered through kerbside and drop off resource recovery services compared to total domestic waste generation.

## **Residual waste**

Residual waste or garbage is materials that are not separated for recycling or recovery, but are generally disposed of at solid and inert waste landfills.

### ***Waste Avoidance and Resource Recovery (WARR) Act 2001***

An Act to promote waste avoidance and resource recovery. Its purpose is to develop a state-wide framework to achieve integrated waste and resource management planning, programs and service delivery, to provide for the continual reduction in waste generation, to minimise the consumption of natural resources and final disposal of waste and to encourage the most efficient use of resources.

### ***Waste Avoidance and Resource Recovery Strategy (WARR Strategy) 2003***

The development of the WARR Strategy is a requirement of the WARR Act. The initial Strategy was released in 2003 and an updated in 2007. The WARR Strategy provides guidance and priorities for action to ensure that efficient resource use and impacts on the environment are considered throughout the life cycle of goods and materials, including the extraction of raw materials, manufacturing, distribution, consumption and recovery for reprocessing or safe disposal.

## Appendix 1: Waste and Resource Recovery Services 2009–10

ABS	Council name	Region	DLG group	Population ABS (30 June 09)	Number of individual households	Data supplied	Kerbside domestic waste service	Kerbside domestic waste to AWT	Kerbside domestic recycling service	Kerbside domestic garden organics service	Kerbside clean up service	Drop off recycling facility
60	Albury	N	4	50,522	20,652	Y	Y	N	Y	Y	Y	Y
110	Armidale Dumaresq	N	4	25,696	10,067	Y	Y	N	Y	Y	N	Y
150	Ashfield	S	2	42,541	15,102	Y	Y	N	Y	Y	Y	N
200	Auburn	S	2	76,519	22,641	Y	Y	N	Y	Y	Y	N
250	Ballina	R	4	42,432	16,511	Y	Y	N	Y	N	N	Y
300	Bairnald	N	9	2,479	1,309	Y	Y	N	N	N	Y	Y
350	Bankstown	S	3	186,108	61,670	Y	Y	N	Y	Y	Y	N
470	Bathurst	N	4	39,339	14,591	Y	Y	N	Y	N	N	Y
500	Hills Shire	S	7	176,487	58,083	Y	Y	N	Y	Y	Y	Y
550	Bega Valley	N	4	33,481	14,855	Y	Y	N	Y	Y	N	Y
600	Bellingen	R	11	13,369	4,137	Y	Y	Y	Y	Y	Y	Y
650	Berrigan	N	10	8,591	3,600	Y	Y	N	Y	N	N	Y
750	Blacktown	S	3	299,797	99,163	Y	Y	Y	Y	N	Y	N
800	Bland	N	10	6,407	3,638	Y	Y	N	N	N	N	Y
850	Blayney	N	10	7,180	2,142	Y	Y	N	Y	N	Y	Y
900	Blue Mountains	R	7	77,784	32,202	Y	Y	N	Y	N	Y	Y
950	Bogan	N	9	3,003	913	Y	Y	N	N	N	N	Y
1000	Bombala	N	9	2,615	1,379	Y	Y	N	Y	N	N	Y
1050	Boorowa	N	9	2,452	908	Y	Y	N	Y	N	Y	Y
1100	Botany Bay	S	2	39,664	13,446	Y	Y	N	Y	N	Y	N
1150	Bourke	N	9	3,070	1,064	Y	Y	N	N	N	N	Y
1200	Brewarrina	N	9	1,911	580	Y	Y	N	N	N	Y	Y
1250	Broken Hill	N	4	19,960	9,560	Y	Y	N	N	Y	N	Y
1300	Burwood	S	2	33,678	11,241	Y	Y	N	Y	Y	Y	N

## Appendix 1: Waste and Resource Recovery Services 2009–10 (continued)

ABS	Council name	Region	DLG group	Population ABS (30 June 09)	Number of individual households	Data supplied	Kerbside domestic waste service	Kerbside domestic waste to AWT	Kerbside domestic recycling service	Kerbside domestic garden organics service	Kerbside clean up service	Drop off recycling facility
1350	Byron	R	4	32,126	12,972	Y	Y	N	Y	N	Y	Y
1400	Gabonne	N	11	13,246	4,516	Y	Y	N	Y	N	Y	Y
1450	Camden	S	6	55,243	17,202	Y	Y	Y	Y	Y	Y	N
1500	Campbelltown	S	7	152,107	49,825	Y	Y	Y	Y	Y	Y	Y
1520	Canada Bay	S	2	75,999	32,046	Y	Y	N	Y	Y	Y	N
1550	Canterbury	S	3	143,111	50,543	Y	Y	N	Y	Y	Y	N
1600	Carrathool	N	9	2,964	959	Y	Y	N	N	N	N	N
1700	Central Darling	N	9	2,019	968	Y	Y	N	N	N	Y	Y
1720	Cessnock	E	4	50,834	18,708	Y	Y	N	Y	N	Y	Y
1730	Clarence Valley	R	4	52,054	20,891	Y	Y	N	Y	Y	Y	Y
1750	Cobar	N	10	5,166	2,217	Y	Y	N	N	N	N	Y
1800	Coffs Harbour	R	4	71,677	28,834	Y	Y	Y	Y	Y	Y	Y
1860	Conargo	N	8	1,700	762	Y	N	N	N	N	N	Y
2000	Coolamon	N	9	4,219	2,351	Y	Y	N	Y	N	Y	Y
2060	Cooma–Monaro	N	10	10,416	4,554	Y	Y	N	Y	N	N	Y
2150	Coonamble	N	9	4,306	1,629	Y	Y	N	Y	N	Y	Y
2200	Cootamundra	N	10	7,703	3,225	Y	Y	N	Y	N	Y	Y
2310	Corowa	N	11	11,685	4,478	Y	Y	N	Y	N	N	Y
2350	Cowra	N	11	12,945	4,267	Y	Y	N	Y	N	N	Y
2500	Deniliquin	N	4	7,693	2,812	Y	Y	N	N	N	Y	Y
2600	Dubbo	N	4	41,211	14,722	Y	Y	N	N	N	Y	Y
2700	Dungog	R	10	8,646	3,494	Y	Y	N	Y	N	Y	Y
2750	Eurobodalla	N	4	37,442	20,400	Y	Y	N	Y	Y	Y	Y
2850	Fairfield	S	3	194,543	59,070	Y	Y	Y	Y	N	Y	Y
2900	Forbes	N	10	9,744	4,150	Y	Y	N	Y	N	Y	Y

2950	Gilgandra	N	9	4,669	1,649	Y	Y	N	Y	N	N	N	Y
3020	Glen Innes Severn	N	6	9,257	4,150	Y	Y	N	Y	N	N	N	Y
3050	Gloucester	R	9	5,094	1,975	Y	Y	N	Y	Y	Y	N	Y
3100	Gosford	E	7	166,626	66,840	Y	Y	N	Y	Y	Y	Y	Y
3310	Goulburn Mulwarree	N	4	28,349	9,402	Y	Y	N	Y	Y	Y	Y	Y
3350	Greater Taree	R	4	48,503	20,322	Y	Y	N	Y	Y	Y	Y	Y
3370	Greater Hume	N	11	10,400	3,575	Y	Y	N	Y	N	N	Y	Y
3400	Great Lakes	R	4	35,487	20,056	Y	Y	N	Y	Y	Y	Y	Y
3450	Griffith City	N	4	25,703	7,722	Y	Y	N	Y	N	Y	Y	Y
3500	Gundagai	N	9	3,870	1,151	Y	Y	N	Y	N	N	Y	Y
3550	Gunnedah	N	11	12,162	5,400	Y	Y	N	Y	Y	Y	Y	Y
3650	Guyra	N	9	4,521	1,519	Y	Y	N	Y	N	Y	Y	Y
3660	Gwydir	N	10	5,380	2,541	Y	Y	N	Y	N	N	Y	Y
3700	Harden	N	9	3,624	1,409	Y	Y	N	Y	N	N	Y	Y
3750	Port Macquarie-Hastings	R	4	75,104	33,569	Y	Y	Y	Y	Y	Y	Y	Y
3800	Hawkesbury	E	6	63,552	21,560	Y	Y	N	Y	N	Y	Y	Y
3850	Hay	N	9	3,370	1,224	Y	Y	N	N	N	N	Y	Y
3950	Holroyd	S	3	100,122	32,928	Y	Y	Y	Y	Y	N	Y	Y
4000	Hornsby	S	7	162,216	57,820	Y	Y	N	Y	Y	Y	Y	Y
4100	Hunters Hill	S	2	14,467	4,975	Y	Y	Y	Y	Y	Y	Y	N
4150	Hurstville	S	3	79,648	30,109	Y	Y	N	Y	Y	Y	Y	N
4200	Inverell	N	11	16,703	7,145	Y	Y	N	Y	N	N	Y	Y
4250	Jerilderie	N	8	1,676	624	Y	Y	N	N	N	Y	N	N
4300	Junee	N	10	6,283	2,188	Y	Y	N	Y	N	N	Y	Y
4350	Kempsey	R	4	29,331	10,960	Y	Y	N	Y	Y	Y	Y	Y
4400	Kiama	E	4	20,641	8,887	Y	Y	N	Y	Y	Y	Y	Y
4450	Kogarah	S	2	58,137	21,006	Y	Y	N	Y	Y	Y	Y	N
4500	Ku-ring-gai	S	3	111,400	38,627	Y	Y	N	Y	Y	Y	Y	N
4550	Kyogle	R	10	9,824	3,983	Y	Y	N	Y	N	N	Y	Y
4600	Lachlan	N	10	6,872	3,036	Y	Y	N	Y	N	Y	N	Y
4650	Lake Macquarie	E	5	199,277	66,787	Y	Y	N	Y	N	Y	Y	Y

## Appendix 1: Waste and Resource Recovery Services 2009–10 (continued)

ABS	Council name	Region	DLG group	Population ABS (30 June 09)	Number of individual households	Data supplied	Kerbside domestic waste service	Kerbside domestic waste to AWT	Kerbside domestic recycling service	Kerbside domestic garden organics service	Kerbside clean up service	Drop off recycling facility
4700	Lane Cove	S	2	32,501	12,568	Y	Y	Y	Y	Y	Y	N
4750	Leeton	N	11	11,906	5,034	Y	Y	N	Y	N	Y	Y
4800	Leichhardt	S	2	54,525	24,442	Y	Y	Y	Y	Y	Y	Y
4850	Lismore	R	4	45,645	14,417	Y	Y	Y	Y	Y	N	Y
4880	Lithgow	N	4	20,980	10,512	Y	Y	N	Y	Y	Y	N
4900	Liverpool	S	7	182,261	53,839	Y	Y	Y	Y	Y	Y	N
4920	Liverpool Plains	N	10	7,941	2,971	Y	Y	N	Y	N	Y	Y
4950	Lockhart	N	9	3,299	1,272	Y	Y	N	N	N	Y	Y
5050	Maitland	E	4	69,154	25,359	Y	Y	N	Y	N	N	Y
5150	Manly	S	2	40,939	17,551	Y	Y	N	Y	Y	Y	Y
5200	Marrickville	S	3	78,271	31,626	Y	Y	N	Y	Y	Y	N
5270	Mid-Western	N	4	22,677	12,115	Y	Y	N	Y	N	N	Y
5300	Moree Plains	N	11	14,406	6,132	Y	Y	N	Y	N	Y	Y
5350	Mosman	S	2	28,767	12,461	Y	Y	N	Y	Y	Y	Y
5500	Murray	N	10	7,236	3,582	Y	Y	NA	Y	NA	N	Y
5550	Murrumbidgee	N	9	2,556	901	Y	Y	N	Y	N	Y	N
5650	Muswellbrook	R	11	16,391	5,165	Y	Y	N	Y	Y	Y	Y
5700	Nambucca	R	11	19,186	6,875	Y	Y	Y	Y	Y	Y	Y
5750	Narrabri	N	11	13,693	4,725	Y	Y	N	Y	N	N	Y
5800	Narrandera	N	10	6,262	3,341	Y	Y	N	N	N	N	Y
5850	Narromine	N	10	6,818	2,500	Y	Y	N	N	N	Y	Y
5900	Newcastle	E	5	154,777	59,282	Y	Y	N	Y	Y	Y	Y
5950	North Sydney	S	2	63,914	35,596	Y	Y	Y	Y	Y	Y	N
6110	Oberon	N	10	5,391	1,808	Y	Y	N	N	N	N	Y
6150	Orange	N	4	38,685	16,548	Y	Y	N	Y	N	Y	Y

6180	Palerang	N	11	14,323	5,778	Y	Y	N	Y	N	N	N	Y
6200	Parkes	N	11	15,052	5,139	Y	Y	N	Y	N	N	Y	N
6250	Parramatta	S	3	167,431	60,435	Y	Y	N	Y	Y	Y	Y	N
6350	Penrith	S	7	184,611	63,270	Y	Y	N	Y	Y	Y	Y	N
6370	Pittwater	S	2	58,818	21,863	Y	Y	N	Y	Y	Y	Y	Y
6400	Port Stephens	E	4	66,754	28,798	Y	Y	Y	Y	N	Y	Y	Y
6470	Queanbeyan	N	4	40,661	15,739	Y	Y	N	Y	Y	Y	Y	Y
6550	Randwick	S	3	131,714	55,633	Y	Y	N	Y	Y	Y	Y	Y
6610	Richmond Valley	R	4	22,934	7,398	Y	Y	N	Y	N	N	Y	Y
6650	Rockdale	S	3	102,211	35,589	Y	Y	N	Y	N	Y	Y	Y
6700	Ryde	S	3	104,955	38,233	Y	Y	N	Y	Y	Y	Y	N
6900	Shellharbour	E	4	66,905	23,414	Y	Y	N	Y	Y	Y	Y	Y
6950	Shoalhaven	E	5	95,812	51,990	Y	Y	N	Y	N	Y	Y	Y
7000	Singleton	R	4	23,822	9,307	Y	Y	N	Y	N	Y	Y	Y
7050	Snowy River	N	10	8,061	4,622	Y	Y	N	Y	N	N	Y	Y
7100	Strathfield	S	2	36,489	12,974	Y	Y	N	Y	Y	Y	Y	Y
7150	Sutherland	S	3	219,828	80,185	Y	Y	N	Y	Y	Y	Y	Y
7210	Sydney	S	1	177,920	89,764	Y	Y	Y	Y	Y	Y	Y	Y
7310	Tamworth Regional	N	4	58,515	20,309	Y	Y	N	Y	Y	Y	Y	Y
7350	Temora	N	10	6,158	2,808	Y	Y	N	Y	N	Y	Y	Y
7400	Tenterfield	N	10	7,024	3,027	Y	Y	N	Y	N	Y	Y	Y
7450	Tumbarumba	N	9	3,735	1,307	Y	Y	N	Y	N	N	Y	Y
7510	Tumut	N	11	11,396	4,037	Y	Y	N	Y	N	N	Y	Y
7550	Tweed	R	5	88,993	36,382	Y	Y	N	Y	Y	Y	Y	Y
7620	Upper Hunter	R	11	14,043	4,905	Y	Y	N	Y	N	Y	Y	Y
7640	Upper Lachlan	N	10	7,512	2,557	Y	Y	N	Y	N	N	Y	Y
7650	Uralla	N	10	6,238	1,813	Y	Y	N	Y	N	Y	Y	Y
7700	Urana Shire	N	8	1,269	669	Y	Y	N	Y	N	Y	Y	N
7750	Wagga Wagga	N	4	62,904	21,988	Y	Y	N	Y	Y	Y	Y	Y
7800	Wakool	N	9	4,427	1,755	Y	Y	N	Y	N	N	Y	Y
7850	Walcha	N	9	3,286	1,750	Y	Y	N	Y	N	N	Y	Y

## Appendix 1: Waste and Resource Recovery Services 2009–10 (continued)

ABS	Council name	Region	DLG group	Population ABS (30 June 09)	Number of individual households	Data supplied	Kerbside domestic waste service	Kerbside domestic waste to AWT	Kerbside domestic recycling service	Kerbside domestic garden organics service	Kerbside clean up service	Drop off recycling facility
7900	Walgett	N	10	7,209	3,386	Y	Y	N	N	N	N	Y
7950	Warren Shire	N	9	2,833	1,123	Y	Y	N	N	N	N	Y
8000	Warringham	S	3	144,092	57,393	Y	Y	N	Y	Y	Y	Y
8020	Warrumbungle	N	11	10,323	3,763	Y	Y	N	Y	N	N	Y
8050	Waverley	S	2	68,316	30,883	Y	Y	N	Y	Y	Y	N
8100	Weddin	N	9	3,751	1,436	Y	Y	N	Y	N	N	Y
8150	Wellington	N	10	8,904	3,200	Y	Y	N	N	N	Y	Y
8200	Wentworth	N	10	7,127	2,725	Y	Y	N	N	N	N	N
8250	Willoughby	S	2	69,269	26,948	Y	Y	Y	Y	Y	Y	Y
8350	Wingecarribee	E	4	46,364	17,956	Y	Y	Y	Y	N	Y	Y
8400	Wollondilly	R	6	43,278	14,522	Y	Y	Y	Y	Y	Y	Y
8450	Wollongong	E	5	201,438	78,000	Y	Y	N	Y	Y	Y	Y
8500	Woollahra	S	2	55,228	25,896	Y	Y	N	Y	Y	Y	N
8550	Wyong	E	7	149,382	58,838	Y	Y	N	Y	Y	Y	Y
8710	Yass	N	11	14,796	4,580	Y	Y	N	Y	N	Y	Y
8750	Young	N	11	12,861	5,914	Y	Y	N	Y	N	Y	Y
					<b>Total count</b>	<b>152</b>	<b>151</b>	<b>20</b>	<b>126</b>	<b>64</b>	<b>103</b>	<b>123</b>

**Note:** NA – Not available/not reported



## Appendix 2: Total domestic and kerbside resource recovery rate 2009–10

ABS	Council name	Region	DLG Group	Total domestic waste streams (kerbside, clean up, drop off)				Domestic waste streams (kerbside service only)			
				Dry recyclables, garden organics and AWT recovery	Residual waste	Total generation	Total domestic resource recovery rate	Dry recyclables, garden organics and AWT recovery	Residual waste	Total generation	Domestic kerbside resource recovery rate
60	Albury	N	4	19,109	11,861	30,970	61.7%	8,255	10,702	18,956	43.5%
110	Armidale Dumaresq	N	4	5,357	10,664	16,021	33.4%	5,357	4,541	9,898	54.1%
150	Ashfield	S	2	6,359	10,899	17,258	36.8%	6,036	9,999	16,036	37.6%
200	Auburn	S	2	7,473	20,337	27,810	26.9%	7,423	18,572	25,995	28.6%
250	Ballina	R	4	9,196	13,072	22,268	41.3%	3,420	12,076	15,496	22.1%
300	Balranald	N	9	25	403	428	5.8%	-	196	196	NA
350	Bankstown	S	3	36,968	42,843	79,811	46.3%	36,347	39,524	75,871	47.9%
470	Bathurst	N	4	4,932	17,024	21,956	22.5%	3,251	10,024	13,275	24.5%
500	Baulkham Hills	S	7	38,452	42,563	81,015	47.5%	36,351	37,457	73,808	49.3%
550	Bega Valley	N	4	10,366	16,508	26,874	38.6%	9,528	13,976	23,504	40.5%
600	Bellingen	R	11	4,390	1,856	6,246	70.3%	4,310	1,781	6,091	70.8%
650	Berrigan	N	10	1,978	1,177	3,156	62.7%	1,754	930	2,684	65.4%
750	Blacktown	S	3	61,982	59,271	121,253	51.1%	61,566	53,909	115,475	53.3%
800	Bland	N	10	16	3,443	3,459	0.5%	-	3,087	3,087	NA
850	Blayney	N	10	1,214	5,614	6,828	17.8%	587	2,155	2,742	21.4%
900	Blue Mountains	R	7	17,523	25,462	42,985	40.8%	9,037	21,684	30,721	29.4%
950	Bogan	N	9	-	500	500	NA	-	500	500	NA
1000	Bombala	N	9	999	2,046	3,045	32.8%	405	525	930	43.6%
1050	Boorowa	N	9	79	853	932	8.5%	42	832	874	4.8%
1100	Botany Bay	S	2	2,950	10,911	13,860	21.3%	2,950	9,822	12,772	23.1%
1150	Bourke	N	9	700	1,437	2,137	32.8%	-	737	737	NA
1200	Brewarrina	N	9	105	500	605	17.4%	-	300	300	NA

## Appendix 2: Total domestic and kerbside resource recovery rate 2009–10 (continued)

ABS	Council name	Region	DLG Group	Total domestic waste streams (kerbside, clean up, drop off)				Domestic waste streams (kerbside service only)			
				Dry recyclables, garden organics and AWT recovery	Residual waste	Total generation	Total domestic resource recovery rate	Dry recyclables, garden organics and AWT recovery	Residual waste	Total generation	Domestic kerbside resource recovery rate
1250	Broken Hill	N	4	3,746	16,192	19,937	18.8%	1,055	6,560	7,615	13.9%
1300	Burwood	S	2	5,121	7,792	12,913	39.7%	5,096	7,273	12,369	41.2%
1350	Byron	R	4	11,237	7,359	18,596	60.4%	4,731	6,251	10,982	43.1%
1400	Cabonne	N	11	2,934	5,146	8,080	36.3%	725	1,913	2,638	27.5%
1450	Camden	S	6	16,857	8,191	25,048	67.3%	16,665	7,450	24,115	69.1%
1500	Campbelltown	S	7	40,901	28,222	69,122	59.2%	40,596	23,987	64,584	62.9%
1520	Canada Bay	S	2	13,645	16,955	30,600	44.6%	13,355	15,450	28,805	46.4%
1550	Canterbury	S	3	30,245	36,007	66,252	45.7%	30,154	33,035	63,189	47.7%
1600	Carrathool	N	9	-	264	264	NA	-	264	264	NA
1700	Central Darling	N	9	190	1,198	1,388	13.7%	-	952	952	NA
1720	Cessnock	E	4	6,049	21,994	28,043	21.6%	4,197	15,466	19,663	21.3%
1730	Clarence Valley	R	4	16,248	20,920	37,168	43.7%	8,827	12,885	21,712	40.7%
1750	Cobar	N	10	-	3,335	3,335	NA	-	1,330	1,330	0.0%
1800	Coffs Harbour	R	4	27,278	6,865	34,143	79.9%	23,135	4,276	27,411	84.4%
1860	Conargo	N	8	57	1,324	1,381	4.1%	-	-	-	NA
2000	Coolamon	N	9	284	725	1,009	28.1%	284	725	1,009	28.1%
2060	Cooma-Monaro	N	10	1,885	3,132	5,017	37.6%	637	1,728	2,365	26.9%
2150	Coonamble	N	9	40	3,000	3,040	1.3%	30	1,500	1,530	2.0%
2200	Cootamundra	N	10	3,565	4,028	7,594	47.0%	510	1,949	2,459	20.7%
2310	Corowa	N	11	1,399	5,315	6,714	20.8%	1,094	2,315	3,409	32.1%
2350	Cowra	N	11	1,783	4,091	5,874	30.4%	786	3,293	4,079	19.3%
2500	Deniliquin	N	4	122	4,457	4,579	2.7%	-	2,252	2,252	NA
2600	Dubbo	N	4	2,199	13,900	16,099	13.7%	-	12,205	12,205	NA

2700	Dungog	R	10	1,115	1,457	2,572	43.4%	715	1,078	1,793	39.9%
2750	Eurobodalla	N	4	11,769	10,909	22,677	51.9%	7,212	5,836	13,048	55.3%
2850	Fairfield	S	3	41,990	34,395	76,385	55.0%	41,790	34,395	76,185	54.9%
2900	Forbes	N	10	1,173	9,532	10,705	11.0%	460	3,387	3,847	12.0%
2950	Gilgandra	N	9	1,827	982	2,809	65.0%	618	845	1,463	42.2%
3020	Glen Innes Severn	N	6	2,717	2,525	5,242	51.8%	1,290	1,875	3,165	40.8%
3050	Gloucester	R	9	2,769	4,096	6,865	40.3%	494	1,229	1,723	28.7%
3100	Gosford	E	7	51,953	42,181	94,134	55.2%	41,123	35,511	76,634	53.7%
3310	Goulburn Mulwarree	N	4	5,724	6,587	12,311	46.5%	5,086	5,157	10,243	49.7%
3350	Greater Taree	R	4	12,885	16,168	29,053	44.3%	9,575	10,076	19,651	48.7%
3370	Greater Hume	N	11	1,128	3,094	4,222	26.7%	750	1,594	2,344	32.0%
3400	Great Lakes	R	4	15,741	15,946	31,687	49.7%	8,068	7,226	15,294	52.8%
3450	Griffith City	N	4	2,294	6,407	8,702	26.4%	1,756	6,314	8,070	21.8%
3500	Gundagai	N	9	473	590	1,063	44.5%	400	530	930	43.0%
3550	Gunnedah	N	11	3,631	5,304	8,936	40.6%	2,321	2,595	4,916	47.2%
3650	Guyra	N	9	326	1,043	1,369	23.8%	268	827	1,095	24.4%
3660	Gwydir	N	10	851	1,765	2,616	32.5%	527	1,582	2,109	25.0%
3700	Harden	N	9	1,131	1,106	2,237	50.6%	254	721	975	26.1%
3750	Port Macquarie - Hastings	R	4	33,548	13,918	47,467	70.7%	26,538	10,121	36,658	72.4%
3800	Hawkesbury	E	6	15,008	21,592	36,600	41.0%	11,400	19,724	31,124	36.6%
3850	Hay	N	9	100	2,600	2,700	3.7%	-	800	800	NA
3950	Holroyd	S	3	16,261	26,236	42,496	38.3%	15,261	23,168	38,428	39.7%
4000	Hornsby	S	7	37,564	33,705	71,269	52.7%	35,256	30,328	65,584	53.8%
4100	Hunters Hill	S	2	2,763	2,291	5,054	54.7%	2,763	2,064	4,826	57.2%
4150	Hurstville	S	3	15,771	23,712	39,483	39.9%	15,771	21,574	37,345	42.2%
4200	Inverell	N	11	1,800	2,400	4,200	42.9%	1,800	2,400	4,200	42.9%
4250	Jerilderie	N	8	-	832	832	NA	-	832	832	NA
4300	Junee	N	10	-	1,325	1,325	NA	-	717	717	NA
4350	Kempsey	R	4	6,342	19,254	25,596	24.8%	4,553	16,260	20,813	21.9%
4400	Kiama	E	4	5,636	3,896	9,532	59.1%	5,499	3,723	9,222	59.6%
4450	Kogarah	S	2	12,208	13,412	25,620	47.6%	12,088	11,770	23,858	50.7%

## Appendix 2: Total domestic and kerbside resource recovery rate 2009–10 (continued)

ABS	Council name	Region	DLG Group	Total domestic waste streams (kerbside, clean up, drop off)				Domestic waste streams (kerbside service only)			
				Dry recyclables, garden organics and AWT recovery	Residual waste	Total generation	Total domestic resource recovery rate	Dry recyclables, garden organics and AWT recovery	Residual waste	Total generation	Domestic kerbside resource recovery rate
4500	Ku-ring-gai	S	3	33,488	22,498	55,986	59.8%	33,300	20,098	53,398	62.4%
4550	Kyogle	R	10	890	4,096	4,986	17.9%	-	2,158	2,158	NA
4600	Lachlan	N	10	480	2,100	2,580	18.6%	480	2,100	2,580	18.6%
4650	Lake Macquarie	E	5	26,158	69,905	96,063	27.2%	17,858	59,020	76,878	23.2%
4700	Lane Cove	S	2	5,389	6,765	12,154	44.3%	5,341	6,007	11,348	47.1%
4750	Leeton	N	11	625	5,409	6,034	10.4%	612	2,578	3,190	19.2%
4800	Leichhardt	S	2	9,191	12,791	21,983	41.8%	8,851	10,575	19,426	45.6%
4850	Lismore	R	4	18,827	12,037	30,864	61.0%	13,819	5,708	19,527	70.8%
4880	Lithgow	N	4	786	8,963	9,749	8.1%	786	3,663	4,449	17.7%
4900	Liverpool	S	7	49,516	22,127	71,644	69.1%	49,266	19,842	69,109	71.3%
4920	Liverpool Plains	N	10	2,063	2,508	4,571	45.1%	1,906	2,500	4,406	43.3%
4950	Lockhart	N	9	388	1,209	1,597	24.3%	-	417	417	NA
5050	Maitland	E	4	6,641	33,174	39,814	16.7%	5,514	21,431	26,945	20.5%
5150	Manly	S	2	8,523	8,453	16,977	50.2%	7,367	7,478	14,845	49.6%
5200	Marrickville	S	3	13,015	17,538	30,553	42.6%	12,672	16,184	28,856	43.9%
5270	Mid-Western	N	4	2,581	6,902	9,483	27.2%	2,581	5,767	8,348	30.9%
5300	Moree Plains	N	11	3,633	4,328	7,961	45.6%	1,495	2,890	4,385	34.1%
5350	Mosman	S	2	5,512	6,374	11,885	46.4%	4,676	5,971	10,647	43.9%
5500	Murray	N	10	905	1,913	2,818	32.1%	681	1,546	2,227	30.6%
5550	Murrumbidgee	N	9	65	662	728	9.0%	65	62	128	51.2%
5650	Muswellbrook	R	11	3,884	3,974	7,857	49.4%	3,850	2,825	6,675	57.7%
5700	Nambucca	R	11	6,895	4,162	11,056	62.4%	6,558	1,521	8,079	81.2%
5750	Narrabri	N	11	1,871	7,524	9,395	19.9%	1,871	7,524	9,395	19.9%

5800	Narrandera	N	10	503	4,950	5,453	9.2%	-	1,650	1,650	NA
5850	Narromine	N	10	51	3,025	3,076	1.6%	-	1,146	1,146	NA
5900	Newcastle	E	5	22,076	49,531	71,607	30.8%	14,578	46,016	60,594	24.1%
5950	North Sydney	S	2	13,429	8,694	22,123	60.7%	11,980	7,142	19,122	62.7%
6110	Oberon	N	10	58	2,260	2,318	2.5%	-	1,560	1,560	NA
6150	Orange	N	4	9,038	14,379	23,417	38.6%	3,682	12,063	15,745	23.4%
6180	Palerang	N	11	2,564	8,845	11,409	22.5%	589	942	1,531	38.5%
6200	Parkes	N	11	970	6,010	6,980	13.9%	970	3,000	3,970	24.4%
6250	Parramatta	S	3	26,219	37,514	63,733	41.1%	26,219	32,991	59,210	44.3%
6350	Penrith	S	7	45,515	34,261	79,775	57.1%	45,356	31,565	76,921	59.0%
6370	Pittwater	S	2	19,561	16,353	35,914	54.5%	11,637	10,559	22,196	52.4%
6400	Port Stephens	E	4	19,254	12,527	31,781	60.6%	17,821	10,976	28,796	61.9%
6470	Queanbeyan	N	4	7,403	8,485	15,888	46.6%	4,509	8,037	12,546	35.9%
6550	Randwick	S	3	20,878	29,948	50,827	41.1%	20,053	26,648	46,702	42.9%
6610	Richmond Valley	R	4	3,195	9,038	12,233	26.1%	634	4,774	5,408	11.7%
6650	Rockdale	S	3	13,752	29,009	42,761	32.2%	8,863	29,009	37,872	23.4%
6700	Ryde	S	3	20,775	24,314	45,089	46.1%	19,472	21,800	41,272	47.2%
6900	Shellharbour	E	4	20,185	18,642	38,827	52.0%	14,011	12,456	26,466	52.9%
6950	Shoalhaven	E	5	23,780	29,059	52,839	45.0%	11,434	21,802	33,236	34.4%
7000	Singleton	R	4	5,288	8,651	13,939	37.9%	849	2,922	3,771	22.5%
7050	Snowy River	N	10	1,186	1,990	3,177	37.3%	455	956	1,411	32.3%
7100	Strathfield	S	2	5,179	7,590	12,769	40.6%	885	1,379	2,264	39.1%
7150	Sutherland	S	3	52,957	49,631	102,589	51.6%	-	270	270	NA
7210	Sydney	S	1	21,000	37,180	58,180	36.1%	6,958	9,913	16,872	41.2%
7310	Tamworth Regional	N	4	14,906	20,157	35,063	42.5%	2,079	6,053	8,132	25.6%
7350	Temora	N	10	822	3,632	4,454	18.5%	397	1,388	1,785	22.2%
7400	Tenterfield	N	10	973	4,160	5,133	19.0%	5,179	7,367	12,546	41.3%
7450	Tumbarumba	N	9	374	961	1,335	28.0%	52,705	40,834	93,539	56.3%
7510	Tumut	N	11	1,105	3,900	5,005	22.1%	20,635	35,508	56,144	36.8%
7550	Tweed	R	5	16,145	24,675	40,820	39.6%	7,896	12,873	20,769	38.0%

## Appendix 2: Total domestic and kerbside resource recovery rate 2009 – 10 (continued)

ABS	Council name	Region	DLG Group	Total domestic waste streams (kerbside, clean up, drop off)				Domestic waste streams (kerbside service only)			
				Dry recyclables, garden organics and AWT recovery	Residual waste	Total generation	Total domestic resource recovery rate	Dry recyclables, garden organics and AWT recovery	Residual waste	Total generation	Domestic kerbside resource recovery rate
7620	Upper Hunter *	R	11	2,283	8,327	10,610	21.5%	70	1,750	1,820	3.8%
7640	Upper Lachlan	N	10	485	4,033	4,518	10.7%	-	1,460	1,460	NA
7650	Uralla	N	10	2,489	2,353	4,842	51.4%	364	670	1,034	35.2%
7700	Urana Shire	N	8	11	304	315	3.5%	648	3,400	4,048	16.0%
7750	Wagga Wagga	N	4	7,909	15,075	22,984	34.4%	13,379	20,210	33,589	39.8%
7800	Wakool	N	9	1,260	838	2,098	60.1%	807	3,902	4,709	17.1%
7850	Waicha	N	9	288	930	1,218	23.6%	485	1,508	1,993	24.3%
7900	Walgett	N	10	2,255	1,724	3,979	56.7%	1,071	1,422	2,493	43.0%
7950	Warren Shire	N	9	-	-	-	NA	-	270	270	0.0%
8000	Warringham	S	3	31,550	31,727	63,277	49.9%	5,945	10,271	16,215	36.7%
8020	Warrumbungle	N	11	1,170	2,500	3,670	31.9%	348	730	1,078	32.3%
8050	Waverley	S	2	9,281	14,947	24,228	38.3%	94	620	714	13.2%
8100	Weddin	N	9	299	541	840	35.6%	-	1,661	1,661	NA
8150	Wellington	N	10	830	2,250	3,080	26.9%	-	1,500	1,500	NA
8200	Wentworth	N	10	-	2,500	2,500	NA	-	500	500	NA
8250	Willoughby	S	2	17,769	23,827	41,595	42.7%	17,543	22,871	40,415	43.4%
8350	Wingecarribee	E	4	16,621	9,827	26,448	62.8%	8,511	8,479	16,990	50.1%
8400	Wollondilly	R	6	7,114	8,160	15,274	46.6%	5,553	6,912	12,466	44.5%
8450	Wollongong	E	5	50,194	51,803	101,997	49.2%	40,147	38,639	78,786	51.0%
8500	Woollahra	S	2	12,008	12,459	24,467	49.1%	11,968	11,505	23,473	51.0%
8550	Wyong	E	7	48,507	44,428	92,935	52.2%	37,661	31,366	69,027	54.6%

8710	Yass	N	11	2,881	4,007	6,888	41.8%	883	1,800	2,683	32.9%
8750	Young	N	11	4,539	2,122	6,661	68.1%	2,334	1,745	4,079	57.2%
<b>Total</b>											
<b>NSW</b>				<b>1,532,668</b>	<b>1,868,376</b>	<b>3,401,045</b>	<b>45.1%</b>	<b>1,272,237</b>	<b>1,492,603</b>	<b>2,764,840</b>	<b>46.0%</b>
<b>SMA</b>											
<b>ERA</b>				<b>822,019</b>	<b>871,739</b>	<b>1,693,758</b>	<b>48.5%</b>	<b>793,203</b>	<b>783,832</b>	<b>1,577,035</b>	<b>50.3%</b>
<b>RRA</b>				<b>312,062</b>	<b>408,557</b>	<b>720,619</b>	<b>43.3%</b>	<b>229,753</b>	<b>324,608</b>	<b>554,361</b>	<b>41.4%</b>
<b>Rest of the state</b>				<b>222,792</b>	<b>229,493</b>	<b>452,285</b>	<b>49.3%</b>	<b>150,083</b>	<b>159,007</b>	<b>309,090</b>	<b>48.6%</b>
				<b>175,796</b>	<b>358,587</b>	<b>534,383</b>	<b>32.9%</b>	<b>99,198</b>	<b>225,156</b>	<b>324,355</b>	<b>30.6%</b>

**Note:** NA – Not applicable

\* Substantial year to year variations in self reported disposal and resource recovery data are unexplained and have not been verified.

## Appendix 2: Total domestic and kerbside resource recovery rate 2009–10 (continued)

### Councils processing through AWT

ABS	Council name	Region	DLG Group	
<b>AMENDED</b>				
600	Bellingen Shire Council	R	11	Council assumed 49.7% of waste sent to AWT was recovered
1800	Camden Council	S	6	Council assumed 49.7% of waste sent to AWT was recovered
2850	Coffs Harbour City Council	R	4	Council assumed 46.8% of waste sent to AWT was recovered
5700	Fairfield City Council	S	3	Council assumed 49.7% of waste sent to AWT was recovered
6350	Holroyd City Council	S	3	Council assumed 55.0% of waste sent to AWT was recovered

**Note:** For councils using AWT as recovery rates for material sent to AWT are shown.

These rates are as nominally reported by councils and nominally reduced by OEI after discussion with the councils.  
They are not verified.

ABS	Council name	Region	DLG Group	
<b>REPORTED</b>				
750	Blacktown	S	3	Council assumed 46.8% of waste sent to AWT was recovered
1450	Camden	S	6	Council assumed 35.0% of waste sent to AWT was recovered
1500	Campbelltown City	S	7	Council assumed 33.0% of waste sent to AWT was recovered
3750	Port Macquarie-Hastings	R	4	Council assumed 11.6% of waste sent to AWT was recovered
3950	Holroyd City	S	3	Council assumed 52.0% of waste sent to AWT was recovered
4100	Hunters Hill	S	2	Council assumed 44.4% of waste sent to AWT was recovered
4900	Liverpool City	S	7	Council assumed 48.7% of waste sent to AWT was recovered
5950	North Sydney	S	2	Council assumed 34.0% of waste sent to AWT was recovered
6400	Port Stephens	E	4	Council assumed 50.3% of waste sent to AWT was recovered
7210	Sydney City	S	1	Council assumed 64.0% of waste sent to AWT was recovered
8250	Willoughby City	S	2	Council assumed 47.2% of waste sent to AWT was recovered
8350	Wingecarribee	E	4	Council assumed 60.0% of waste sent to AWT was recovered
8400	Wollondilly	R	6	Council assumed 17.6% of waste sent to AWT was recovered

**Note:** For councils using AWT as recovery rates for material sent to AWT are shown.

These rates are as nominally reported by councils, they are not verified.



## Appendix 3: Kerbside generation (household and population) 2009 –10

ABS	Council name	Region	DLG Group	Dry recycling			Garden organics			Residual waste		
				Tonnes collected	Per household kg/hh/wk	Per capita kg/ca/wk	Tonnes collected	Per household kg/hh/wk	Per capita kg/ca/wk	Tonnes collected	Per household kg/hh/wk	Per capita kg/ca/wk
60	Albury	N	4	4,878.70	4.54	1.86	3,376.00	8.57	1.29	10,701.78	9.97	4.07
110	Armidales Dumaresq	N	4	3,478.67	7.62	2.98	1,878.62	4.11	1.41	4,541.00	9.94	3.40
150	Ashfield	S	2	4,194.70	5.34	1.90	1,841.64	8.65	0.83	9,999.30	12.73	4.52
200	Auburn	S	2	3,585.84	3.13	0.93	3,837.57	6.14	0.96	18,571.71	15.77	4.67
250	Ballina	R	4	3,420.00	3.98	1.55	NS	-	-	12,076.42	14.07	5.47
300	Balranald	N	9	NS	-	-	NS	-	-	196.00	6.79	1.52
350	Bankstown	S	3	16,504.00	5.15	1.71	19,843.00	6.19	2.05	39,524.00	12.32	4.08
470	Bathurst	N	4	3,250.94	4.74	1.76	NS	-	-	10,024.48	13.21	4.90
500	Baulkham Hills	S	7	18,606.00	6.80	2.24	17,745.00	7.29	1.93	37,457.00	12.78	4.08
550	Bega Valley	N	4	6,377.74	9.43	4.18	3,150.00	5.55	1.81	13,976.00	18.10	8.03
600	Bellingen	R	11	1,214.82	6.11	1.89	1,337.64	6.73	1.92	3,538.21	17.79	5.09
650	Berrigan	N	10	1,754.00	12.03	5.04	NS	-	-	929.60	6.38	2.08
750	Blacktown	S	3	25,672.92	5.05	1.67	NS	-	-	89,802.00	17.66	5.76
800	Bland	N	10	NS	-	-	NS	-	-	3,087.00	33.50	9.27
850	Blayney	N	10	587.08	5.27	1.57	NS	-	-	2,155.00	19.35	5.77
900	Blue Mountains	R	7	9,036.62	5.40	2.23	NS	-	-	21,684.00	12.95	5.36
950	Bogan	N	9	NS	-	-	NS	-	-	500.00	10.53	3.20
1000	Bombala	N	9	405.28	9.68	5.11	NS	-	-	524.82	10.83	3.86
1050	Boorowa	N	9	42.00	1.16	0.43	NS	-	-	832.00	23.05	6.53
1100	Botany Bay	S	2	2,949.65	4.22	1.43	NS	-	-	9,822.26	14.05	4.76
1150	Bourke	N	9	NS	-	-	NS	-	-	737.00	13.32	4.62
1200	Brewarrina	N	9	NS	-	-	NS	-	-	300.00	15.81	3.02
1250	Broken Hill	N	4	NS	-	-	1,054.84	2.41	1.02	6,560.45	13.70	6.32
1300	Burwood	S	2	3,064.13	5.24	1.75	2,031.71	5.43	1.16	7,273.39	12.44	4.15
1350	Byron	R	4	4,731.00	7.39	2.98	NS	-	-	6,251.00	9.67	3.74

### Appendix 3: Kerbside generation (household and population) 2009–10 (continued)

ABS	Council name	Region	DLG Group	Dry recycling			Garden organics			Residual waste		
				Tonnes collected	Per household kg/hh/wk	Per capita kg/ca/wk	Tonnes collected	Per household kg/hh/wk	Per capita kg/ca/wk	Tonnes collected	Per household kg/hh/wk	Per capita kg/ca/wk
1400	Cabonne	N	11	724.67	5.75	1.96	NS	-	-	1,913.18	15.17	2.78
1450	Camden	S	6	6,659.46	7.44	2.32	5,993.72	8.08	2.09	11,461.81	12.81	3.99
1500	Campbelltown	S	7	15,087.00	5.83	1.91	15,776.22	6.09	1.99	33,720.64	13.02	4.26
1520	Canada Bay	S	2	8,752.00	5.25	2.21	4,603.00	2.76	1.16	15,450.00	9.27	3.91
1550	Canterbury	S	3	20,001.20	7.61	2.69	10,152.68	6.75	1.36	33,034.70	12.57	4.44
1600	Carrathool	N	9	NS	-	-	NS	-	-	263.70	6.82	1.71
1700	Central Darling	N	9	NS	-	-	NS	-	-	952.00	18.91	9.07
1720	Cessnock	E	4	4,196.69	4.31	1.59	NS	-	-	15,465.84	15.90	5.85
1730	Clarence Valley	R	4	3,853.81	3.60	1.45	4,972.82	6.13	1.84	12,885.00	11.86	4.76
1750	Cobar	N	10	NS	-	-	NS	-	-	1,330.00	15.28	4.95
1800	Coffs Harbour	R	4	8,547.90	6.05	2.43	10,366.00	7.38	2.78	8,496.80	6.02	2.28
1860	Conargo	N	8	NS	-	-	NS	-	-	NS	-	-
2000	Coolamon	N	9	284.00	3.64	2.03	NS	-	-	725.00	9.29	3.30
2060	Cooma-Monaro	N	10	637.20	4.14	1.81	NS	-	-	1,728.15	11.24	3.19
2150	Coonamble	N	9	30.00	2.87	1.09	NS	-	-	1,500.00	20.20	6.70
2200	Cootamundra	N	10	509.57	3.39	1.42	NS	-	-	1,949.24	12.97	4.87
2310	Corowa	N	11	1,094.00	4.70	1.80	NS	-	-	2,315.00	9.94	3.81
2350	Cowra	N	11	786.25	4.08	1.34	NS	-	-	3,292.64	17.83	4.89
2500	Deniliquin	N	4	NS	-	-	NS	-	-	2,252.00	15.40	5.63
2600	Dubbo	N	4	NS	-	-	NS	-	-	12,205.00	16.45	5.70
2700	Dungog	R	10	715.00	4.47	1.81	NS	-	-	1,078.00	6.72	2.40
2750	Eurobodalla	N	4	4,937.00	4.65	2.54	2,274.76	2.14	1.17	5,836.36	5.50	3.00
2850	Fairfield	S	3	11,473.00	3.74	1.13	NS	-	-	64,712.00	21.07	6.40
2900	Forbes	N	10	460.00	2.69	1.14	NS	-	-	3,387.00	19.74	6.68
2950	Gilgandra	N	9	618.05	10.80	3.81	NS	-	-	845.00	14.76	3.48
3020	Glen Innes Severn	N	6	1,290.09	8.11	3.63	NS	-	-	1,875.00	11.68	3.90

3050	Gloucester	R	9	494.49	4.93	1.91	NA	-	-	1,228.80	12.26	4.64
3100	Gosford	E	7	22,361.59	6.43	2.58	18,761.00	5.40	2.17	35,511.00	10.22	4.10
3310	Goulburn Mulwarree	N	4	3,771.40	7.71	2.56	1,315.00	2.69	0.89	5,157.00	10.55	3.50
3350	Greater Taree	R	4	6,900.46	6.56	2.75	2,674.88	3.25	1.06	10,076.00	9.53	3.99
3370	Greater Hume	N	11	750.00	5.59	1.92	NS	-	-	1,594.22	11.71	2.95
3400	Great Lakes	R	4	5,034.72	4.83	2.73	3,033.34	4.93	1.64	7,226.00	6.93	3.92
3450	Griffith City	N	4	1,755.65	4.66	1.40	NS	-	-	6,314.15	15.72	4.72
3500	Gundagai	N	9	400.00	9.16	2.72	NS	-	-	530.00	12.13	2.63
3550	Gunnedah	N	11	1,426.00	7.33	3.25	895.00	5.58	1.42	2,595.44	13.33	4.10
3650	Guyra	N	9	267.50	5.04	1.69	NS	-	-	827.00	15.58	3.52
3660	Gwydir	N	10	527.00	7.39	3.49	NS	-	-	1,581.75	22.19	5.65
3700	Harden	N	9	254.00	4.86	1.89	NS	-	-	721.00	13.78	3.83
3750	Port Macquarie - Hastings	R	4	14,739.68	10.33	4.62	10,464.00	7.34	2.68	11,454.70	8.03	2.93
3800	Hawkesbury	E	6	11,400.10	10.17	3.45	NS	-	-	19,724.00	17.59	5.97
3850	Hay	N	9	NS	-	-	NS	-	-	800.00	12.57	4.57
3950	Holroyd	S	3	8,042.80	4.70	1.54	NS	-	-	30,385.48	17.75	5.84
4000	Hornsby	S	7	17,835.00	6.23	2.22	17,421.00	6.46	2.07	30,328.00	10.60	3.60
4100	Hunters Hill	S	2	1,401.40	5.81	2.00	537.50	2.23	0.71	2,887.50	11.98	3.84
4150	Hurstville	S	3	8,440.20	5.39	2.04	7,331.29	6.44	1.77	21,573.54	13.78	5.21
4200	Inverell	N	11	1,800.44	9.09	3.89	NS	-	-	2,400.00	9.77	2.76
4250	Jerilderie	N	8	NS	-	-	NS	-	-	832.00	40.00	9.55
4300	Junee	N	10	NA	-	-	NS	-	-	716.64	7.99	2.19
4350	Kempsey	R	4	2,609.00	4.58	1.71	1,944.00	5.05	1.27	16,260.00	28.53	10.66
4400	Kiama	E	4	2,278.70	5.12	2.20	3,220.26	7.57	3.00	3,723.03	8.37	3.47
4450	Kogarah	S	2	7,303.30	6.72	2.43	4,784.82	4.41	1.58	11,770.36	10.84	3.89
4500	Ku-ring-gai	S	3	15,470.00	7.70	2.67	17,830.00	8.88	3.08	20,098.00	10.01	3.47
4550	Kyogle	R	10	NS	-	-	NS	-	-	2,158.37	19.40	4.23
4600	Lachlan	N	10	NS	-	-	480.00	7.69	1.34	2,100.00	13.30	5.88
4650	Lake Macquarie	E	5	17,858.00	5.24	1.76	NS	-	-	59,020.00	17.32	5.70
4700	Lane Cove	S	2	3,625.00	5.55	2.14	1,716.00	2.63	1.02	6,007.00	9.19	3.55

### Appendix 3: Kerbside generation (household and population) 2009–10 (continued)

ABS	Council name	Region	DLG Group	Dry recycling			Garden organics			Residual waste		
				Tonnes collected	Per household kg/hh/wk	Per capita kg/ca/wk	Tonnes collected	Per household kg/hh/wk	Per capita kg/ca/wk	Tonnes collected	Per household kg/hh/wk	Per capita kg/ca/wk
4750	Leeton	N	11	612.11	3.10	1.31	NS	-	-	2,578.00	13.06	4.16
4800	Leichhardt	S	2	7,306.00	5.75	2.58	1,433.46	1.13	0.51	10,686.65	8.41	3.77
4850	Lismore	R	4	4,698.40	6.27	1.98	4,560.32	8.28	1.92	10,267.97	13.70	4.33
4880	Lithgow	N	4	785.59	1.62	0.81	NA	-	-	3,663.00	7.55	3.36
4900	Liverpool	S	7	16,281.00	5.82	1.72	14,140.04	4.76	1.49	38,687.48	13.82	4.08
4920	Liverpool Plains	N	10	1,906.41	12.34	4.62	NS	-	-	2,500.00	16.18	6.05
4950	Lockhart	N	9	NS	-	-	NS	-	-	417.00	9.50	2.43
5050	Maitland	E	4	5,514.48	4.18	1.53	NS	-	-	21,430.84	16.25	5.96
5150	Manly	S	2	5,541.05	6.07	2.60	1,826.29	2.00	0.86	7,477.64	8.19	3.51
5200	Marrickville	S	3	9,331.00	5.67	2.29	3,341.00	3.84	0.82	16,184.00	9.84	3.98
5270	Mid-Western	N	4	2,581.02	6.98	3.73	NS	-	-	5,767.00	15.59	4.89
5300	Moree Plains	N	11	1,495.46	6.28	2.67	NS	-	-	2,889.65	12.13	3.86
5350	Mosman	S	2	3,773.90	5.82	2.52	902.54	1.39	0.60	5,971.00	9.21	3.99
5500	Murray	N	10	681.36	5.16	2.56	NS	-	-	1,546.00	11.72	4.11
5550	Murrumbidgee	N	9	65.25	1.95	0.69	NS	-	-	62.25	1.86	0.47
5650	Muswellbrook	R	11	1,759.97	6.55	2.06	2,090.00	7.78	2.45	2,825.34	10.52	3.31
5700	Nambucca	R	11	2,116.54	5.92	2.12	2,940.80	8.23	2.95	3,021.82	8.45	3.03
5750	Narrabri	N	11	1,871.00	9.67	3.34	NS	-	-	7,524.00	38.87	10.57
5800	Narrandera	N	10	NS	-	-	NS	-	-	1,650.00	14.87	5.07
5850	Narromine	N	10	NS	-	-	NS	-	-	1,146.00	12.40	3.23
5900	Newcastle	E	5	14,578.05	4.73	1.81	NA	-	-	46,016.00	14.93	5.72
5950	North Sydney	S	2	7,677.00	4.15	2.31	1,424.00	0.77	0.43	10,021.00	5.41	3.02
6110	Oberon	N	10	NS	-	-	NS	-	-	1,560.00	26.53	5.56
6150	Orange	N	4	3,682.03	4.73	2.02	NS	-	-	12,062.86	15.26	6.00
6180	Palerang	N	11	589.00	6.20	2.50	NS	-	-	942.00	9.92	1.26
6200	Parke	N	11	970.00	3.63	1.24	NS	-	-	3,000.00	11.23	3.83

6250	Parramatta	S	3	14,499.00	5.45	1.97	11,720.00	6.12	1.35	32,991.00	10.83	3.79
6350	Penrith	S	7	19,725.62	6.00	2.05	24,620.39	9.55	2.56	32,574.78	9.90	3.39
6370	Pittwater	S	2	8,991.00	8.16	3.03	2,646.00	2.40	0.87	10,559.00	9.58	3.45
6400	Port Stephens	E	4	6,721.94	4.49	1.94	NS	-	-	22,074.50	14.74	6.36
6470	Queanbeyan	N	4	2,673.28	3.38	1.31	1,836.00	2.81	0.87	8,037.00	10.17	3.80
6550	Randwick	S	3	14,324.48	4.95	2.09	5,729.00	4.78	0.84	26,648.32	9.21	3.89
6610	Richmond Valley	R	4	633.98	1.74	0.56	NS	-	-	4,774.10	13.13	4.00
6650	Rockdale	S	3	8,863.00	4.79	1.67	NS	-	-	29,009.00	15.68	5.46
6700	Ryde	S	3	10,866.13	5.47	1.99	8,605.95	4.33	1.58	21,800.00	10.98	3.99
6900	Shellharbour	E	4	7,037.79	5.82	2.04	6,972.84	5.76	2.00	12,455.50	10.29	3.58
6950	Shoalhaven	E	5	11,433.70	4.75	2.58	NS	-	-	21,802.00	9.06	4.38
7000	Singleton	R	4	2,079.47	5.07	1.98	NS	-	-	6,052.90	14.77	4.89
7050	Snowy River	N	10	396.81	2.83	1.62	NS	-	-	1,388.23	9.90	3.31
7100	Strathfield	S	2	2,977.07	4.41	1.57	2,202.17	6.79	1.16	7,367.00	10.92	3.88
7150	Sutherland	S	3	28,833.29	6.92	2.52	23,871.90	5.73	2.09	40,834.00	9.79	3.57
7210	Sydney	S	1	15,294.85	3.28	1.65	549.02	0.12	0.06	40,299.71	8.63	4.36
7310	Tamworth Regional	N	4	4,516.80	4.28	1.48	3,379.20	3.73	1.11	12,873.00	12.19	4.23
7350	Temora	N	10	70.00	0.68	0.31	NS	-	-	1,750.00	14.73	5.47
7400	Tenterfield	N	10	NS	-	-	NS	-	-	1,460.00	15.99	4.00
7450	Tumbarumba	N	9	364.00	6.55	2.29	NS	-	-	670.00	10.38	3.45
7510	Tumut	N	11	648.00	3.09	1.09	NS	-	-	3,400.00	16.20	5.74
7550	Tweed	R	5	9,768.12	5.74	2.35	3,611.00	6.29	0.78	20,210.37	11.91	4.37
7620	Upper Hunter	R	11	807.30	3.81	1.33	NS	-	-	3,902.00	18.40	5.34
7640	Upper Lachlan	N	10	485.00	4.94	1.68	NS	-	-	1,508.00	15.37	3.86
7650	Uralla	N	10	1,071.25	12.60	3.66	NS	-	-	1,422.00	15.08	4.38
7700	Urana Shire	N	8	NS	-	-	NS	-	-	270.00	7.76	4.09
7750	Wagga Wagga	N	4	5,944.60	5.20	1.82	NA	-	-	10,270.58	8.98	3.14
7800	Wakool	N	9	348.00	5.34	2.12	NS	-	-	730.00	11.20	3.17
7850	Walcha	N	9	94.00	2.38	1.27	NS	-	-	620.00	15.71	3.63
7900	Walgett	N	10	NS	-	-	NS	-	-	1,661.00	22.67	4.43
7950	Warren Shire	N	9	NS	-	-	NS	-	-	NA	-	-

### Appendix 3: Kerbside generation (household and population) 2009–10 (continued)

ABS	Council name	Region	DLG Group	Dry recycling			Garden organics			Residual waste		
				Tonnes collected	Per household kg/hh/wk	Per capita kg/ca/wk	Tonnes collected	Per household kg/hh/wk	Per capita kg/ca/wk	Tonnes collected	Per household kg/hh/wk	Per capita kg/ca/wk
8000	Warringham	S	3	18,249.60	6.60	2.63	13,156.00	4.76	1.76	26,398.52	9.54	3.52
8020	Warrumbungle	N	11	1,170.00	7.76	2.83	NS	-	-	2,100.00	13.93	3.91
8050	Waverley	S	2	7,350.59	4.58	2.07	1,892.10	1.18	0.53	13,702.41	8.53	3.86
8100	Weddin	N	9	224.02	3.99	1.53	NS	-	-	540.00	9.62	2.77
8150	Wellington	N	10	NS	-	-	NS	-	-	1,500.00	9.78	3.24
8200	Wentworth	N	10	NS	-	-	NS	-	-	500.00	3.53	1.35
8250	Willoughby	S	2	8,294.73	5.92	2.30	5,819.81	4.15	1.62	26,299.97	18.77	7.30
8350	Wingecarribee	E	4	5,107.00	5.47	2.12	NS	-	-	11,882.80	12.73	4.93
8400	Wollondilly	R	6	3,556.00	4.93	1.66	522.00	1.09	0.23	8,387.77	11.64	3.73
8450	Wollongong	E	5	17,673.00	4.34	1.68	22,474.00	5.56	2.15	38,639.00	9.57	3.69
8500	Woollahra	S	2	8,385.00	6.23	2.92	3,583.00	2.66	1.25	11,505.00	8.54	4.01
8550	Wyong	E	7	18,762.65	6.13	2.42	18,898.26	6.33	2.43	31,366.18	10.25	4.04
8710	Yass	N	11	882.80	5.20	1.61	NS	-	-	1,800.00	10.60	2.34
8750	Young	N	11	2,334.00	13.11	6.03	NS	-	-	1,745.00	9.78	2.61
<b>Total</b>				<b>726,431.90</b>	<b>5.53</b>	<b>2.01</b>	<b>397,390.40</b>	<b>5.02</b>	<b>1.62</b>	<b>1,641,017.60</b>	<b>12.13</b>	<b>4.43</b>
<b>NSW average</b>												
<b>Region</b>												
<b>SMA</b>												
<b>ERA</b>				415,231.91	5.55	1.99	258,907.82	4.80	1.52	902,895.17	11.98	4.34
<b>RRA</b>				144,923.69	5.37	2.06	70,326.36	5.80	2.24	339,110.69	12.57	4.83
<b>Rest of the state</b>				86,717.28	5.78	2.18	48,516.80	6.15	1.73	173,855.57	11.50	4.31
				79,559.02	5.48	1.84	19,639.42	3.79	1.20	225,156.17	12.66	4.33

**Note:**

NA – Not available/not reported

NS – No service

## Appendix 4: Predominant bin size and collection frequency 2009–10

ABS	Council Name	Region	DLG Group	Dry recycling		Garden organics		Residual waste	
				Predominant bin size	Frequency	Predominant bin size	Frequency	Predominant bin size	Frequency
60	Albury	N	4	240L MGB	Fortnightly	240L MGB	Fortnightly	140L MGB	Weekly
110	Armidales Dumaresq	N	4	55L MGB	Weekly	240L MGB	Fortnightly	140L MGB	Weekly
150	Ashfield	S	2	240L MGB	Fortnightly	240L MGB	Fortnightly	120L	Weekly
200	Auburn	S	2	240L MGB Split	Fortnightly	240L MGB	Fortnightly	120L	Weekly
250	Ballina	R	4	240L MGB	Fortnightly	No Service		240L MGB	Weekly
300	Bairnald	N	9	NA	NA	NA	NA	NA	NA
350	Bankstown	S	3	240L MGB	Fortnightly	240L MGB	Fortnightly	120L	Weekly
470	Bathurst	N	4	240L MGB	Fortnightly	No Service		240L MGB	Weekly
500	Baulkham Hills	S	7	240L MGB	Fortnightly	240L MGB	Fortnightly	140L	Weekly
550	Bega Valley	N	4	240L MGB	Fortnightly	No Service		140L MGB	Weekly
600	Bellingen	R	11	240L MGB	Fortnightly	240L MGB	Weekly	240L MGB	Fortnightly
650	Berrigan	N	10	240L MGB	Fortnightly	No Service		120L MGB	Weekly
750	Blacktown	S	3	240L MGB	Fortnightly	No Service		240L	Weekly
800	Bland	N	10	No Service		No Service		240L	Weekly
850	Blayney	N	10	240L MGB	Fortnightly	No Service		240L MGB	Weekly
900	Blue Mountains	R	7	140L MGB	Weekly	No Service		240L MGB	Weekly
950	Bogan	N	9	No Service		No Service		240L MGB	Weekly
1000	Bombala	N	9	Crate	Weekly	No Service		Others(Mixed)	Weekly
1050	Boorowa	N	9	140L MGB	Weekly	No Service		240L MGB	Weekly
1100	Botany Bay	S	2	Other(Crate/140L/240L MGB)	Weekly	Other (Mixed)	Weekly	240L	Weekly
1150	Bourke	N	9	No Service		No Service		240L MGB	Weekly
1200	Brewarrina	N	9	No Service		No Service		240L MGB	Weekly
1250	Broken Hill	N	4	No Service		240L MGB	Fortnightly	240L MGB	Weekly
1300	Burwood	S	2	240L MGB	Fortnightly	240L MGB	Fortnightly	120L	Weekly
1350	Byron	R	4	240L MGB	Fortnightly	No Service		Others(Mixed)	Weekly

## Appendix 4: Predominant bin size and collection frequency 2009 – 10 (continued)

ABS	Council Name	Region	DLG Group	Dry recycling		Garden organics		Residual waste	
				Predominant bin size	Frequency	Predominant bin size	Frequency	Predominant bin size	Frequency
1400	Cabonne	N	11	240L MGB	Fortnightly	No Service		240L MGB	Weekly
1450	Camden	S	6	240L MGB	Weekly	240L MGB	Weekly	120L	Weekly
1500	Campbelltown	S	7	240L MGB	Fortnightly	240L MGB	Fortnightly	140L	Weekly
1520	Canada Bay	S	2	240L MGB	Fortnightly	240L MGB	Fortnightly	120L	Weekly
1550	Canterbury	S	3	240L MGB	Fortnightly	240L MGB	Fortnightly	140L	Weekly
1600	Carrathool	N	9	No Service		No Service		240L MGB	Weekly
1700	Central Darling	N	9	No Service		No Service		240L MGB	Weekly
1720	Cessnock	E	4	240L MGB Split (P/C)	Fortnightly	No Service		240L	Weekly
1730	Clarence Valley	R	4	240L MGB Split (P/C)	Fortnightly	240L MGB	Fortnightly	240L MGB	Weekly
1750	Cobar	N	10	No Service		No Service		240L MGB	Weekly
1800	Coffs Harbour	R	4	240L MGB	Fortnightly	240L MGB	Weekly	240L MGB	Fortnightly
1860	Conargo	N	8	No Service		No Service		No Service	
2000	Coolamon	N	9	240L MGB	Fortnightly	No Service		140L MGB	Weekly
2060	Cooma-Monaro	N	10	Crate / 140L MGB	Fortnightly	No Service		240L MGB	Weekly
2150	Coonamble	N	9	120L MGB	Fortnightly	No Service		240L MGB	Weekly
2200	Cootamundra	N	10	240L MGB	Fortnightly	No Service		240L MGB	Weekly
2310	Corowa	N	11	240L MGB	Fortnightly	No Service		240L MGB	Weekly
2350	Cowra	N	11	55l / 80L MGB	Weekly	No Service		Others(Mixed)	Weekly
2500	Deniliquin	N	4	No Service		No Service		240L MGB	Weekly
2600	Dubbo	N	4	Bag	Fortnightly	No Service		240L MGB	Weekly
2700	Dungog	R	10	240L MGB	Fortnightly	No Service		240L MGB	Weekly
2750	Eurobodalla	N	4	240L MGB	Fortnightly	Other(Various)	On Call	80L MGB	Weekly
2850	Fairfield	S	3	240L MGB	Fortnightly	No Service		240L	Weekly
2900	Forbes	N	10	240L MGB	Fortnightly	No Service		240L MGB	Weekly
2950	Gilgandra	N	9	240L MGB	Fortnightly	No Service		240L MGB	Weekly
3020	Glen Innes Severn	N	6	240L MGB	Fortnightly	No Service		140L MGB	Weekly



3050	Gloucester	R	9	240L MGB	Fortnightly	240L MGB	Fortnightly	No Service	240L MGB	Weekly
3100	Gosford	E	7	240L MGB	Fortnightly	240L MGB	Fortnightly	240L MGB	120L	Weekly
3310	Goulburn Mulwarree	N	4	240L MGB	Fortnightly	240L MGB	Fortnightly	240L MGB	140L MGB	Weekly
3350	Greater Taree	R	4	240L MGB	Fortnightly	240L MGB	Fortnightly	No Service	240L MGB Split (W/R)	Weekly
3370	Greater Hume	N	11	240L MGB	Fortnightly	240L MGB	Fortnightly	No Service	240L MGB	Weekly
3400	Great Lakes	R	4	240L MGB Split (W/R)	Weekly	240L MGB Split (W/R)	Weekly	No Service	120L MGB	Weekly
3450	Griffith City	N	4	240L MGB	Fortnightly	240L MGB	Fortnightly	No Service	240L MGB	Weekly
3500	Gundagai	N	9	240L MGB	Fortnightly	240L MGB	Fortnightly	No Service	120L MGB	Weekly
3550	Gunnedah	N	11	120L MGB	Weekly	120L MGB	Weekly	240L MGB	140L MGB	Weekly
3650	Guyra	N	9	55L MGB	Weekly	55L MGB	Weekly	No Service	Others(Mixed)	Weekly
3660	Gwydir	N	10	240L MGB	Fortnightly	240L MGB	Fortnightly	No Service	240L MGB Split (W/R)	Weekly
3700	Harden	N	9	240L MGB	Fortnightly	240L MGB	Fortnightly	No Service	120L MGB	Weekly
3750	Port Macquarie-Hastings	R	4	240L MGB	Fortnightly	240L MGB	Fortnightly	240L MGB	120L MGB	Weekly
3800	Hawkesbury	E	6	240L MGB	Fortnightly	240L MGB	Fortnightly	No Service	240L	Weekly
3850	Hay	N	9	No Service		No Service		No Service	240L MGB	Weekly
3950	Holtroyd	S	3	240L MGB	Fortnightly	240L MGB	Fortnightly	No Service	240L	Weekly
4000	Hornsby	S	7	240L MGB	Fortnightly	240L MGB	Fortnightly	240L MGB	140L	Weekly
4100	Hunters Hill	S	2	Other (120L/240L MGB)	Fortnightly	Other (120L/240L MGB)	Fortnightly	Other(Various)	240L	Weekly
4150	Hurstville	S	3	240L MGB	Fortnightly	240L MGB	Fortnightly	240L MGB	120L	Weekly
4200	Inverell	N	11	240L MGB	Fortnightly	240L MGB	Fortnightly	No Service	240L MGB	Weekly
4250	Jerilderie	N	8	No Service		No Service		No Service	240L MGB	Weekly
4300	Junee	N	10	240L MGB	Fortnightly	240L MGB	Fortnightly	No Service	240L MGB	Weekly
4350	Kempsey	R	4	240L MGB	Fortnightly	240L MGB	Fortnightly	No Service	120L MGB	Weekly
4400	Kiama	E	4	240L MGB	Fortnightly	240L MGB	Fortnightly	No Service	Others(Mixed)	Mixed
4450	Kogarah	S	2	240L MGB	Fortnightly	240L MGB	Fortnightly	240L MGB	140L	Weekly
4500	Ku-ring-gai	S	3	240L MGB	Fortnightly	240L MGB	Fortnightly	Other(Various)	120L	Weekly
4550	Kyogle	R	10	No Service		No Service		No Service	240L MGB	Weekly
4600	Lachlan	N	10	No Service		No Service		240L MGB	Others(Mixed)	Mixed
4650	Lake Macquarie	E	5	240L MGB Split (P/C)	Fortnightly	240L MGB Split (P/C)	Fortnightly	No Service	240L	Weekly
4700	Lane Cove	S	2	120L	Fortnightly	120L	Fortnightly	Other(Various)	80L	Weekly
4750	Leeton	N	11	240L MGB	Fortnightly	240L MGB	Fortnightly	No Service	240L MGB	Weekly

## Appendix 4: Predominant bin size and collection frequency 2009–10 (continued)

ABS	Council Name	Region	DLG Group	Dry recycling		Garden organics		Residual waste	
				Predominant bin size	Frequency	Predominant bin size	Frequency	Predominant bin size	Frequency
4800	Leichhardt	S	2	Other (120L/Crate)	Weekly	Other (Various)	Fortnightly	120L	Weekly
4850	Lismore	R	4	240L MGB	Fortnightly	240L MGB	Weekly	140L MGB	Fortnightly
4880	Lithgow	N	4	Crate	Weekly	No Service		240L MGB	Weekly
4900	Liverpool	S	7	Crate	Fortnightly	No Service		240L	Weekly
4920	Liverpool Plains	N	10	Crate	Weekly	No Service		Others (Mixed)	Weekly
4950	Lockhart	N	9	No Service		No Service		240L MGB	Weekly
5050	Maitland	E	4	240L MGB Split (P/C)	Fortnightly	No Service		240L	Weekly
5150	Manly	S	2	2X120L MGB	Fortnightly	Other (Various)	Monthly	80L	Weekly
5200	Marrickville	S	3	240L MGB	Fortnightly	Other (Various)	Fortnightly	140L	Weekly
5270	Mid-Western	N	4	Crate	Mixed	No Service		240L MGB	Weekly
5300	Moree Plains	N	11	240L MGB	Fortnightly	No Service		140L MGB	Weekly
5350	Mosman	S	2	2X120L	Fortnightly	Other (Tied & Bundled/240L MGB)	Monthly	120L	Weekly
5500	Murray	N	10	NA	NA	NA	NA	NA	NA
5550	Murrumbidgee	N	9	No Service		No Service		240L MGB	Weekly
5650	Muswellbrook	R	11	240L MGB	Fortnightly	240L MGB	Fortnightly	140L MGB	Weekly
5700	Nambucca	R	11	240L MGB	Fortnightly	240L MGB	Weekly	240L MGB	Fortnightly
5750	Narrabri	N	11	240L MGB	Fortnightly	No Service		120L MGB	Weekly
5800	Narrandera	N	10	No Service		No Service		240L MGB	Weekly
5850	Narramine	N	10	Bag	Weekly	No Service		240L MGB	Weekly
5900	Newcastle	E	5	240L MGB	Fortnightly	Other (Various)	On Call	240L	Weekly
5950	North Sydney	S	2	Other (Crate/80L/120L)	Weekly	Other (Various)	Fortnightly	55L	Weekly
6110	Oberon	N	10	No Service		No Service		240L MGB	Weekly
6150	Orange	N	4	240L MGB	Fortnightly	No Service		240L MGB	Weekly
6180	Palerang	N	11	240L MGB	Fortnightly	No Service		140L MGB	Weekly
6200	Parke	N	11	240L MGB	Fortnightly	No Service		240L MGB	Weekly
6250	Parramatta	S	3	240L MGB	Fortnightly	240L MGB	Fortnightly	140L	Weekly

6350	Penrith	S	7	240L MGB	Fortnightly	No Service	240L	Weekly
6370	Pittwater	S	2	140L	Weekly	Other(Various)	80L	Weekly
6400	Port Stephens	E	4	240L MGB	Fortnightly	No Service	240L	Weekly
6470	Queanbeyan	N	4	240L MGB	Fortnightly	240L MGB	140L MGB	Weekly
6550	Randwick	S	3	240L MGB	Fortnightly	240L MGB	140L	Weekly
6610	Richmond Valley	R	4	No Service		No Service	240L MGB	Weekly
6650	Rockdale	S	3	240L MGB	Fortnightly	No Service	240L	Weekly
6700	Ryde	S	3	240L MGB	Fortnightly	240L MGB	140L	Weekly
6900	Shellharbour	E	4	240L MGB	Fortnightly	240L MGB	240L	Fortnightly
6950	Shoalhaven	E	5	240L MGB	Fortnightly	Other(Various)	120L	Weekly
7000	Singleton	R	4	240L MGB	Fortnightly	No Service	240L MGB	Weekly
7050	Snowy River	N	10	Crate	Mixed	No Service	240L MGB	Weekly
7100	Strathfield	S	2	240L MGB	Fortnightly	240L MGB	120L	Weekly
7150	Sutherland	S	3	240L MGB	Fortnightly	240L MGB	120L	Weekly
7210	Sydney	S	1	Crate	Weekly	Other(Tied & Bundle/120L/140L)	80L/120L	Weekly
7310	Tamworth Regional	N	4	Crate	Weekly	240L MGB	240L MGB	Weekly
7350	Temora	N	10	No Service		No Service	240L MGB	Weekly
7400	Tenterfield	N	10	No Service		No Service	Others(Mixed)	Weekly
7450	Tumbarumba	N	9	240L MGB	Fortnightly	No Service	140L MGB	Fortnightly
7510	Tumut	N	11	240L MGB	Fortnightly	No Service	120L MGB	Weekly
7550	Tweed	R	5	240L MGB Split (W/R)	Weekly	240L MGB	240L MGB Split (W/R)	Weekly
7620	Upper Hunter	R	11	240L MGB	Fortnightly	No Service	240L MGB	Mixed
7640	Upper Lachlan	N	10	240L MGB	Fortnightly	No Service	120L MGB	Weekly
7650	Uralla	N	10	Crate	Weekly	No Service	Others(Mixed)	Weekly
7700	Urana Shire	N	8	No Service		No Service	240L MGB	Weekly
7750	Wagga Wagga	N	4	240L MGB	Fortnightly	240L MGB	120L MGB	Weekly
7800	Wakool	N	9	240L MGB	Fortnightly	No Service	120L MGB	Weekly
7850	Walcha	N	9	Crate	Weekly	No Service	240L MGB	Weekly
7900	Walgett	N	10	No Service		No Service	240L MGB	Weekly
7950	Warren Shire	N	9	No Service		No Service	240L MGB	Weekly

## Appendix 4: Predominant bin size and collection frequency 2009–10 (continued)

ABS	Council Name	Region	DLG Group	Dry recycling		Garden organics		Residual waste	
				Predominant bin size	Frequency	Predominant bin size	Frequency	Predominant bin size	Frequency
8000	Warrigah	S	3	2X120L	Weekly	Other(Various)	Monthly	80L	Weekly
8020	Warrumbungle	N	11	Crate	Weekly	No Service		240L MGB	Weekly
8050	Waverley	S	2	Other (Crate/140L)	Weekly	Other(80L/140L/240L MGB)	Fortnightly	140L	Weekly
8100	Weddin	N	9	No Service		No Service		240L MGB	Weekly
8150	Wellington	N	10	No Service		No Service		240L MGB	Weekly
8200	Wentworth	N	10	No Service		No Service		240L MGB	Weekly
8250	Willoughby	S	2	240L MGB	Weekly	240L MGB	Weekly	140L	Weekly
8350	Wingecarribee	E	4	240L MGB	Fortnightly	Other(Various) NA	On Call	80L	Weekly
8400	Wollondilly	R	6	240L MGB	Fortnightly	240L MGB	Fortnightly	Others(Mixed)	Weekly
8450	Wollongong	E	5	240L MGB	Fortnightly	240L MGB	Fortnightly	120L	Weekly
8500	Woolahra	S	2	Other (Crate/120L)	Weekly	240L MGB	Weekly	120L	Weekly
8550	Wyong	E	7	240L MGB	Weekly	240L MGB	Fortnightly	140L	Weekly
8710	Yass	N	11	240L MGB	Fortnightly	No Service		140L MGB	Weekly
8750	Young	N	11	240L MGB	Weekly	No Service		140L MGB	Weekly

**Note:** NA – Not available/not reported

## Appendix 5: Domestic waste management charges 2009–10

ABS	Council name	Region	DLG Group	Domestic waste management charge SUDs			Overall \$
				Dry recycling \$	Garden organics \$	Residual waste \$	
60	Albury	N	4	-	50.00	115.45	165.45
110	Armidale Dumaresq	N	4	-	-	-	245.00
150	Ashfield	S	2	-	56.20	204.60	260.80
200	Auburn	S	2	-	-	-	-
250	Ballina	R	4	-	-	-	278.00
300	Balranald	N	9	-	-	254.00	254.00
350	Bankstown	S	3	-	-	300.00	300.00
470	Bathurst	N	4	62.00	-	136.00	198.00
500	Baulkham Hills	S	7	-	-	-	315.00
550	Bega Valley	N	4	95.18	47.55	180.63	323.36
600	Bellingen	R	11	-	-	405.00	405.00
650	Berrigan	N	10	-	-	221.50	221.50
750	Blacktown	S	3	52.00	-	206.00	258.00
800	Bland	N	10	-	-	230.00	225.00
850	Blayney	N	10	90.00	-	110.00	200.00
900	Blue Mountains	R	7	70.27	-	86.11	156.38
950	Bogan	N	9	-	-	145.00	145.00
1000	Bombala	N	9	95.00	-	112.00	207.00
1050	Boorowa	N	9	-	-	93.00	93.00
1100	Botany Bay	S	2	-	-	-	279.00
1150	Bourke	N	9	-	-	221.00	221.00
1200	Brewarrina	N	9	-	-	298.00	298.00
1250	Broken Hill	N	4	-	-	175.00	175.00
1300	Burwood	S	2	-	-	338.00	338.00
1350	Byron	R	4	-	-	-	211.00
1400	Cabonne	N	11	-	-	-	266.10
1450	Camden	S	6	-	-	-	-
1500	Campbelltown	S	7	-	-	-	218.40
1520	Canada Bay	S	2	68.73	37.74	170.99	301.00
1550	Canterbury	S	3	-	-	-	276.00
1600	Carrathool	N	9	-	-	99.00	99.00
1700	Central Darling	N	9	-	-	360.00	360.00
1720	Cessnock	E	4	-	-	-	362.50
1730	Clarence Valley	R	4	51.00	48.00	106.00	205.00
1750	Cobar	N	10	-	-	165.00	165.00

## Appendix 5: Domestic waste management charges 2009–10 (continued)

ABS	Council name	Region	DLG Group	Domestic waste management charge SUDs			Overall \$
				Dry recycling \$	Garden organics \$	Residual waste \$	
1800	Coffs Harbour	R	4	-	-	-	345.00
1860	Conargo	N	8	-	-	-	-
2000	Coolamon	N	9	55.00	-	170.00	225.00
2060	Cooma-Monaro	N	10	75.00	-	250.00	325.00
2150	Coonamble	N	9	-	-	-	260.00
2310	Corowa	N	11	-	-	210.00	210.00
2200	Cootamundra	N	10	-	-	260.00	260.00
2310	Corowa	N	11	-	-	220.00	220.00
2350	Cowra	N	11	88.00	-	391.00	479.00
2500	Deniliquin	N	4	-	-	263.00	263.00
2600	Dubbo	N	4	8.71	5.44	126.85	141.00
2700	Dungog	R	10	92.60	-	160.00	252.60
2750	Eurobodalla	N	4	-	-	236.40	236.40
2850	Fairfield	S	3	-	-	-	311.48
2900	Forbes	N	10	46.80	-	231.05	277.85
2950	Gilgandra	N	9	-	-	311.00	311.00
3020	Glen Innes Severn	N	6	39.00	-	78.70	117.70
3050	Gloucester	R	9	-	-	-	306.50
3100	Gosford	E	7	-	-	-	236.00
3310	Goulburn Mulwarree	N	4	-	-	-	226.00
3350	Greater Taree	R	4	-	-	319.00	319.00
3370	Greater Hume	N	11	65.00	-	130.00	170.00
3400	Great Lakes	R	4	103.33	103.33	103.34	310.00
3450	Griffith City	N	4	-	-	221.00	221.00
3500	Gundagai	N	9	93.00	-	200.00	293.00
3550	Gunnedah	N	11	102.00	42.00	108.00	252.00
3650	Guyra	N	9	-	-	-	-
3660	Gwydir	N	10	-	-	435.00	435.00
3700	Harden	N	9	-	-	318.50	318.50
3750	Port Macquarie-Hastings	R	4	-	-	-	363.00
3800	Hawkesbury	E	6	67.00	-	231.00	298.00
3850	Hay	N	9	-	-	185.00	185.00
3950	Holroyd	S	3	-	-	-	243.65
4000	Hornsby	S	7	48.00	37.00	179.00	264.00
4100	Hunters Hill	S	2	-	-	296.52	296.52
4150	Hurstville	S	3	71.19	68.09	170.22	309.50
4200	Inverell	N	11	-	-	246.00	246.00

ABS	Council name	Region	DLG Group	Domestic waste management charge SUDs			Overall \$
				Dry recycling \$	Garden organics \$	Residual waste \$	
4250	Jerilderie	N	8	-	-	155.00	155.00
4300	Junee	N	10	120.30	-	120.30	240.60
4350	Kempsey	R	4	75.00	94.00	144.00	313.00
4400	Kiama	E	4	-	-	-	310.81
4450	Kogarah	S	2	-	-	-	345.28
4500	Ku-ring-gai	S	3	-	-	320.00	320.00
4550	Kyogle	R	10	-	-	293.00	293.00
4600	Lachlan	N	10	-	-	171.00	171.00
4650	Lake Macquarie	E	5	-	-	-	301.17
4700	Lane Cove	S	2	-	-	345.00	345.00
4750	Leeton	N	11	106.60	-	210.60	317.20
4800	Leichhardt	S	2	61.55	23.82	218.88	304.25
4850	Lismore	R	4	-	-	-	223.00
4880	Lithgow	N	4	-	-	287.00	287.00
4900	Liverpool	S	7	-	-	-	270.00
4920	Liverpool Plains	N	10	-	-	346.00	346.00
4950	Lockhart	N	9	-	-	189.00	189.00
5050	Maitland	E	4	59.80	-	185.90	245.70
5150	Manly	S	2	-	-	410.00	410.00
5200	Marrickville	S	3	111.84	34.95	202.71	349.50
5270	Mid-Western	N	4	-	-	132.00	132.00
5300	Moree Plains	N	11	129.00	-	129.00	258.00
5350	Mosman	S	2	-	-	-	-
5500	Murray	N	10	-	-	-	184.69
5550	Murrumbidgee	N	9	-	-	117.40	117.40
5650	Muswellbrook	R	11	-	-	-	235.00
5700	Nambucca	R	11	59.11	54.63	36.42	150.16
5750	Narrabri	N	11	-	-	330.00	330.00
5800	Narrandera	N	10	-	-	212.68	212.68
5850	Narromine	N	10	30.00	-	285.00	315.00
5900	Newcastle	E	5	53.55	13.05	175.61	242.21
5950	North Sydney	S	2	-	-	-	224.00
6110	Oberon	N	10	-	-	141.00	141.00
6150	Orange	N	4	52.90	-	157.00	209.90
6180	Palerang	N	11	-	-	460.00	460.00
6200	Parkes	N	11	-	-	-	250.00
6250	Parramatta	S	3	75.90	75.90	109.60	261.40

## Appendix 5: Domestic waste management charges 2009–10 (continued)

ABS	Council name	Region	DLG Group	Domestic waste management charge SUDs			Overall \$
				Dry recycling \$	Garden organics \$	Residual waste \$	
6350	Penrith	S	7	33.25	97.98	113.77	245.00
6370	Pittwater	S	2	-	-	-	375.00
6400	Port Stephens	E	4	97.00	-	189.00	286.00
6470	Queanbeyan	N	4	57.00	57.00	121.00	235.00
6550	Randwick	S	3	-	-	-	201.80
6610	Richmond Valley	R	4	-	-	345.00	345.00
6650	Rockdale	S	3	-	-	-	309.00
6700	Ryde	S	3	37.00	37.00	237.00	311.00
6900	Shellharbour	E	4	60.00	70.00	259.00	389.00
6950	Shoalhaven	E	5	-	-	-	234.82
7000	Singleton	R	4	-	-	-	286.00
7050	Snowy River	N	10	-	-	429.00	429.00
7100	Strathfield	S	2	-	-	330.00	330.00
7150	Sutherland	S	3	57.54	41.10	175.36	274.00
7210	Sydney	S	1	-	-	-	323.00
7310	Tamworth Regional	N	4	-	-	-	243.00
7350	Temora	N	10	-	-	146.70	146.70
7400	Tenterfield	N	10	-	-	170.00	170.00
7450	Tumbarumba	N	9	-	-	370.00	370.00
7510	Tumut	N	11	-	-	268.00	268.00
7550	Tweed	R	5	60.30	50.00	99.20	209.50
7620	Upper Hunter	R	11	76.00	-	265.00	341.00
7640	Upper Lachlan	N	10	-	-	323.00	323.00
7650	Uralla	N	10	61.00	-	94.00	155.00
7700	Urana Shire	N	8	-	-	155.00	155.00
7750	Wagga Wagga	N	4	78.67	78.67	78.66	236.00
7800	Wakool	N	9	119.00	-	109.00	228.00
7850	Walcha	N	9	104.00	-	198.50	302.50
7900	Walgett	N	10	-	-	392.46	392.46
7950	Warren Shire	N	9	-	-	-	190.00
8000	Warringah	S	3	-	-	-	221.00
8020	Warrumbungle	N	11	-	-	263.80	263.80
8050	Waverley	S	2	135.91	67.95	135.91	339.77
8100	Weddin	N	9	69.00	-	137.00	206.00
8150	Wellington	N	10	-	-	-	-
8200	Wentworth	N	10	-	-	180.00	180.00
8250	Willoughby	S	2	-	-	-	348.00



ABS	Council name	Region	DLG Group	Domestic waste management charge SUDs			Overall \$
				Dry recycling \$	Garden organics \$	Residual waste \$	
8350	Wingecarribee	E	4	-	-	276.00	276.00
8400	Wollondilly	R	6	52.00	75.50	152.00	383.50
8450	Wollongong	E	5	-	-	-	-
8500	Woollahra	S	2	-	-	-	316.90
8550	Wyong	E	7	63.40	75.70	188.90	348.50
8710	Yass	N	11	-	-	-	301.00
8750	Young	N	11	52.94	-	209.94	262.88

**Note:** NA – Not Available/Not Reported

## Appendix 6: Total NSW and regional figures

Region	Total		
	Councils	Households	Population (ABS June 2009)
NSW	152	2,698,811	7,133,305
SMA (Sydney Metropolitan Area)	38	1,462,646	4,003,847
ERA (Extended Regulated Area)	13	526,419	1,351,516
RRA (Regional Regulated Area)	21	308,877	775,723
Rest of the state	80	400,869	1,002,219



