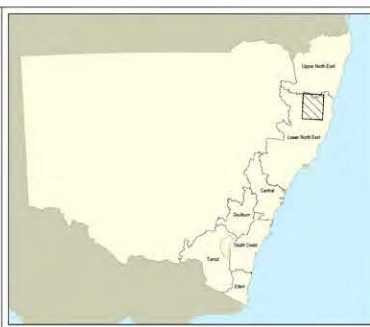
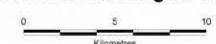


Legend

- ★ Town
- Major road
- River
- RFA region boundary
- Cadastral boundary
- ▨ Land to which the Integrated Forestry Operations Approval does not apply
- Reserve under the National Parks and Wildlife Act 1974
- State Forest



Map 1
Land to which the Integrated Forestry Operations Approval for the Lower North East Region does not apply



Scale - 1:100,000 when printed at A0
 Universal Transverse Mercator Projection - Zone 56
 Geocentric Datum of Australia 1994

NOTE: This map has been specifically prepared for the application of legislation to certain pieces of land. It does not show all land proposed, identified or declared as wilderness. Information on land affected by actions under the Wilderness Act is available from DECCW.

Map compiled from: NPWS and SF boundaries data from NSW NPWS and FNSW
 Administrative and Infrastructure data from NSW LPI

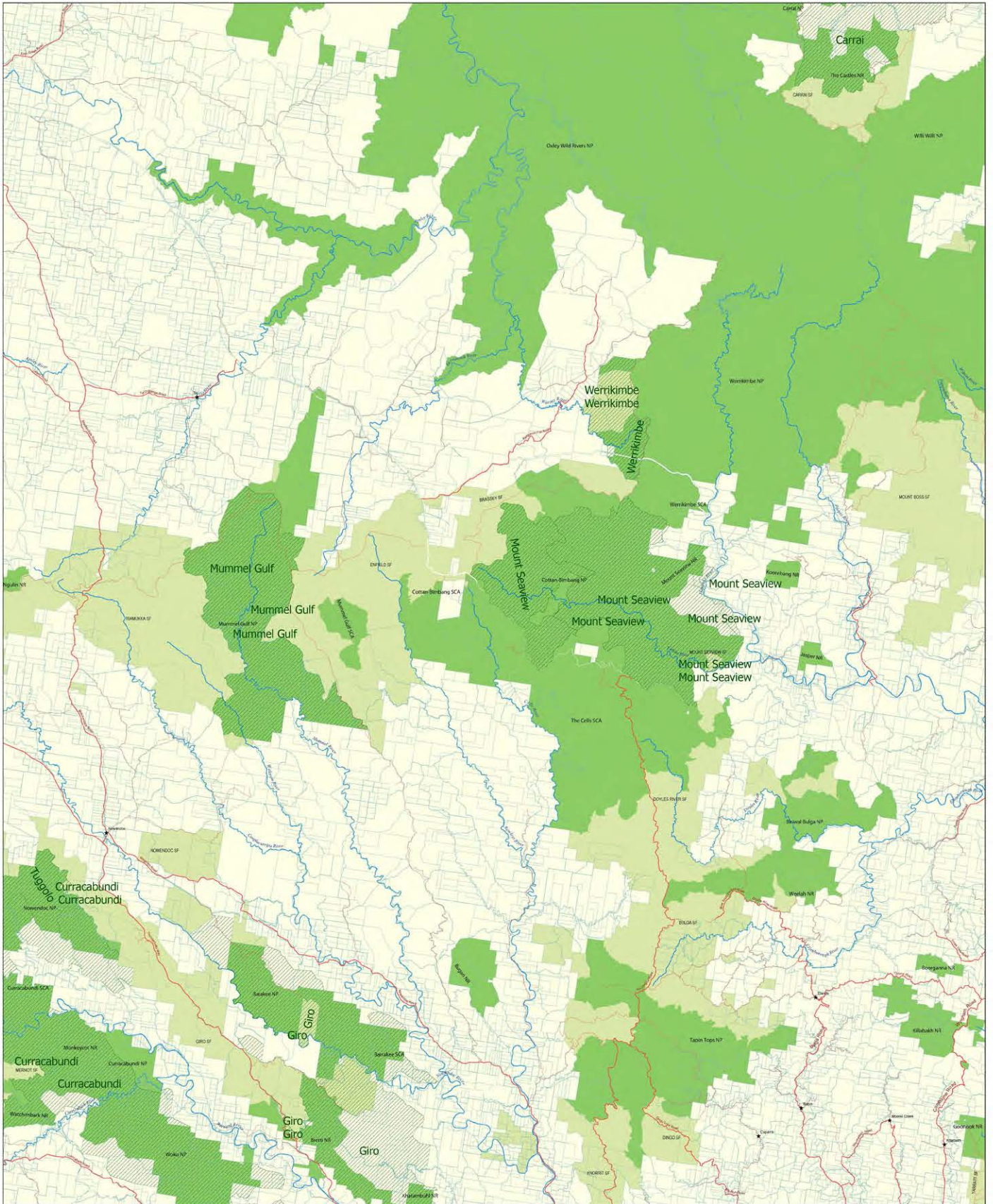
Copyright NSW Government, December 2010

This map is not guaranteed to be free from error or omission. Therefore, the State of NSW and its employees disclaim liability for any and all loss or damages made on the information on the map and any consequences of such loss or damages.



Produced
 December 2010



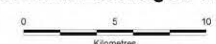


Legend

- ★ Town
- Major road
- River
- RFA region boundary
- Cadastral boundary
- Land to which the Integrated Forestry Operations Approval does not apply
- Reserve under the National Parks and Wildlife Act 1974
- State Forest



Map 2
Land to which the Integrated Forestry Operations Approval for the Lower North East Region does not apply



Scale - 1:100,000 when printed at A0
 Universal Transverse Mercator Projection - Zone 56
 Geocentric Datum of Australia 1994

NOTE: This map has been specifically prepared for the application of legislation to certain pieces of land. It does not show all land proposed, identified or declared as wilderness. Information on land affected by actions under the Wilderness Act is available from DECCW.

Map compiled from: NPWS and SF boundaries data from NSW NPWS and FNSW
 Administrative and Infrastructure data from NSW LPI

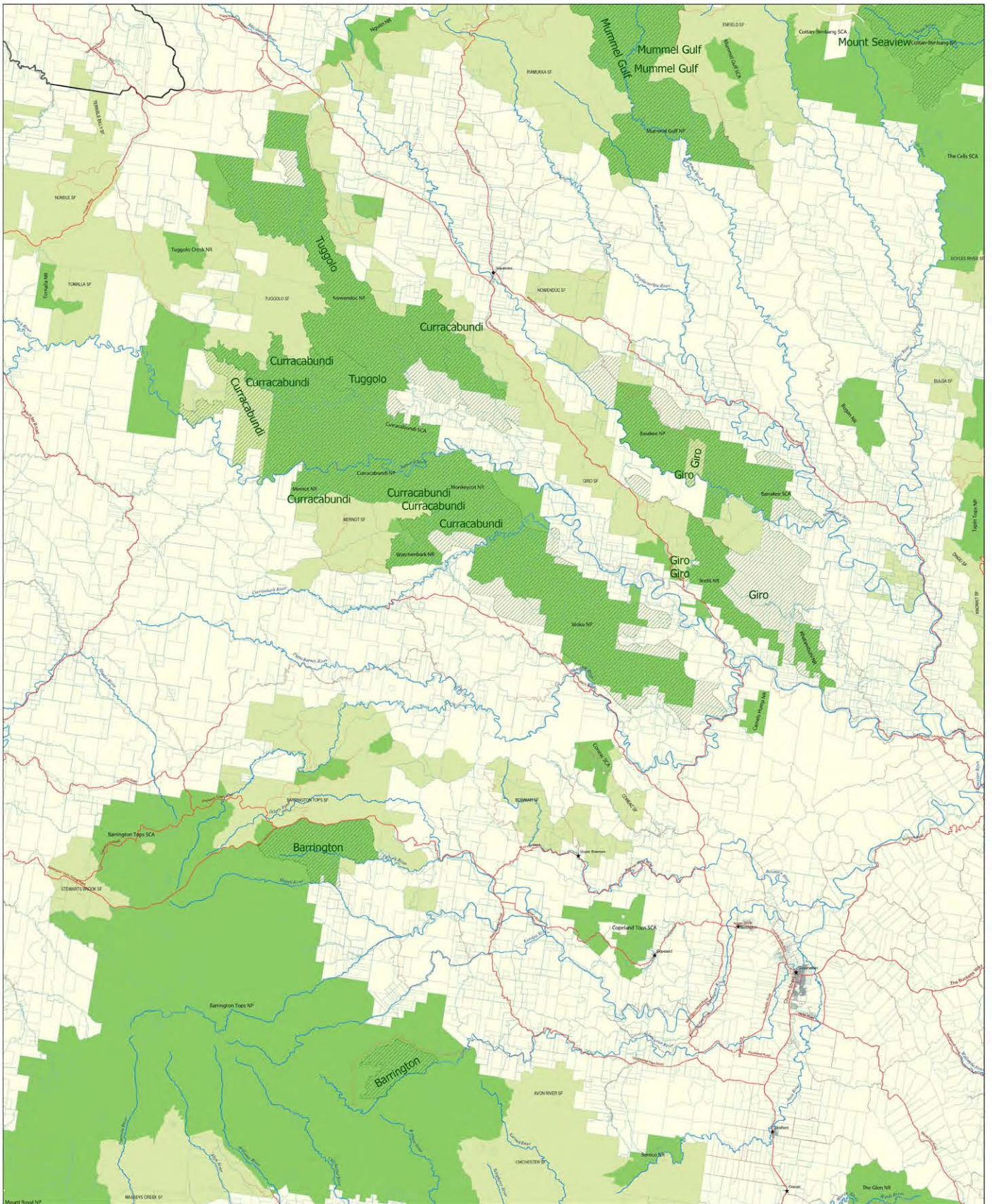
Copyright NSW Government, December 2010

This map is not guaranteed to be free from error or omission. Therefore, the State of NSW and its employees disclaim liability for any and all loss or damages made on the information on the map and any consequences of such loss or damages.



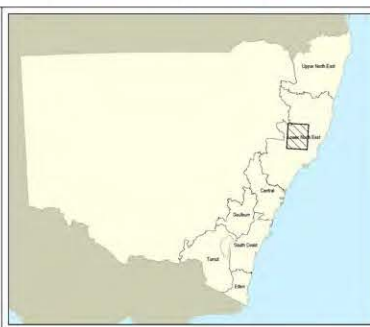
Produced
 December 2010



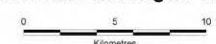


Legend

- ★ Town
- Major road
- River
- RFA region boundary
- Cadastral boundary
- ▨ Land to which the Integrated Forestry Operations Approval does not apply
- Reserve under the National Parks and Wildlife Act 1974
- State Forest



Map 3
Land to which the Integrated Forestry Operations Approval for the Lower North East Region does not apply



Scale - 1:100,000 when printed at A0
 Universal Transverse Mercator Projection - Zone 56
 Geocentric Datum of Australia 1994

NOTE: This map has been specifically prepared for the application of legislation to certain pieces of land. It does not show all land proposed, identified or allocated as wildlife refuge. Information on land affected by actions under the Wilderness Act is available from DECCW.

Map compiled from: NPWS and SF boundaries data from NSW NPWS and FNSW
 Administrative and Infrastructure data from NSW LPI

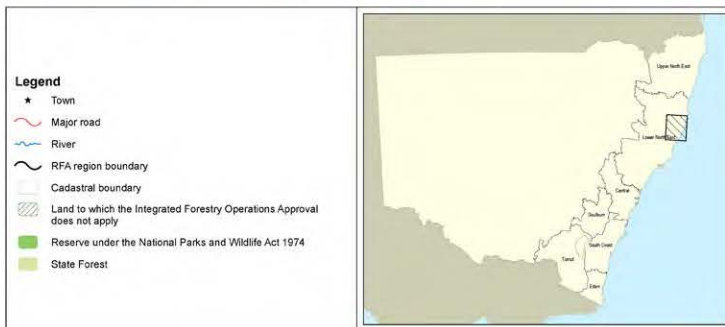
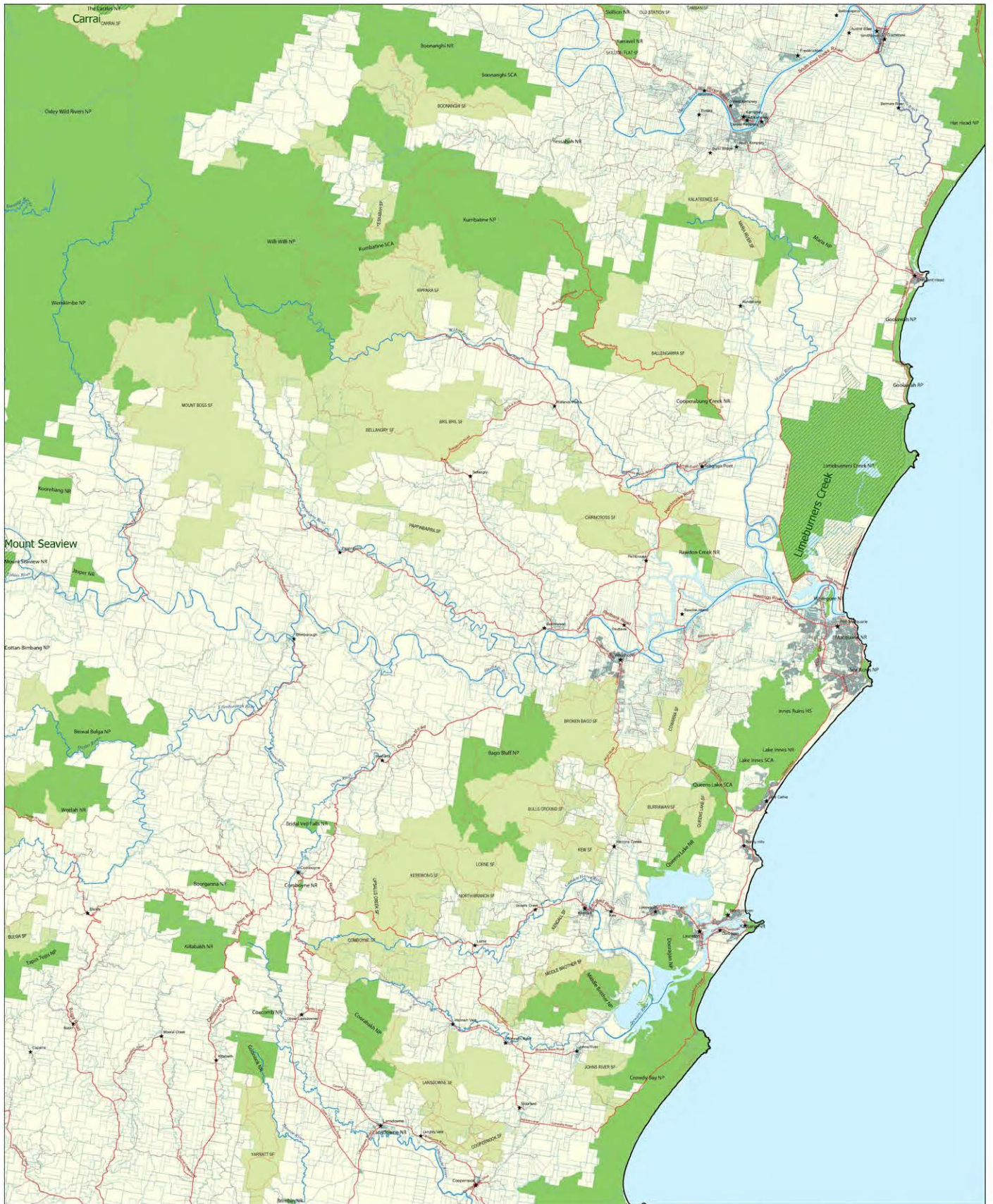
Copyright NSW Government, December 2010

This map is not guaranteed to be free from error or omission. Therefore, the State of NSW and its employees disclaim liability for any and all loss or damages made in reliance on the map and any consequences of such loss or damages.



Produced
 December 2010





Map 4 Land to which the Integrated Forestry Operations Approval for the Lower North East Region does not apply

0 5 10
Kilometres

Scale - 1:100,000 when printed at A0

Universal Transverse Mercator Projection - Zone 56
Geocentric Datum of Australia 1994

NOTE: This map has been specifically prepared for the application of legislation to certain pieces of land. It does not show all land proposed, identified or discovered as wilderness. Information on land affected by actions under the Wilderness Act is available from DECCW.

Map compiled from: NPWS and SF boundaries data from NSW NPWS and FNSW
Administrative and Infrastructure data from NSW LPI

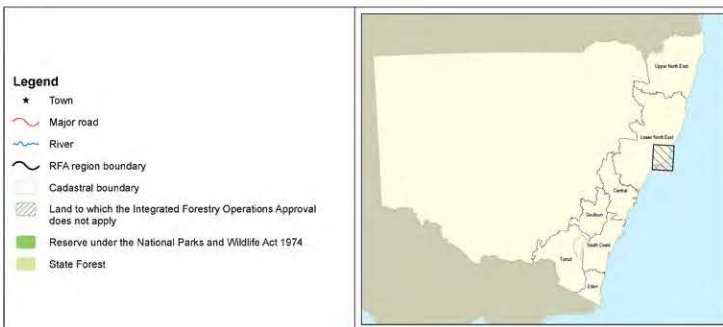
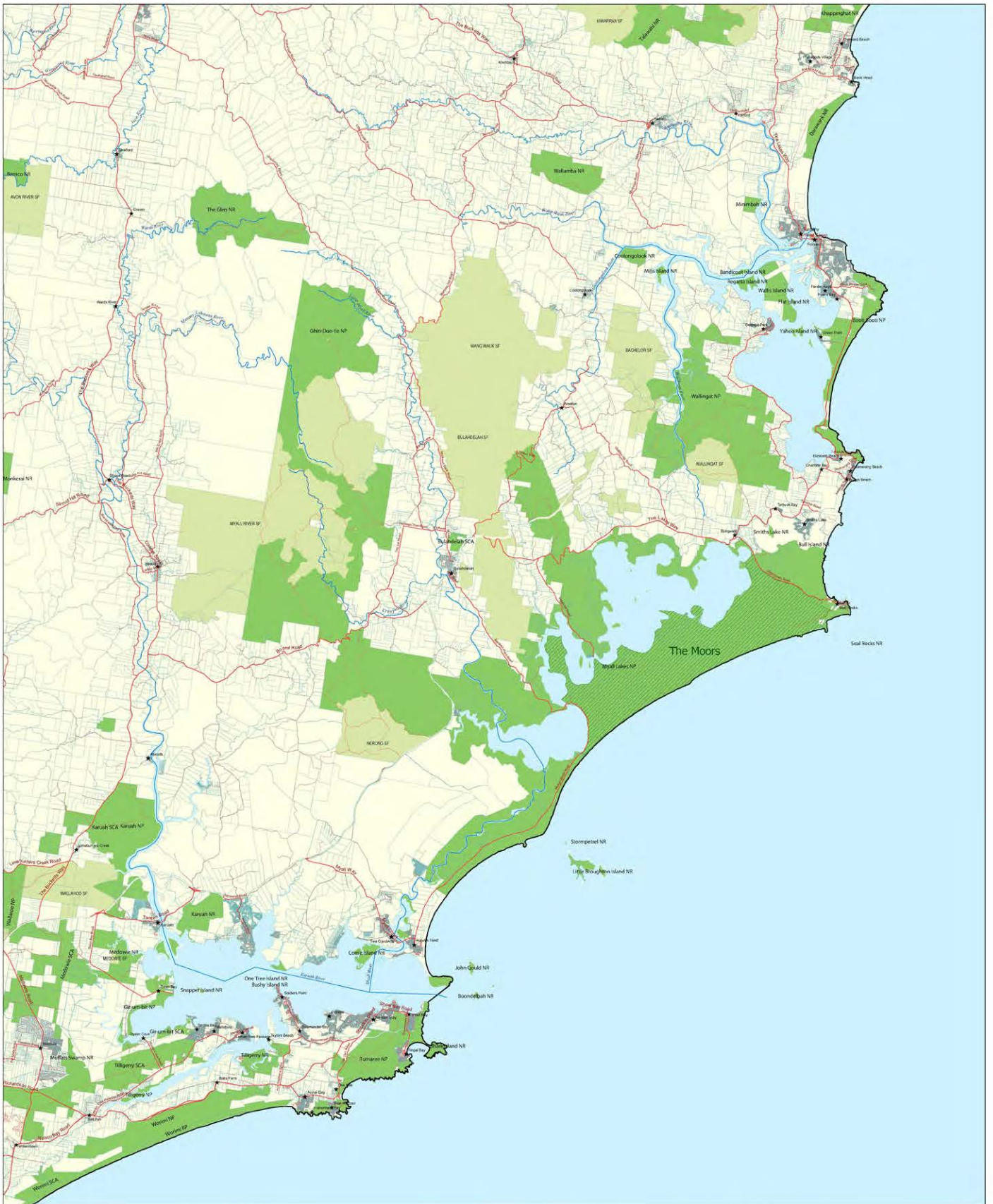
Copyright NSW Government, December 2010

This map is not guaranteed to be free from error or omission. Therefore, the State of NSW and its employees disclaim liability for any and all loss or damages made in reliance on the information on this map and any consequences of such loss or damages.



Produced
December 2010





Map 5
Land to which the Integrated Forestry Operations Approval
for the Lower North East Region does not apply

0 5 10
 Kilometres

Scale - 1:100,000 when printed at A0

Universal Transverse Mercator Projection - Zone 56
 Geocentric Datum of Australia 1994

NOTE: This map has been specifically prepared for the application of legislation to certain pieces of land.
 It does not assume all land proposed, identified or described as wilderness.
 Information on land affected by actions under the Wilderness Act is available from DECCW

Map compiled from: NPWS and SF boundaries data from NSW NPWS and FNSW
 Administrative and Infrastructure data from NSW LPI

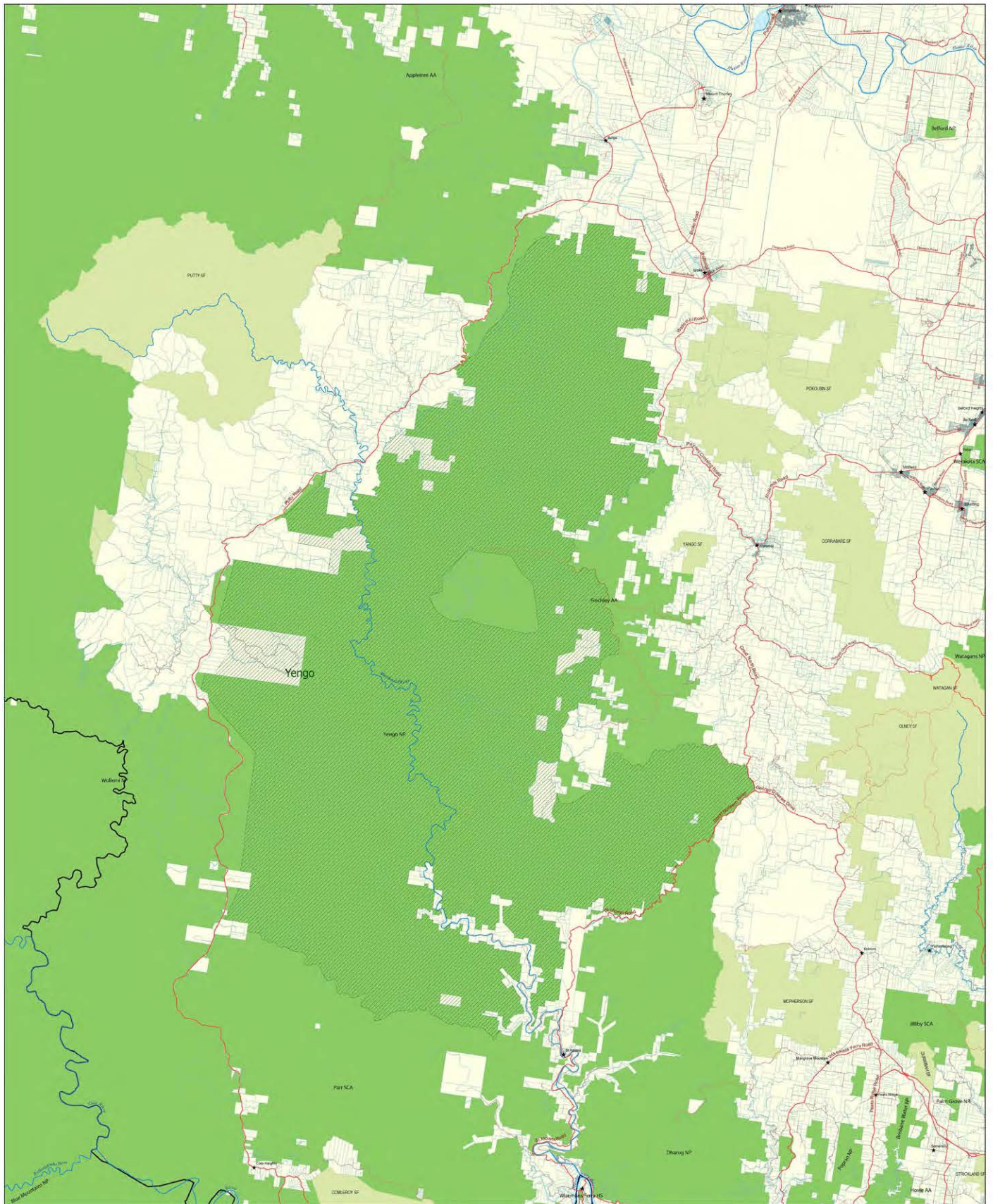
Copyright NSW Government, December 2010

This map is not guaranteed to be free from error or omission. Therefore, the State of NSW and its employees disclaim liability for any and all loss or damages made in the information on the map and any consequences of such loss or damages.



Produced
 December 2010





Legend

- ★ Town
- Major road
- River
- RFA region boundary
- Cadastral boundary
- ▨ Land to which the Integrated Forestry Operations Approval does not apply
- Reserve under the National Parks and Wildlife Act 1974
- State Forest



Map 6
Land to which the Integrated Forestry Operations Approval for the Lower North East Region does not apply

0 5 10
 Kilometres

Scale - 1:100,000 when printed at A0

Universal Transverse Mercator Projection - Zone 56
 Geocentric Datum of Australia 1994

NOTE: This map has been specifically prepared for the application of legislation to certain pieces of land. It does not show all land proposed, identified or reserved as wilderness. Information on land affected by actions under the Wilderness Act is available from DECCW.

Map compiled from: NPWS and SF boundaries data from NSW NPWS and FNSW
 Administrative and Infrastructure data from NSW LPI

Copyright NSW Government, December 2010

This map is not guaranteed to be free from error or omission. Therefore, the State of NSW and its employees disclaim liability for any and all loss or damages made on the information on the map and any consequences of such loss or damages.

Produced
 December 2010