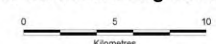


Legend

- ★ Town
- Major road
- River
- RFA region boundary
- Cadastral boundary
- Land to which the Integrated Forestry Operations Approval does not apply
- Reserve under the National Parks and Wildlife Act 1974
- State Forest



Map 1
Land to which the Integrated Forestry Operations Approval for the Upper North East Region does not apply



Scale - 1:100,000 when printed at A0
 Universal Transverse Mercator Projection - Zone 56
 Geocentric Datum of Australia 1994

NOTE: This map has been specifically prepared for the application of legislation to certain parcels of land. It does not show all land parcels. Identified or identified as well as information on land affected by actions under the Wilderness Act is available from DECCW.

Map compiled from: NPWS and SF boundaries data from NSW NPWS and FNSW Administrative and Infrastructure data from NSW LPI

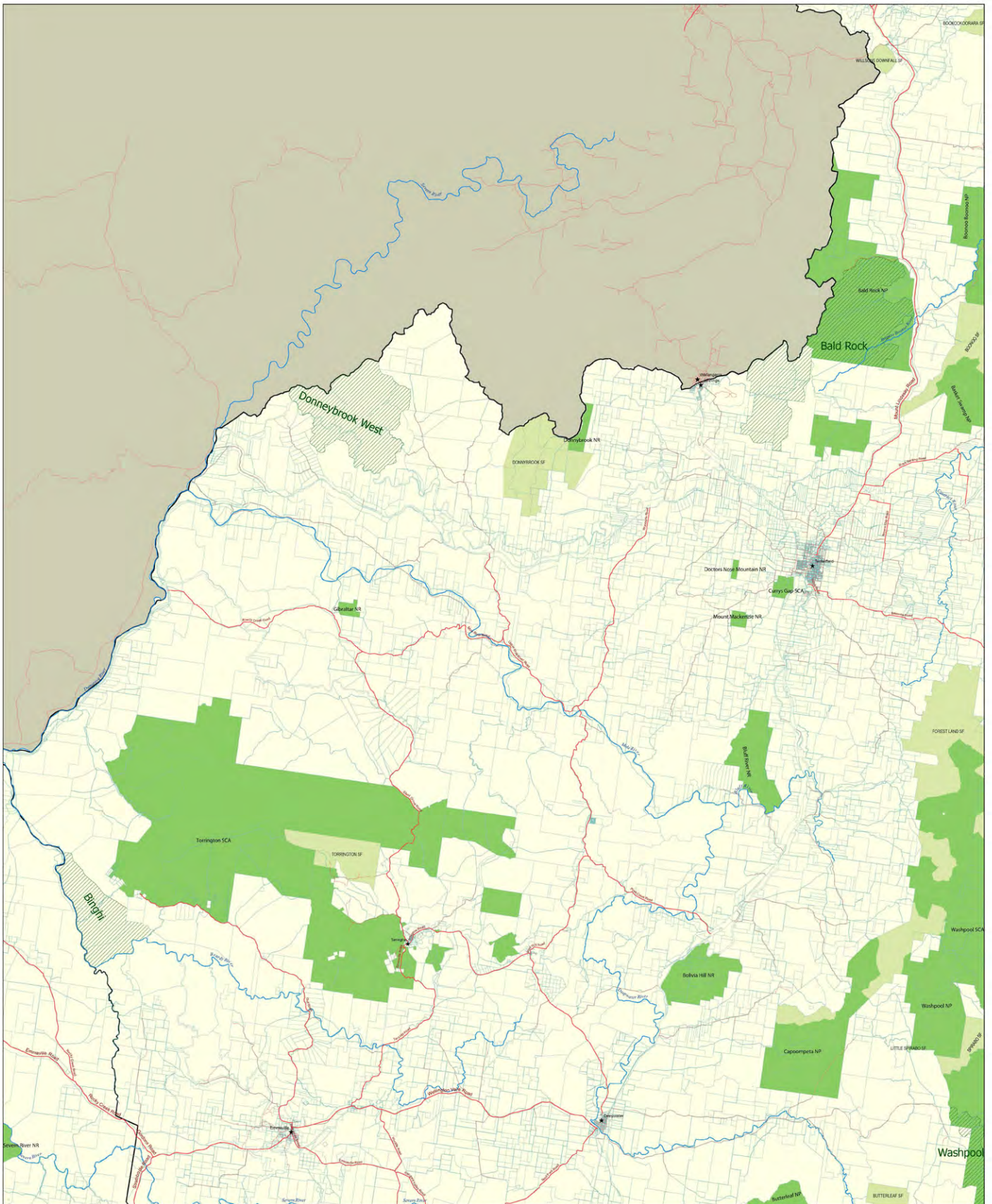
Copyright NSW Government, December 2010

This map is not guaranteed to be free from error or omission. Therefore, the State of NSW and its employees disclaim liability for any act done or omission made on the information in the map and any consequences of such act or omission.



Produced
 December 2010



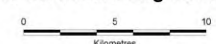


Legend

- ★ Town
- Major road
- River
- RFA region boundary
- Cadastral boundary
- ▨ Land to which the Integrated Forestry Operations Approval does not apply
- Reserve under the National Parks and Wildlife Act 1974
- State Forest



Map 2
Land to which the Integrated Forestry Operations Approval for the Upper North East Region does not apply



Scale - 1:100,000 when printed at A0
 Universal Transverse Mercator Projection - Zone 56
 Geocentric Datum of Australia 1994

NOTE: This map has been specifically prepared for the application of registration to certain pieces of land. It does not show all land proposed, identified or described as such in any information on land affected by actions under the Wilderness Act as available from DECCW.

Map compiled from: NPWS and SF boundaries data from NSW NPWS and FNSW Administrative and Infrastructure data from NSW LPI

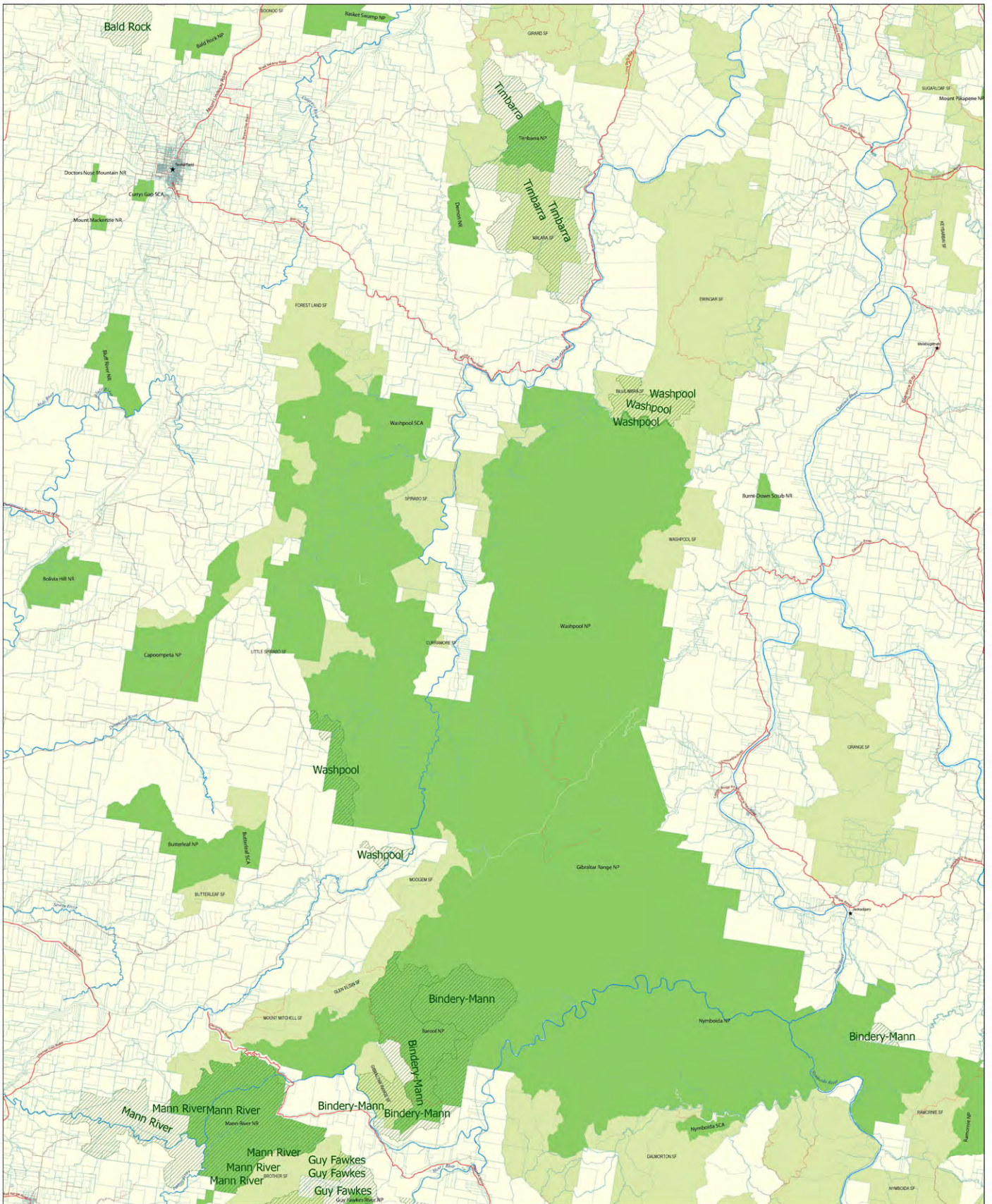
Copyright NSW Government, December 2010

This map is not guaranteed to be free from error or omission. Therefore, the State of NSW and its employees disclaim liability for any act done or omission made in reliance on the map and any consequences of such act or omission.



Produced
 December 2010



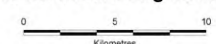


Legend

- ★ Town
- Major road
- River
- RFA region boundary
- Cadastral boundary
- Land to which the Integrated Forestry Operations Approval does not apply
- Reserve under the National Parks and Wildlife Act 1974
- State Forest



Map 3
Land to which the Integrated Forestry Operations Approval for the Upper North East Region does not apply



Scale - 1:100,000 when printed at A0

Universal Transverse Mercator Projection - Zone 56
 Geocentric Datum of Australia 1994

NOTE: This map has been specifically prepared for the application of legislation to certain pieces of land. It does not show all land proposed, identified or declared as wildlife-free. Information on land affected by actions under the Wildlife Act is available from DECCW.

Map compiled from: NPWS and SF boundaries data from NSW NPWS and FNSW Administrative and Infrastructure data from NSW LPI

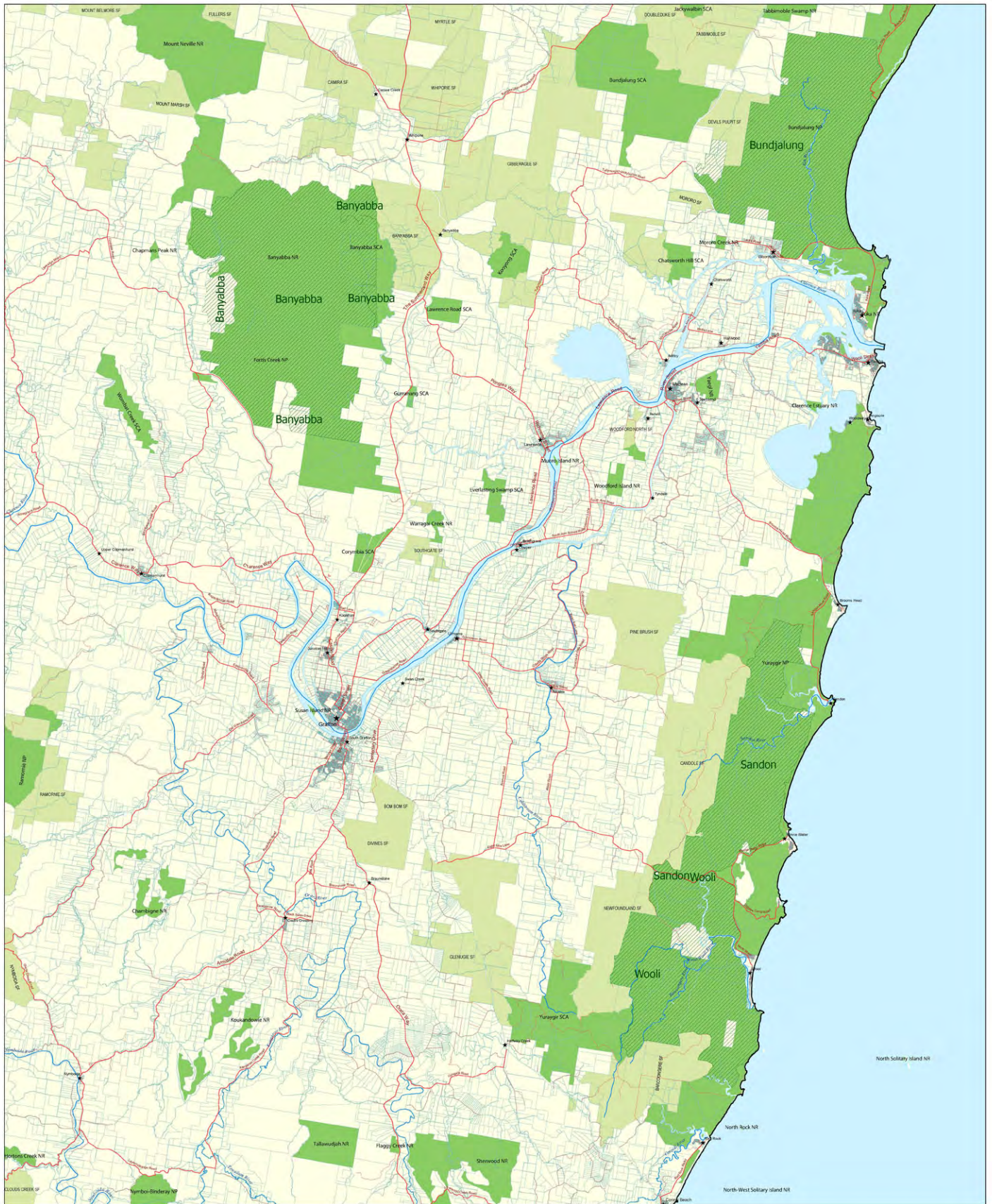
Copyright NSW Government, December 2010

This map is not guaranteed to be free from error or omission. Therefore, the State of NSW and its employees disclaim liability for any act done or omission made on the information in the map and any consequences of such act or omission.



Produced
 December 2010



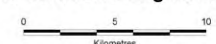


Legend

- ★ Town
- Major road
- River
- RFA region boundary
- Cadastral boundary
- ▨ Land to which the Integrated Forestry Operations Approval does not apply
- Reserve under the National Parks and Wildlife Act 1974
- State Forest



Map 4
Land to which the Integrated Forestry Operations Approval for the Upper North East Region does not apply



Scale - 1:100,000 when printed at A0
 Universal Transverse Mercator Projection - Zone 56
 Geocentric Datum of Australia 1994

NOTE: This map has been specifically prepared for the application of legislation to certain pieces of land. It does not show all land proposed, identified or described as land reserves. Information on land affected by actions under the Wilderness Act is available from DECCW.

Map compiled from: NPWS and SF boundaries data from NSW NPWS and FNSW Administrative and Infrastructure data from NSW LPI

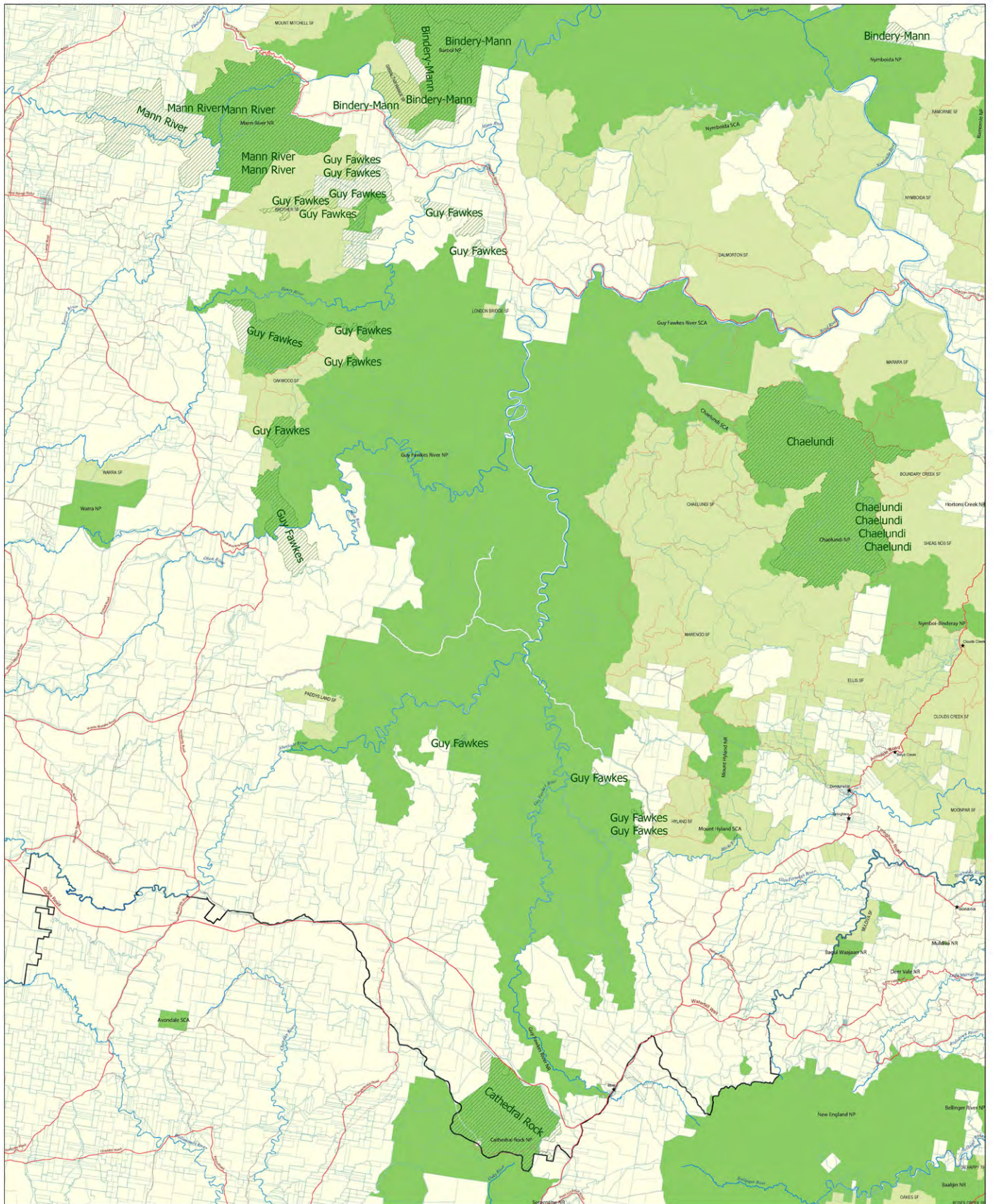
Copyright NSW Government, December 2010

This map is not guaranteed to be free from error or omission. Therefore, the State of NSW and its employees disclaim liability for any act done or omission made in reliance on the map and any consequences of such act or omission.



Produced
 December 2010



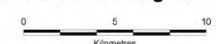


Legend

- ★ Town
- Major road
- River
- RFA region boundary
- Cadastral boundary
- Land to which the Integrated Forestry Operations Approval does not apply
- Reserve under the National Parks and Wildlife Act 1974
- State Forest



Map 5
Land to which the Integrated Forestry Operations Approval for the Upper North East Region does not apply



Scale - 1:100,000 when printed at A0

Universal Transverse Mercator Projection - Zone 56
 Geocentric Datum of Australia 1994

NOTE: This map has been specifically prepared for the application of legislation to certain parcels of land. It does not show all land proposed, identified or described as under-reserve. Information on land affected by actions under the Wilderness Act is available from DECCW.

Map compiled from: NPWS and SF boundaries data from NSW NPWS and FNSW
 Administrative and Infrastructure data from NSW LPI

Copyright NSW Government, December 2010

This map is not guaranteed to be free from error or omission. Therefore, the State of NSW and its employees disclaim liability for any act done or omission made on the information in the map and any consequences of such act or omission.



Produced
 December 2010

